

**KC53/61/65 Statistical Report – Adroddiad Ystadegol
2004/05**

Prepared by Cervical Screening Wales

CERVICAL SCREENING WALES

STATISTICAL REPORT

CERVICAL SCREENING PROGRAMME, WALES: 2004/2005

For more information about this report contact:

Helen Beer,
Information Analyst / Manager,
Screening Services,
18 Cathedral Road,
Cardiff,
CF11 9LJ

Tel: (029) 2078 7820
WHTN: 1896 7820 or 7858
Fax: (029) 2078 7900
Email: helen.beer@velindre-tr.wales.nhs.uk

July 2005

CONTENTS

Introduction and Commentary	4
KC53: Cervical Cytology	
Table 1 Test status of women and coverage, by age at test	6
Figure 1a: Screening coverage of all age groups.....	6
Figure 1b: Screening coverage of target age group (20-64 years), 1989/90 – 2004/2005	6
Table 2: Test status and coverage of target age group (20-64 years), by Local Health Board.....	7
Figure 2: Percentage of target age group screened within the last 3 and 5 years, by Local Health Board	7
Tables 3a/b: Women invited, by type of invitation and age (numbers and percentages).....	8
Figure 3a: Percentage of invitations, by type of invitation and age	9
Figure 3b: Percentage of invitations, where repeat advised in less than 3 years, by reason and age	9
Tables 4a/b: Women aged 20-64 invited in the year, by type of invitation and Local Health Board (numbers and percentages).....	10
Figure 4a: Percentage of women aged 20-64 invited in the year, by type of invitation and Local Health Board	11
Figure 4b: Percentage of invitations to women aged 20-64, where repeat advised in less than 3 years, by reason and Local Health Board.....	11
Tables 5a/b: Women tested, by type of invitation and age (numbers and percentages).....	12
Figure 5a: Percentage of women tested, by type of invitation and age.....	13
Figure 5b: Percentage of women tested, where repeat advised in less than 3 years, by reason and age	13
Table 6: Women tested, by Local Health Board	14
Figure 6: Number of women tested, all ages and target age group, by Local Health Board...	14
Tables 7a/b: Women aged 20-64 tested, by type of invitation and Local Health Board (numbers and percentages).....	15
Figure 7a: Percentage of women aged 20-64 tested, by type of invitation and Local Health Board.....	16
Figure 7b: Percentage of women aged 20-64 tested, where repeat advised in less than 3 years, by reason and Local Health Board	16
Tables 8a/b: Test results, by age (numbers and percentages).....	17
Figure 8: Low grade and high grade results as a percentage of adequate test results, by age.	17
Tables 9a/b: Test results of target age group (20-64 years), by Local Health Board (numbers and percentages).....	18
Figure 9: Low grade and high grade results of target age group (20-64 years), as a percentage of adequate test results, by Local Health Board.....	19

KC61: Pathology laboratories – Cervical cytology and biopsies

Table 10:	Number of smears examined, by pathology laboratory and source of smear	20
Figure 10a:	Percentage of inadequate smears, by laboratory	22
Figure 10b:	Percentage of high grade smears, by laboratory	22
Figure 10c:	Percentage of inadequate and high grade smears, by source of smear	22
Tables 11a/b:	Result of test, by laboratory (numbers and percentages)	23
Figure 11a:	Result of test, by laboratory	24
Figure 11b:	Low grade and high grade results as a percentage of adequate smears, by laboratory	24
Tables 12a/b:	Adequate smears examined, by result of test and age (numbers and percentages)..	25
Figure 12a:	Abnormal smears, by age and result	25
Figure 12b:	Positive results, by age and result	25
Table 13a:	Inadequate smears, by age and laboratory	26
Table 13b:	Inadequate smears as a percentage of total smears, by age and laboratory	26
Figure 13:	Inadequate smears as a percentage of total smears, by age	26
Tables 14a/b:	Outcome for women recommended for gynaecological referral following smear results: inadequate, borderline or mild dyskaryosis.....	27
Figure 14a:	Outcome of referral – following smear results of inadequate, borderline or mild dyskaryosis.....	27
Tables 14c/d:	Outcome for women recommended for gynaecological referral following smear results: moderate dyskaryosis or worse	28
Figure 14b:	Outcome of referral – following smear results of moderate dyskaryosis or worse .	28
Figure 14c:	Results of tests on women recommended for gynaecological referral	29
Table 15:	Positive Predictive Value (PPV) for high grade referral smears, by laboratory	29
Figure 15:	Positive Predictive Value (PPV) for high grade referral smears, by laboratory	29

KC65: Colposcopy Clinics

Tables 16a/b:	New patients seen, by referral smear result and colposcopy clinic (numbers and percentages)	30
Figure 16:	Percentage of new patients seen, by referral smear result and colposcopy clinic....	30
Table 17:	Time from receipt of referral to first offered appointment, by colposcopy clinic (excluding patient instigated delays)	31
Figure 17a:	Percentage of all new referrals offered an appointment within 8 weeks, by colposcopy clinic (excluding patient instigated delays)	31
Figure 17b:	Percentage of all new referrals with moderate dyskaryosis or worse smears offered an appointment within 4 weeks, by colposcopy clinic (excluding patient instigated delays).....	31
Tables 18a/b:	Attended visits, by type of visit and colposcopy clinic (numbers and percentages)	32
Figure 18:	Percentage of attended visits, by type of visit and colposcopy clinic.....	32

Tables 19a/b: New patients seen, by result of referral smear and most significant procedure at first visit (numbers and percentages)	33
Figure 19: Percentage of new patients seen, by result of referral smear and most significant procedure at first visit	33
Tables 20a/b: New patients seen, by most significant procedure at first visit and colposcopy clinic (numbers and percentages).....	34
Figure 20: Percentage of new patients seen, by most significant procedure at first visit and colposcopy clinic.....	34
Tables 21a/b: New patients seen, by colposcopic opinion and worst outcome of histology (numbers and percentages).....	35
Figure 21: Percentage of new patients seen having colposcopic assessment, by colposcopic opinion and worst outcome of histology	35
Tables 22a/b: New patients having a biopsy taken, by colposcopy clinic and worst outcome of histology (numbers and percentages).....	36
Figure 22: Percentage of new patients having a biopsy taken, by colposcopy clinic and worst outcome of histology	36
Tables 23a/b: Cervical biopsies taken, by type and outcome of histology (numbers and percentages)	37
Figure 23: Percentage of cervical biopsies taken, by type and outcome of histology.....	37
Tables 24a/b: Correlation of outcome from an initial punch biopsy with a subsequent LLETZ (numbers and percentages).....	38
Figure 24: Correlation of outcome from an initial punch biopsy with a subsequent LLETZ ...	38

CERVICAL SCREENING PROGRAMME: WALES 2004/2005

Introduction

This report is a detailed summary of information gathered from three sources on work undertaken for Cervical Screening Wales (CSW):

1. Information from the call and recall system common to England and Wales is collected by the Cervical Screening Administration Departments, CSADs (KC53). This is the second report to show the KC53 statistics by Local Health Board area.
2. Information about cervical smears examined by the pathology laboratories (KC61) includes smears examined as a result of uptake of invitations for screening but also opportunistic smears.
3. Information about colposcopy activity is collected from a specially commissioned computer system (ISCO-CIS) for recording clinical and administrative data within colposcopy sites in Trusts (KC65).

This report follows a series of reports produced by CSW and previously produced by the Health Statistics and Analysis Unit, part of the Welsh Assembly Government. Statistics from previous years may be found on the CSW website <http://www.screeningservices.org/csw/> and in Health Statistics Wales bulletins published by the Welsh Assembly Government.

The target for the screening programme in Wales, implemented following the establishment of CSW in April 1999, is for women to be screened at least once every three years, within a target age group of 20-64 years, commencing at their next recall date. This report includes this target age range and also the age range 25-64 years for comparison with the English bulletin on cervical cytology.

Key Facts

- € At 31 March 2005, 76% of women in the target age group (20-64 years) had been screened with an adequate result at least once in the last 5 years whilst coverage exceeded 71.7% in all Local Health Boards.
- € At 31 March 2005, coverage for 25-64 year olds was 79.1%.
- € In 2004/2005, 209,000 women were screened (including those with inadequate results); the majority after a formal invitation from the screening programme.
- € Laboratories in Wales examined around 208,000 smears in 2004/2005. (Laboratories in England examined approximately a further 15,000 on behalf of CSW).
- € 7,300 new patients were seen at colposcopy clinics in Wales in 2004/2005, 82% being directly referred by Cervical Screening Wales.

Changes in definition

Specific changes in definition are noted in the text. Prior to 1997/98, all women who were classified as "recall ceased" by the programme (for medical, age or other reasons) were excluded from the denominator used to calculate coverage. In 1998/99 there was another change of definition to exclude only those women with "recall ceased for clinical reasons" (no cervix). Since 2001/02, coverage figures include only those women who received an adequate test in the last 3 or 5 years in the numerator. Coverage figures are, therefore, not directly comparable across the years.

Coverage (Tables and Figures 1 and 2)

The reported coverage by the screening programme of women aged 20-64 was 62% in 1989/90 when population screening was introduced and has been over 80% since 1992/93. In 2004/2005 just under 76% of women aged 20-64 years had been tested with an adequate result in the last 5 years. There is relatively little variation in coverage between Local Health Boards, ranging from 71.7% in Cardiff to 80.1% in Monmouthshire. However, coverage has fallen slightly across Wales.

Invitations for screening (Tables and Figures 3 to 7)

Standard procedures for issuing first and subsequent reminders are:

- € 6 month interval between first and second invitation
- € 6 month interval between second invitation and the final non-responder card.

In 2004/2005 around 298,000 women aged 20-64 were invited for screening (Table 3). The invitation was a first call for screening for 15.9% of these women and a routine recall for 64.2%. For 15.9% it was the result of a repeat smear being advised, and for 4.0% a recall because the previous smear was inadequate.

In 2004/2005, about 206,000 women aged 20-64 were tested (table 5). 5.4% of these were tested in response to a first invitation and 57.2% following a routine recall. 16.0% were reported to be as a result of opportunistic screening, defined as women screened who had not been issued an invitation. From 2003/2004 there is a new category showing those women who have been tested whilst ceased from recall.

The number of opportunistic smears examined in the target age group has fallen in the last few years from just over 50,000 in 1999/2000 to 33,000 in 2004/2005. The number of smears taken from women aged under 20 years has fallen from 3,647 in 1999/2000 to 241 in 2004/2005, and 83.8% of these are opportunistic smears.

CSW recommends that screening is not undertaken in uninvited women under 20 years even if sexually active.

Note that the uptake of invitations cannot be accurately measured from these figures since the tests undertaken in the screening year (1st April to 31st March) do not necessarily result from an invitation issued in the same screening year.

Test Results (Tables and Figures 8 to 9)

The data for these tables and figures come from the KC53 return and differs from that shown in Tables 10 to 13 and associated figures, which come from the KC61 return. The former table relates to women and the latter to smears.

Note that these test results relate to the **most severe** result during the year from 1997/98 onwards and not to the **most recent** result as those prior to 1997.

From 2003/2004 onwards, the tables and graphs show borderline, mild dyskaryosis and high grade test results.

This report summarises the results of all screening tests sent to laboratories including the conventional Pap smears and liquid based cytology (LBC). Caution should therefore be taken when interpreting results from different laboratories and when comparing all Wales figures with previous years. A full report of the LBC pilot has been issued separately.

Smears Examined (Tables and Figures 10 to 13)

Nearly 208,000 smears were examined in laboratories in Wales in 2004/2005. Three English laboratories at Chester, Shrewsbury and Hereford examine smears for Welsh residents and some of this workload is shown accounting for the additional 4,500 smears in the total.

For tests taken on Welsh residents, 5.9% were reported as inadequate with wide variation between laboratories.

Most smears are taken in general practice (83.7%). The percentages of high grade smears (moderate dyskaryosis or worse) are generally higher from GUM clinics and NHS hospitals than from GPs and NHS community clinics. From 2003/2004 onwards, Table 10 and Figure 10 show the proportion of high grade results reported by source of smear. Previous reports showed positive results (severe dyskaryosis or worse).

In 2004/2005, of the 178,500 women of all ages who had an adequate smear taken in GP or NHS community clinics, 93.1% were negative, 3.6% showed borderline changes, 2.1% mild dyskaryosis, 0.6% moderate dyskaryosis and 0.5% were "positive" showing severe dyskaryosis or worse.

Tables 13a/b and Figure 13 show the distribution of inadequate smears by age. The highest proportion of smears which are inadequate are for women in their 20s and 30s.

Correlation with Histology (Tables and Figures 14 & 15)

The revision of the KC61 return in 1998 in England and Wales included a new table looking at women recommended for gynaecological referral during a 3 month period of the year. From 2002/2003, the results are shown

for referrals during the previous **twelve months**. Table 14a shows referrals following smears classed as inadequate, borderline or mild dyskaryosis. Table 14c shows referrals following smears classed as moderate dyskaryosis or worse.

From these data the Positive Predictive Value (PPV) has been calculated (method shown in notes to Table 15). The PPV is used to correlate high grade cytology with histology and records the proportion of cases in which a biopsy following a smear reported as moderate dyskaryosis or worse yields a histological diagnosis of CIN2 or worse.

Referrals to Colposcopy (Tables and Figures 16 to 24)

This is the fourth all Wales statistical report to be published for colposcopy services. On 1st April 2001, CSW began collecting standard information on a dedicated computer system (ISCO-CIS) from colposcopy clinics throughout Wales. These statistics have been derived directly from this system. Further training and data validation procedures continue to be undertaken to improve the robustness of these summary statistics.

There were 7,300 new patients seen at colposcopy clinics during 2004/2005 (Table 16). Of these, 82% were directly referred because of the smear result and 18% were referred for clinical reasons. Over 31% of all referrals were for a smear result of moderate dyskaryosis or worse.

Table 17 and Figure 17 show the time taken from the receipt of referral to the first appointment offered by the colposcopy clinic, excluding patient instigated delays. 78% of referrals with a moderate dyskaryosis or worse smear were offered an appointment within four weeks (90% target). Nearly 82% of all referrals were offered an appointment within eight weeks (90% target).

Table 18 and Figure 18 show activity at all attended visits in 2004/2005. There were 22,000 recorded visits, with a wide range in the practice of "select and treat" (0% to 14.5% of visits). 15% of visits are for a smear/swab only.

Tables and Figures 19 and 20 show procedures undertaken for new referrals. 32% of referrals do not receive invasive surgical intervention and 56% of referrals receive a diagnostic biopsy only. Diagnostic and treatment patterns show variations between clinics with the most diagnostic biopsies taken in the Royal Glamorgan and most excisions performed at Nevill Hall, Brecon and Gwynedd clinics.

The correlation between the colposcopic opinion and the worst histology result recorded is shown in Table 21 and Figure 21. 61.7% of histology results reported as CIN2 or worse were similarly identified on assessment. 73.6% of lesions thought by the colposcopist to be high grade or worse were found to be CIN2 or worse on histology (known results).

Table 23 and Figure 23 show the number of biopsies taken and the results. The correlation Table 24 shows that of CIN3 found in LLETZ biopsies (not select and treat), 13% had an initial punch biopsy within three months reported as CIN1 or less.

WALES	Number of women					Percentage tested within the			
	resident at 31 March	with recall ceased for			with no cytology record	tested within the		tested within the	
		clinical reasons	age reasons	other reasons		last 3 years	last 5 years	last 3 years ^{1,2}	last 5 years ^{1,2}
All ages	1,547,429	117,355	66,668	148,083	398,778	533,135	649,277	37.3%	45.4%
Ages 20-64	894,335	78,283	7,507	5,933	734	518,228	617,242	63.5%	75.6%
Ages 25-64	794,749	78,268	7,507	5,918	259	473,810	567,027	66.1%	79.1%
Under 20	356,752	-	-	-	347,570	373	403	0.1%	0.1%
20-24	99,586	15	-	15	475	44,418	50,215	44.6%	50.4%
25-29	86,495	55	-	62	131	51,287	63,133	59.3%	73.0%
30-34	98,173	539	-	150	54	62,790	77,294	64.3%	79.2%
35-39	110,373	2,258	-	225	25	72,189	87,817	66.8%	81.2%
40-44	111,911	5,839	-	341	15	72,000	86,679	67.9%	81.7%
45-49	99,670	10,494	-	466	11	61,356	72,464	68.8%	81.3%
50-54	96,531	16,057	-	561	13	55,418	65,025	68.9%	80.8%
55-59	104,727	22,456	-	922	7	55,809	64,644	67.8%	78.6%
60-64	86,869	20,570	7,507	3,191	3	42,961	49,971	64.8%	75.4%
65-69	75,200	16,438	25,329	28,111	282	13,397	28,357	22.8%	48.3%
70-74	67,098	12,209	19,191	34,599	806	865	2,513	1.6%	4.6%
75+	154,044	10,425	14,641	79,440	49,386	272	762	0.2%	0.5%

Figure 1a: Screening coverage of all age groups^{1,2}

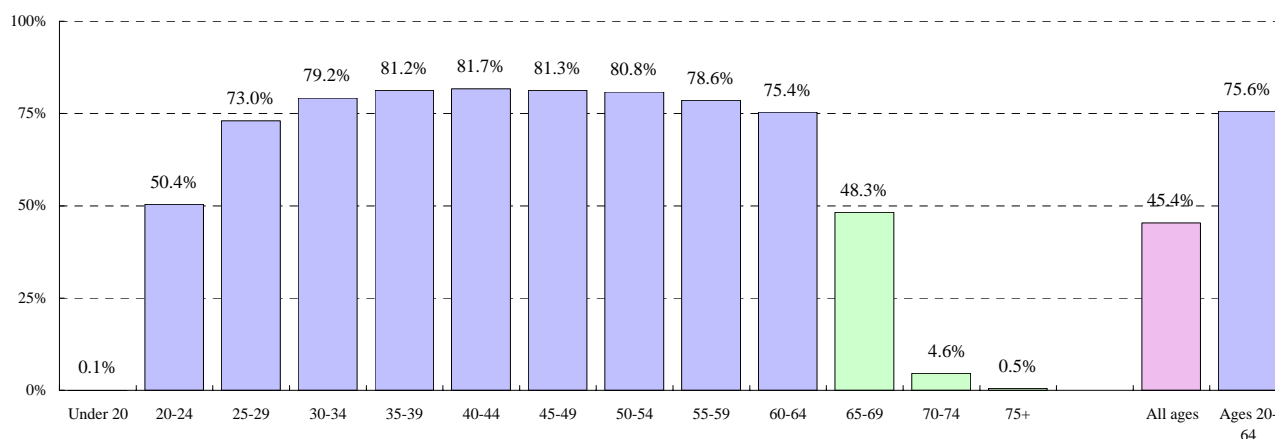
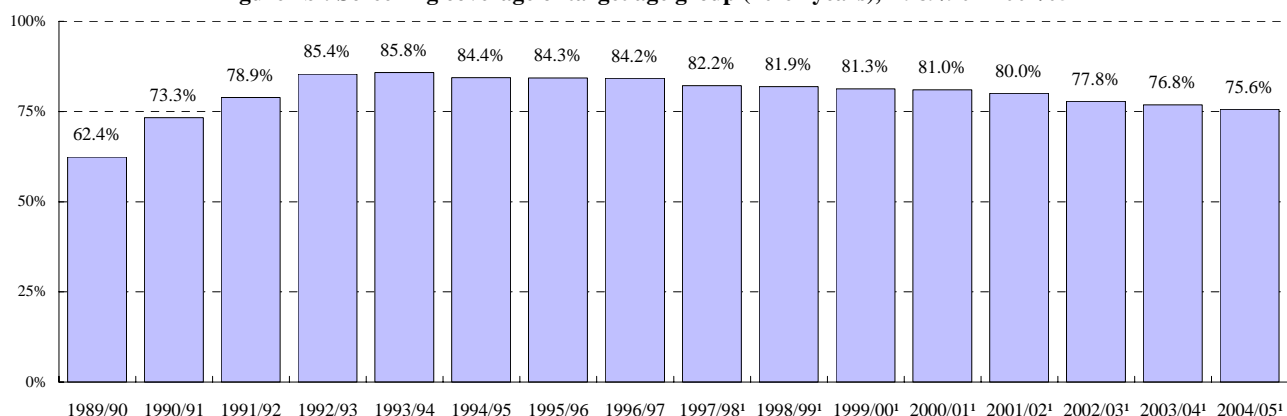


Figure 1b : Screening coverage of target age group (20-64 years), 1989/90 - 2004/05^{1,2}



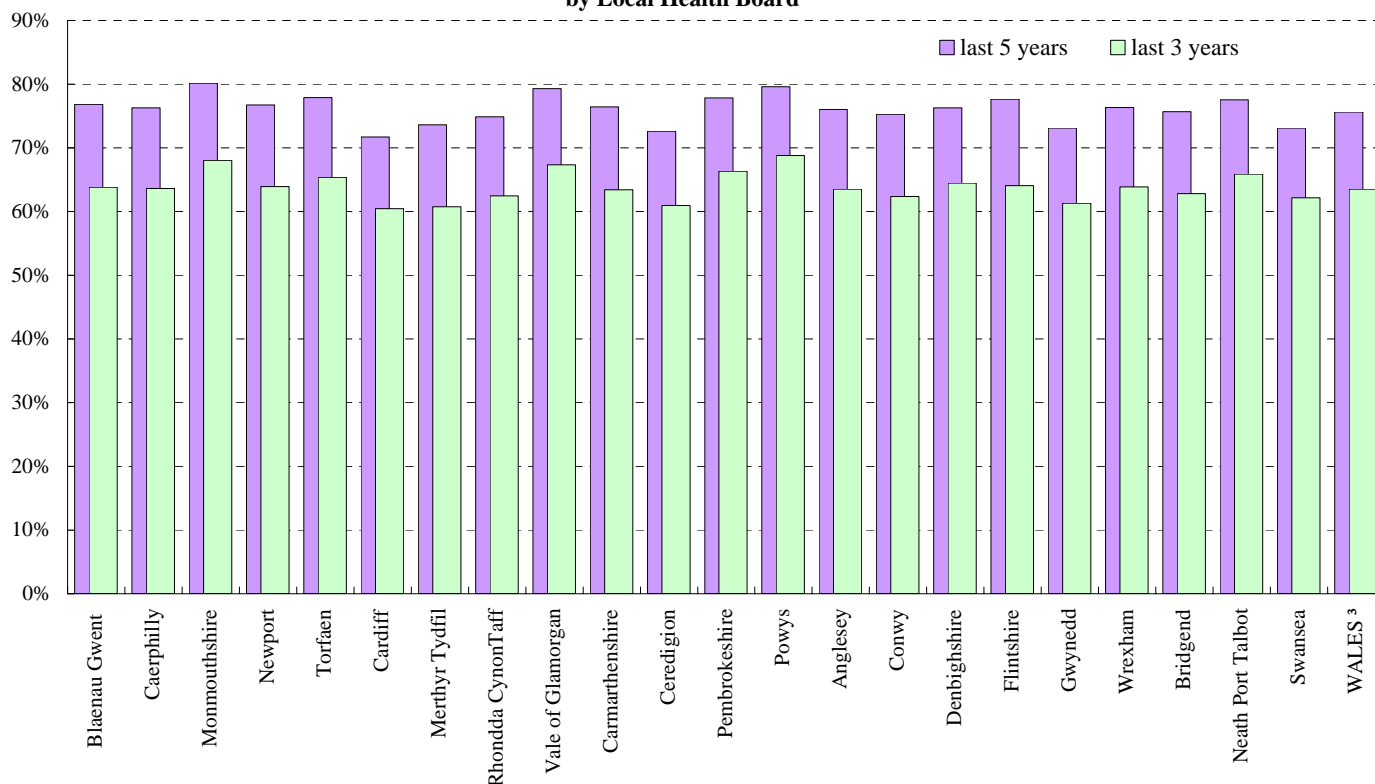
NOTES:

¹ Until 1996/97 the denominator used in calculating the percentage was the resident population less those women with recall ceased. In 1997/98 recall ceased was split into 'age', 'clinical' and 'other' reasons. Those with with recall ceased for reasons other than age were excluded from the denominator. This was revised again in 1998/99 to exclude only those women with 'recall ceased for clinical reasons' (ie no cervix). The figure for 1997/98 has been revised to the same basis. This may, however, differ from earlier figures produced. In 2001/02, this was revised again to count only adequate tests taken in the previous three and five years.

² Percentage of women tested in the last 3 years (3.5 years in 1993/94) or 5 years (5.5 years in 1993/94).

Local Health Board	Number of women						Percentage tested within the		
	resident at 31 March	with recall ceased for			with no cytology record	tested within the		last 3 years ^{1,2}	last 5 years ^{1,2}
		clinical reasons	age reasons	other reasons		last 3 years	last 5 years		
Blaenau Gwent	21,421	2,357	201	54	1	12,171	14,651	63.8%	76.9%
Caerphilly	53,181	4,456	436	169	2	30,996	37,171	63.6%	76.3%
Monmouthshire	24,789	2,489	250	60	-	15,177	17,869	68.1%	80.1%
Newport	40,599	3,372	311	90	3	23,801	28,567	63.9%	76.7%
Torfaen	26,914	2,502	236	69	-	15,957	19,016	65.4%	77.9%
Cardiff	104,305	6,266	612	736	233	59,251	70,311	60.4%	71.7%
Merthyr Tydfil	16,471	1,361	116	118	17	9,177	11,122	60.7%	73.6%
Rhondda CynonTaff	70,948	5,977	588	584	75	40,568	48,635	62.4%	74.9%
Vale of Glamorgan	35,134	2,862	312	246	46	21,731	25,598	67.3%	79.3%
Carmarthenshire	48,773	5,618	458	283	14	27,375	32,978	63.4%	76.4%
Ceredigion	27,023	2,653	240	171	6	14,854	17,701	61.0%	72.6%
Pembrokeshire	32,664	3,315	348	244	18	19,470	22,848	66.3%	77.8%
Powys	37,001	3,734	412	271	24	22,880	26,473	68.8%	79.6%
Anglesey	18,567	1,718	201	105	9	10,698	12,812	63.5%	76.0%
Conwy	31,583	3,001	346	243	12	17,820	21,513	62.3%	75.3%
Denbighshire	28,263	2,834	269	230	12	16,396	19,399	64.5%	76.3%
Flintshire	43,248	3,932	370	305	18	25,185	30,529	64.1%	77.7%
Gwynedd	35,269	2,721	365	252	15	19,957	23,790	61.3%	73.1%
Wrexham	38,796	3,433	279	273	34	22,578	26,992	63.8%	76.3%
Bridgend	43,309	3,706	341	438	53	24,875	29,962	62.8%	75.7%
Neath Port Talbot	39,520	3,935	298	329	33	23,439	27,589	65.9%	77.5%
Swansea	70,665	5,641	480	635	87	40,408	47,532	62.1%	73.1%
WALES³	894,335	78,283	7,507	5,933	734	518,228	617,242	63.5%	75.6%

Figure 2: Percentage of target age group (20-64 years) screened within the last 3 and 5 years, by Local Health Board^{1,2}



NOTES:

¹ Until 1996/97 the denominator used in calculating the percentage was the resident population less those women with recall ceased. In 1997/98 recall ceased was split into 'age', 'clinical' and 'other' reasons. Those with with recall ceased for reasons other than age were excluded from the denominator. This was revised again in 1998/99 to exclude only those women with 'recall ceased for clinical reasons' (ie no cervix). The figure for 1997/98 has been revised to the same basis. This may, however, differ from earlier figures produced. In 2001/02, this was revised again to count only adequate tests taken in the previous three and five years.

² Percentage of women tested in the last 3 years (3.5 years in 1993/94) or 5 years (5.5 years in 1993/94).

³ A small proportion of women could not be allocated to a Local Health Board, but are shown in the total for Wales.

Table 3a: Number of women invited in the year, by type of invitation and age at test

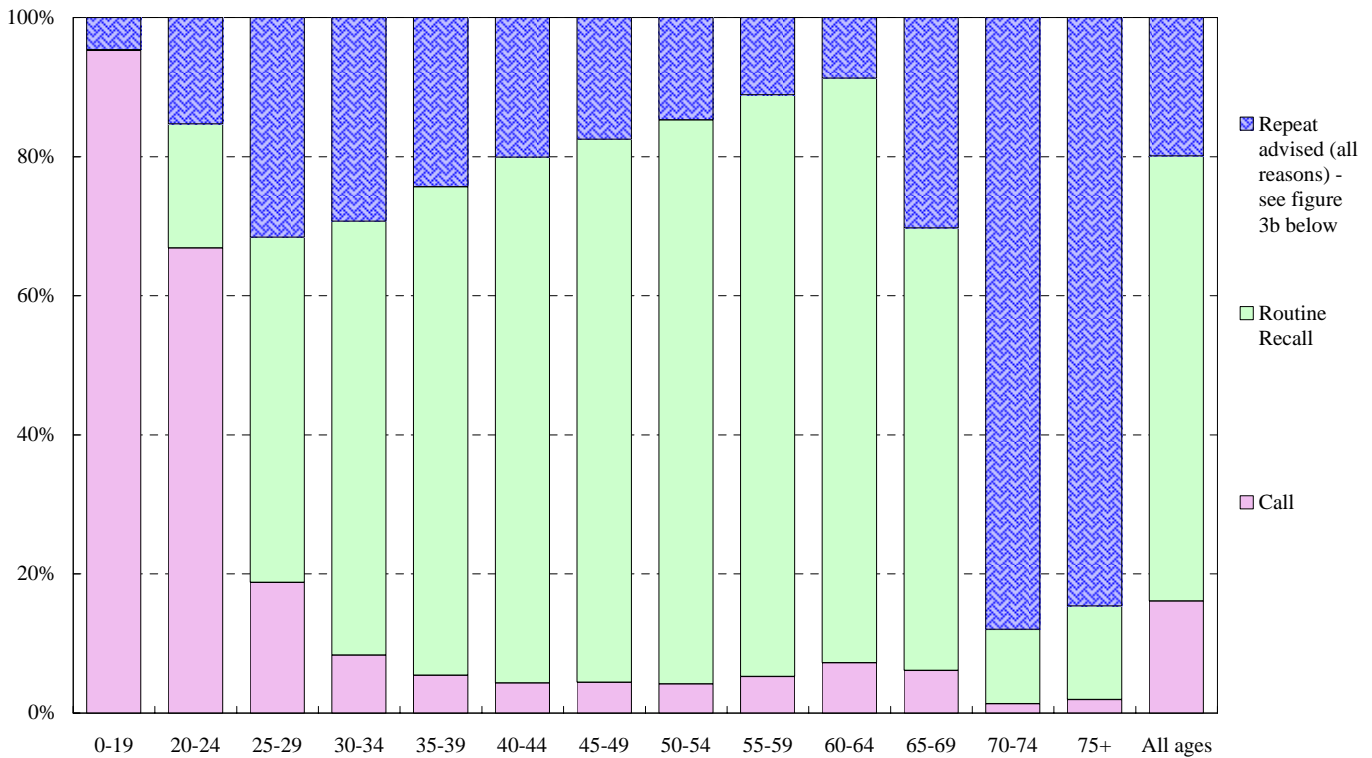
Source: KC53, part B

WALES	Total	Call	Routine recall	Repeat advised for reasons of		
				Surveillance	Abnormality	Inadequate smear
All ages	301,919	48,649	193,083	38,953	9,194	12,040
Ages 20-64	298,312	47,426	191,615	38,383	9,071	11,817
Ages 25-64	254,943	18,429	183,882	35,287	6,911	10,434
Under 20	1,135	1,081	1	10	29	14
20-24	43,369	28,997	7,733	3,096	2,160	1,383
25-29	32,080	6,020	15,924	6,742	1,659	1,735
30-34	36,214	3,011	22,593	7,408	1,335	1,867
35-39	39,455	2,150	27,694	6,601	1,181	1,829
40-44	37,975	1,646	28,698	5,107	925	1,599
45-49	31,379	1,386	24,492	3,595	748	1,158
50-54	27,896	1,165	22,620	2,672	543	896
55-59	27,838	1,457	23,281	1,983	355	762
60-64	22,106	1,594	18,580	1,179	165	588
65-69	2,270	139	1,444	447	67	173
70-74	150	2	16	84	17	31
75+	52	1	7	29	10	5

Table 3b: Percentage of women invited in the year, by type of invitation and age at test

WALES	Total	Call	Routine recall	Repeat advised for reasons of		
				Surveillance	Abnormality	Inadequate smear
All ages	100%	16.1%	64.0%	12.9%	3.0%	4.0%
Ages 20-64	100%	15.9%	64.2%	12.9%	3.0%	4.0%
Ages 25-64	100%	7.2%	72.1%	13.8%	2.7%	4.1%
Under 20	100%	95.2%	0.1%	0.9%	2.6%	1.2%
20-24	100%	66.9%	17.8%	7.1%	5.0%	3.2%
25-29	100%	18.8%	49.6%	21.0%	5.2%	5.4%
30-34	100%	8.3%	62.4%	20.5%	3.7%	5.2%
35-39	100%	5.4%	70.2%	16.7%	3.0%	4.6%
40-44	100%	4.3%	75.6%	13.4%	2.4%	4.2%
45-49	100%	4.4%	78.1%	11.5%	2.4%	3.7%
50-54	100%	4.2%	81.1%	9.6%	1.9%	3.2%
55-59	100%	5.2%	83.6%	7.1%	1.3%	2.7%
60-64	100%	7.2%	84.0%	5.3%	0.7%	2.7%
65-69	100%	6.1%	63.6%	19.7%	3.0%	7.6%
70-74	100%	1.3%	10.7%	56.0%	11.3%	20.7%
75+	100%	1.9%	13.5%	55.8%	19.2%	9.6%

Figure 3a: Percentage of invitations, by type of invitation and age



The total number of invitations (all ages) where the type of invitation was "repeat advised within 3 years" is just over 60,100 (or 19.9% of all invitations). The chart below (Figure 3b) shows the different reasons for the early recall.

Figure 3b: Percentage of invitations, where repeat advised in less than 3 years, by reason and age

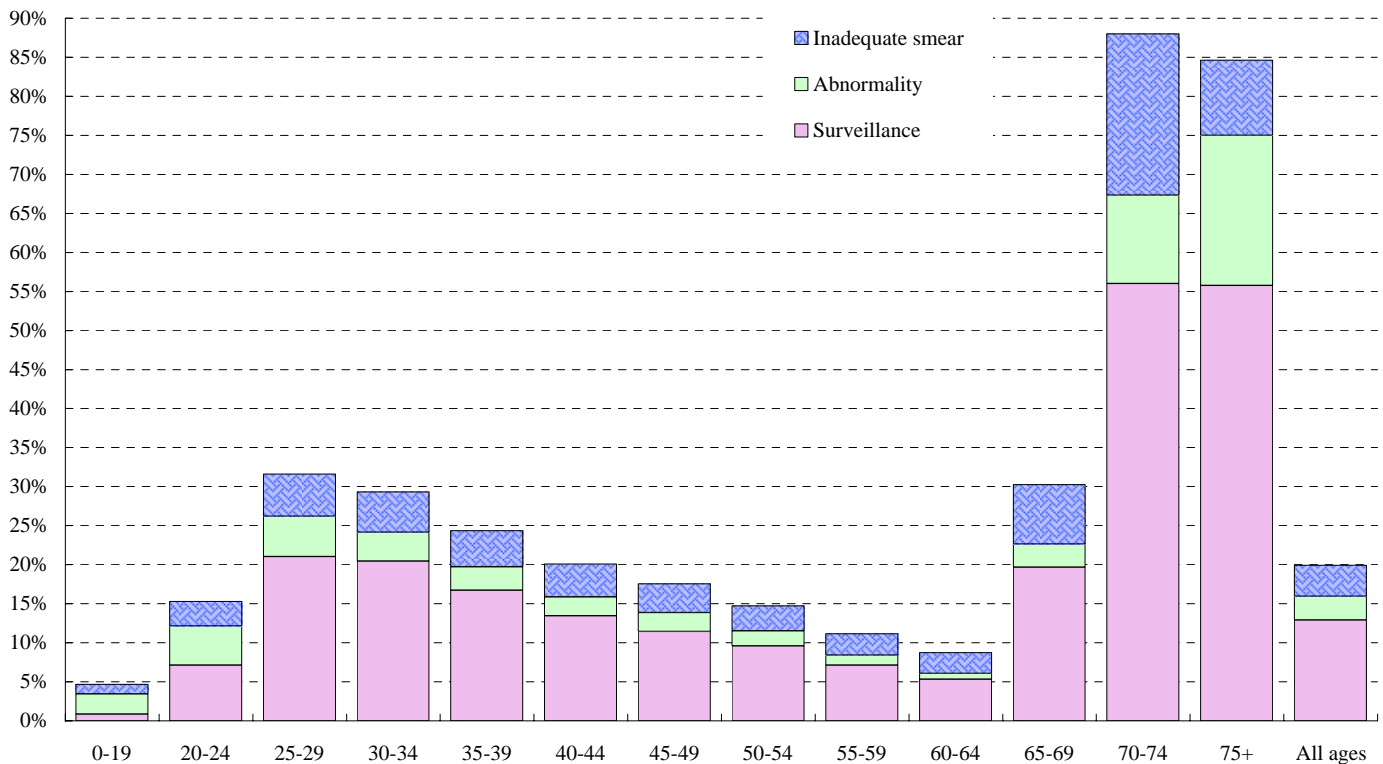


Table 4a: Number of women aged 20-64 invited in the year, by type of invitation and Local Health Board (LHB) *Source: KC53, part B*

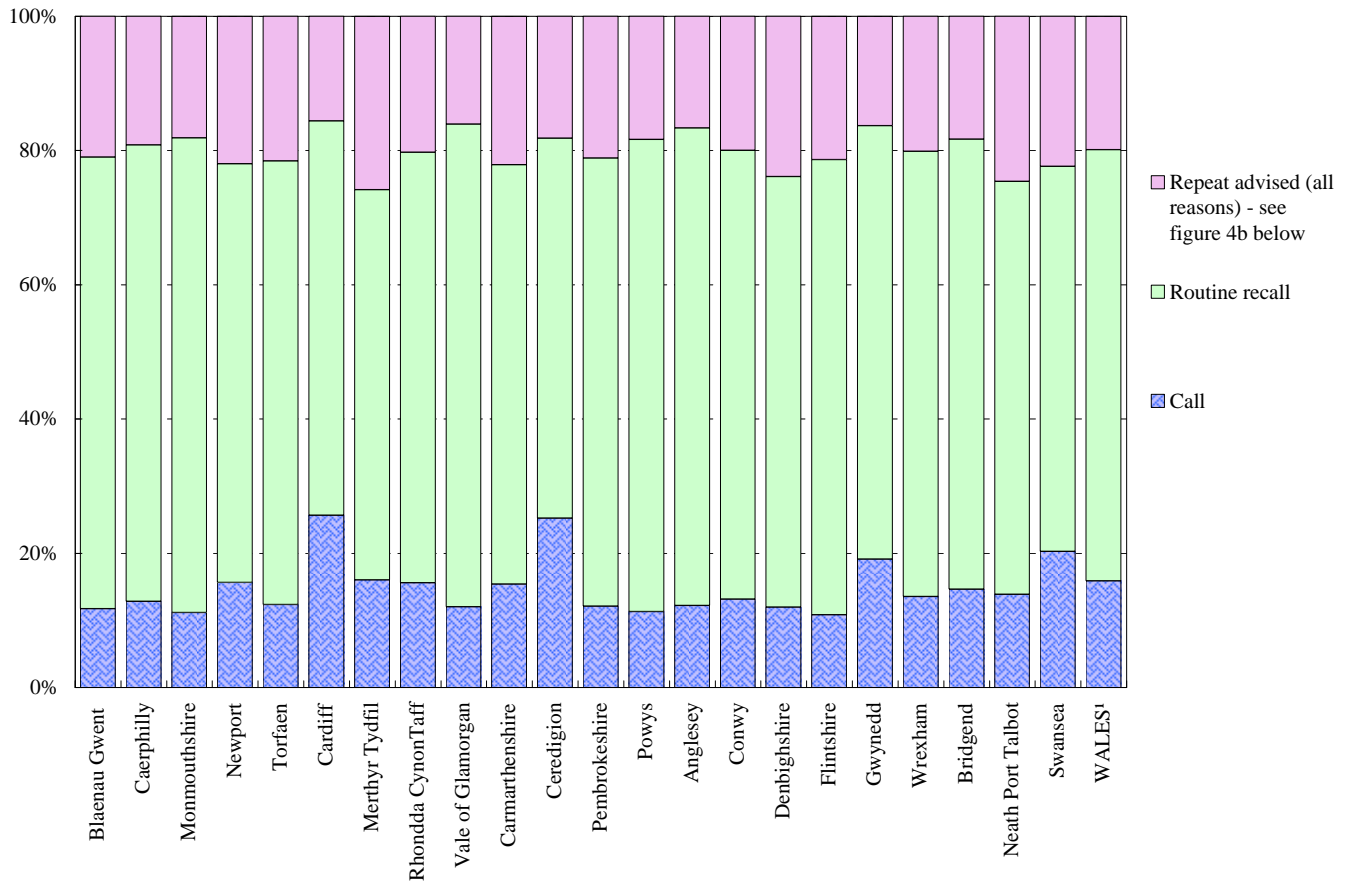
Local Health Board	Total	Call	Routine recall	Repeat advised for reasons of		
				Surveillance	Abnormality	Inadequate smear
Blaenau Gwent	7,579	889	5,100	1,276	190	124
Caerphilly	19,862	2,545	13,507	2,846	484	480
Monmouthshire	8,557	955	6,051	1,220	192	139
Newport	14,286	2,236	8,912	2,404	425	309
Torfaen	9,728	1,200	6,430	1,638	267	193
Cardiff	34,401	8,820	20,210	3,382	1,019	970
Merthyr Tydfil	5,760	923	3,348	877	308	304
Rhondda CynonTaff	23,214	3,624	14,888	2,826	681	1,195
Vale of Glamorgan	10,974	1,320	7,890	1,231	308	225
Carmarthenshire	15,495	2,385	9,682	2,121	541	766
Ceredigion	9,111	2,300	5,156	935	288	432
Pembrokeshire	10,271	1,244	6,855	1,389	376	407
Powys	11,546	1,307	8,119	1,252	301	567
Anglesey	6,040	738	4,298	606	119	279
Conwy	10,467	1,377	6,998	1,294	299	499
Denbighshire	9,242	1,105	5,929	1,350	304	554
Flintshire	14,632	1,582	9,927	1,795	449	879
Gwynedd	11,740	2,246	7,579	1,141	225	549
Wrexham	13,040	1,766	8,647	1,643	487	497
Bridgend	14,110	2,067	9,456	1,474	443	670
Neath Port Talbot	12,856	1,781	7,912	2,099	480	584
Swansea	23,605	4,783	13,543	3,371	828	1,080
WALES¹	298,312	47,426	191,615	38,383	9,071	11,817

Table 4b: Percentage of women aged 20-64 invited in the year, by type of invitation and Local Health Board (LHB)

Local Health Board	Total	Call	Routine recall	Repeat advised for reasons of		
				Surveillance	Abnormality	Inadequate smear
Blaenau Gwent	100%	11.7%	67.3%	16.8%	2.5%	1.6%
Caerphilly	100%	12.8%	68.0%	14.3%	2.4%	2.4%
Monmouthshire	100%	11.2%	70.7%	14.3%	2.2%	1.6%
Newport	100%	15.7%	62.4%	16.8%	3.0%	2.2%
Torfaen	100%	12.3%	66.1%	16.8%	2.7%	2.0%
Cardiff	100%	25.6%	58.7%	9.8%	3.0%	2.8%
Merthyr Tydfil	100%	16.0%	58.1%	15.2%	5.3%	5.3%
Rhondda CynonTaff	100%	15.6%	64.1%	12.2%	2.9%	5.1%
Vale of Glamorgan	100%	12.0%	71.9%	11.2%	2.8%	2.1%
Carmarthenshire	100%	15.4%	62.5%	13.7%	3.5%	4.9%
Ceredigion	100%	25.2%	56.6%	10.3%	3.2%	4.7%
Pembrokeshire	100%	12.1%	66.7%	13.5%	3.7%	4.0%
Powys	100%	11.3%	70.3%	10.8%	2.6%	4.9%
Anglesey	100%	12.2%	71.2%	10.0%	2.0%	4.6%
Conwy	100%	13.2%	66.9%	12.4%	2.9%	4.8%
Denbighshire	100%	12.0%	64.2%	14.6%	3.3%	6.0%
Flintshire	100%	10.8%	67.8%	12.3%	3.1%	6.0%
Gwynedd	100%	19.1%	64.6%	9.7%	1.9%	4.7%
Wrexham	100%	13.5%	66.3%	12.6%	3.7%	3.8%
Bridgend	100%	14.6%	67.0%	10.4%	3.1%	4.7%
Neath Port Talbot	100%	13.9%	61.5%	16.3%	3.7%	4.5%
Swansea	100%	20.3%	57.4%	14.3%	3.5%	4.6%
WALES¹	100%	15.9%	64.2%	12.9%	3.0%	4.0%

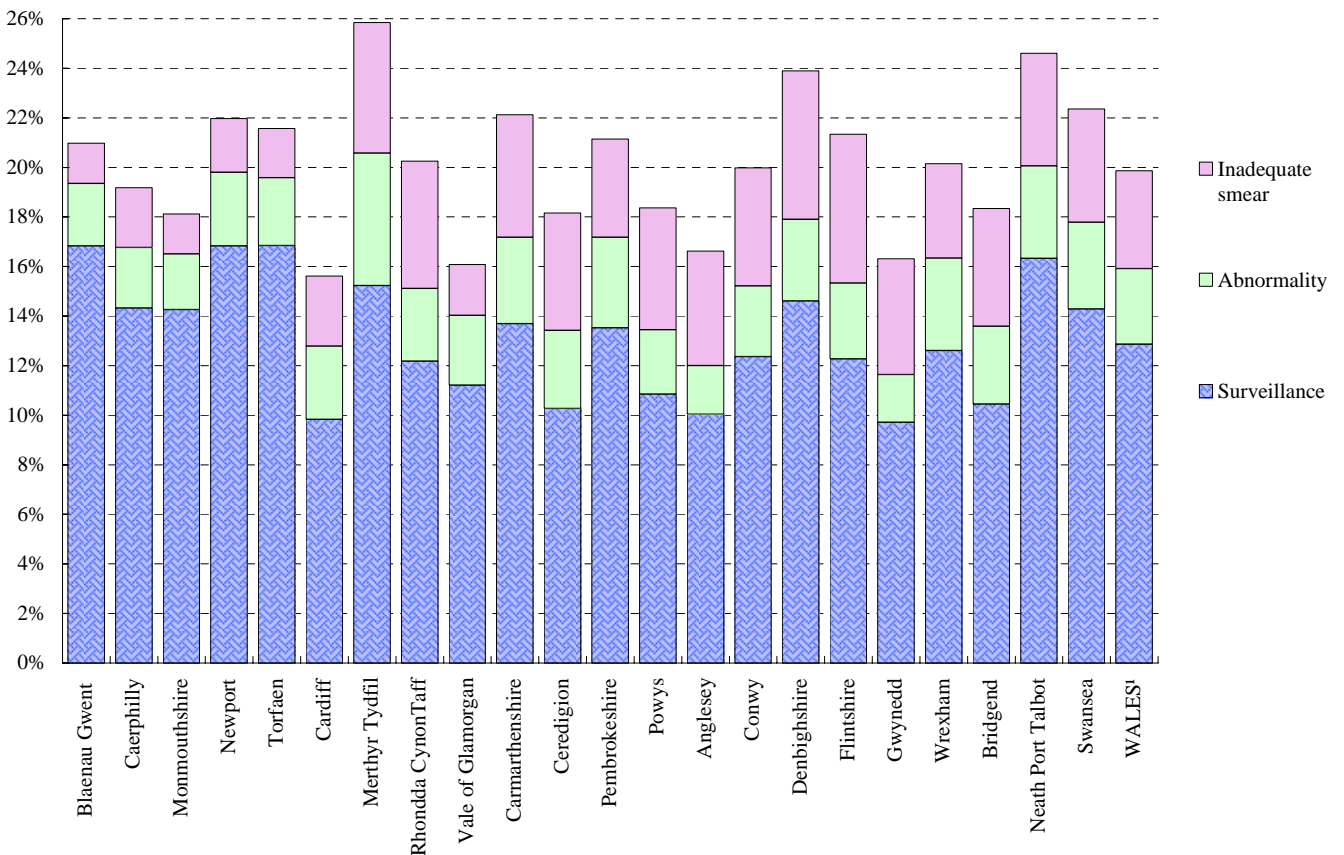
¹ A small proportion of women could not be allocated to a Local Health Board, but are shown in the total for Wales.

Figure 4a: Percentage of invitations to women aged 20-64, by type of invitation and Local Health Board



The total number of invitations (age 20-64) where the type of invitation was "repeat advised within 3 years" is just over 59,200 (or 19.9% of all invitations). The chart below (Figure 4b) shows the different reasons for the early recall.

Figure 4b: Percentage of invitations to women aged 20-64, where repeat advised in less than 3 years, by reason and Local Health Board



¹ A small proportion of women could not be allocated to a Local Health Board, but are shown in the total for Wales.

Table 5a: Number of women tested¹, by type of invitation and age at test

Source: KC53, part C

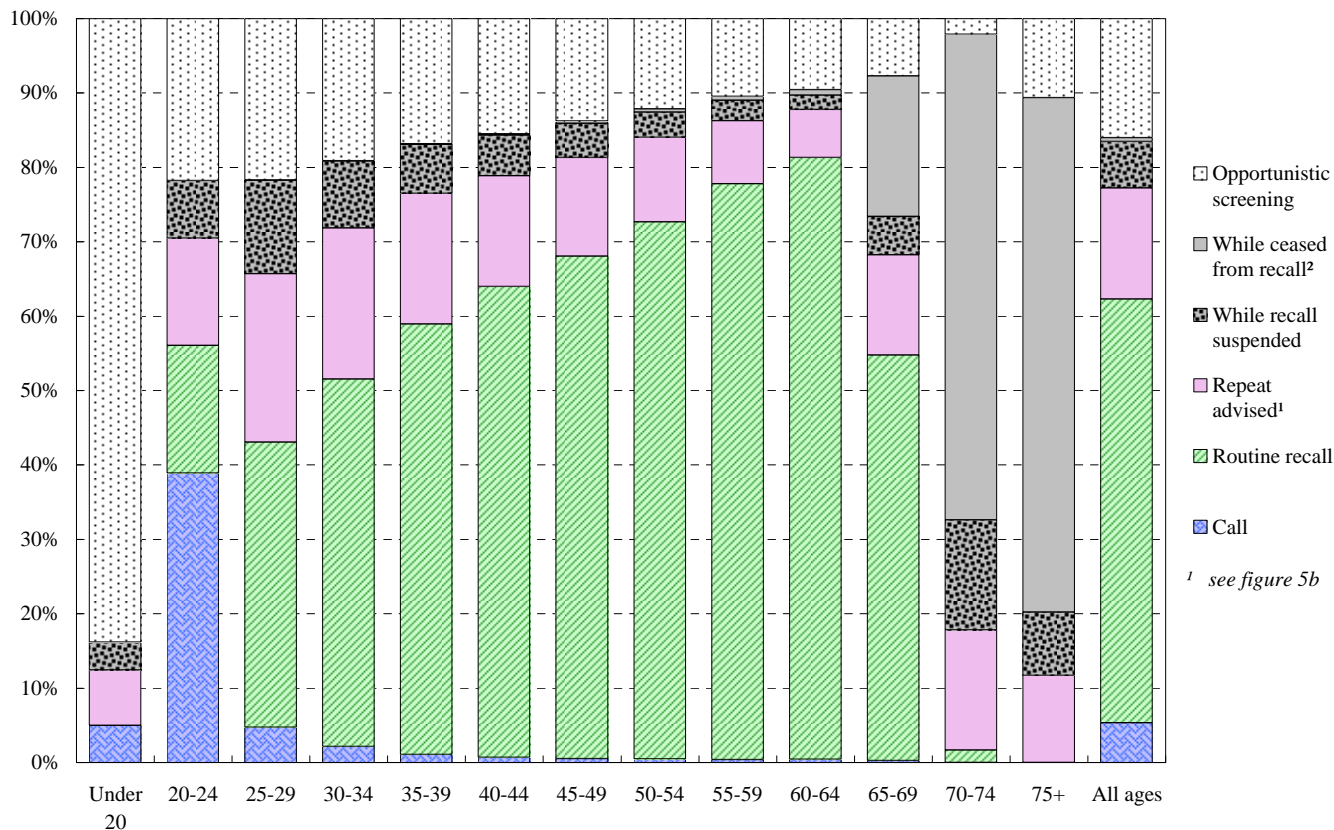
WALES	Total	Call	Routine recall	Repeat advised for reasons of			While recall suspended	While ceased from recall ²	Opportunistic screening
				Surveillance	Abnormality	Inadequate			
All ages	208,951	11,146	119,041	20,186	5,148	5,835	13,052	1,139	33,404
Ages 20-64	206,036	11,128	117,759	19,890	5,111	5,785	12,879	478	33,006
Ages 25-64	183,739	2,458	113,930	18,589	3,893	5,092	11,144	478	28,155
0-19	241	12	-	5	10	3	9	-	202
20-24	22,297	8,670	3,829	1,301	1,218	693	1,735	-	4,851
25-29	21,965	1,039	8,422	3,233	835	900	2,767	3	4,766
30-34	25,994	561	12,834	3,650	724	906	2,343	8	4,968
35-39	28,783	307	16,666	3,530	656	856	1,901	27	4,840
40-44	27,971	189	17,713	2,812	572	780	1,519	58	4,328
45-49	23,520	120	15,891	2,046	465	604	1,081	74	3,239
50-54	20,581	99	14,855	1,568	340	430	701	90	2,498
55-59	20,028	80	15,497	1,127	198	379	548	109	2,090
60-64	14,897	63	12,052	623	103	237	284	109	1,426
65-69	2,344	6	1,278	244	26	46	121	442	181
70-74	236	-	4	36	1	1	35	154	5
75+	94	-	-	11	-	-	8	65	10

Table 5b: Percentage of women tested¹, by type of invitation and age at test

WALES	Total	Call	Routine recall	Repeat advised for reasons of			While recall suspended	While ceased from recall ²	Opportunistic screening
				Surveillance	Abnormality	Inadequate			
All ages	100%	5.3%	57.0%	9.7%	2.5%	2.8%	6.2%	0.5%	16.0%
Ages 20-64	100%	5.4%	57.2%	9.7%	2.5%	2.8%	6.3%	0.2%	16.0%
Ages 25-64	100%	1.3%	62.0%	10.1%	2.1%	2.8%	6.1%	0.3%	15.3%
0-19	100%	5.0%	0.0%	2.1%	4.1%	1.2%	3.7%	0.0%	83.8%
20-24	100%	38.9%	17.2%	5.8%	5.5%	3.1%	7.8%	0.0%	21.8%
25-29	100%	4.7%	38.3%	14.7%	3.8%	4.1%	12.6%	0.0%	21.7%
30-34	100%	2.2%	49.4%	14.0%	2.8%	3.5%	9.0%	0.0%	19.1%
35-39	100%	1.1%	57.9%	12.3%	2.3%	3.0%	6.6%	0.1%	16.8%
40-44	100%	0.7%	63.3%	10.1%	2.0%	2.8%	5.4%	0.2%	15.5%
45-49	100%	0.5%	67.6%	8.7%	2.0%	2.6%	4.6%	0.3%	13.8%
50-54	100%	0.5%	72.2%	7.6%	1.7%	2.1%	3.4%	0.4%	12.1%
55-59	100%	0.4%	77.4%	5.6%	1.0%	1.9%	2.7%	0.5%	10.4%
60-64	100%	0.4%	80.9%	4.2%	0.7%	1.6%	1.9%	0.7%	9.6%
65-69	100%	0.3%	54.5%	10.4%	1.1%	2.0%	5.2%	18.9%	7.7%
70-74	100%	0.0%	1.7%	15.3%	0.4%	0.4%	14.8%	65.3%	2.1%
75+	100%	0.0%	0.0%	11.7%	0.0%	0.0%	8.5%	69.1%	10.6%

NOTES:¹ Most recent test in year² From 2003/2004, this is a new category for smears previously classed as opportunistic screening

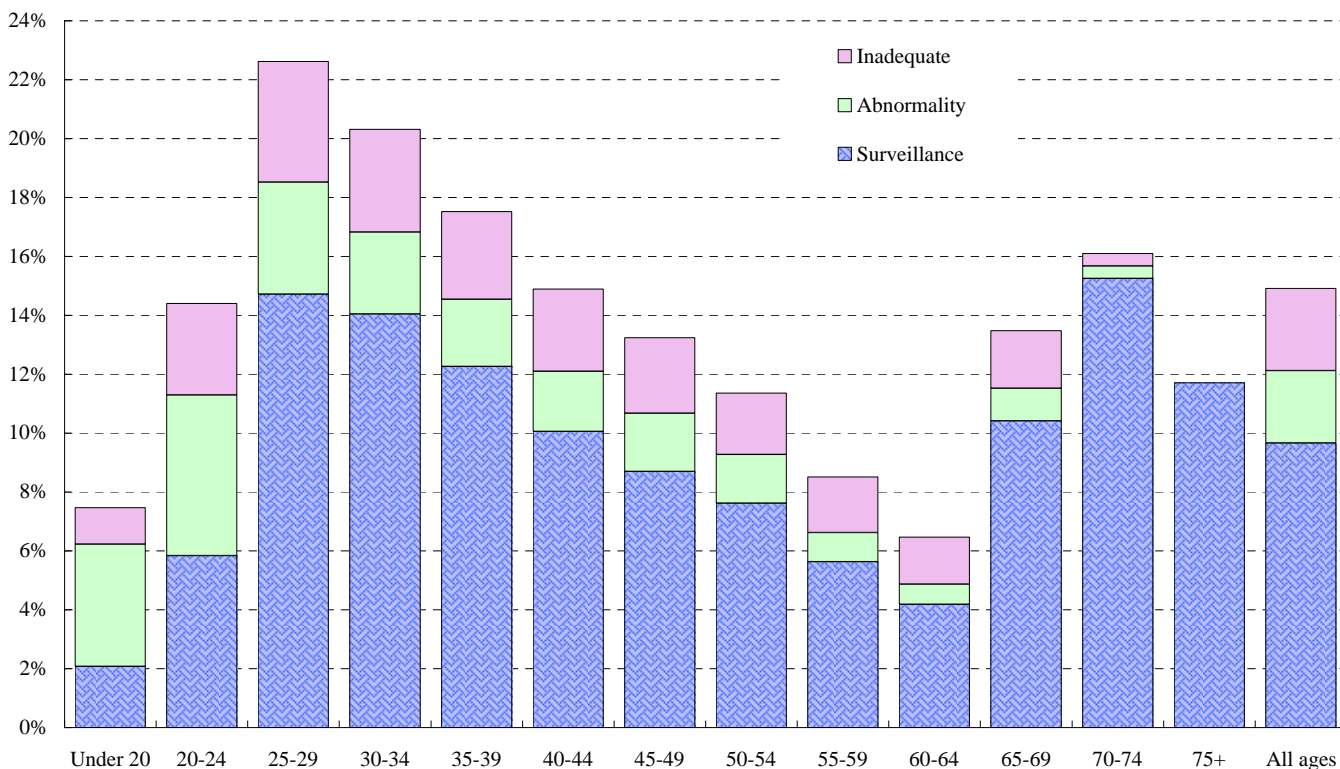
Figure 5a: Percentage of women tested, by type of invitation and age



¹ see figure 5b

The total number of women (all ages) tested where the type of invitation was "repeat advised within 3 years" is just over 31,100 (or 14.9% of all tests). The chart below (Figure 5b) shows the different reasons for the early recall.

Figure 5b: Percentage of women tested, where repeat advised within 3 years, by reason and age



NOTES:

¹ Most recent test in year

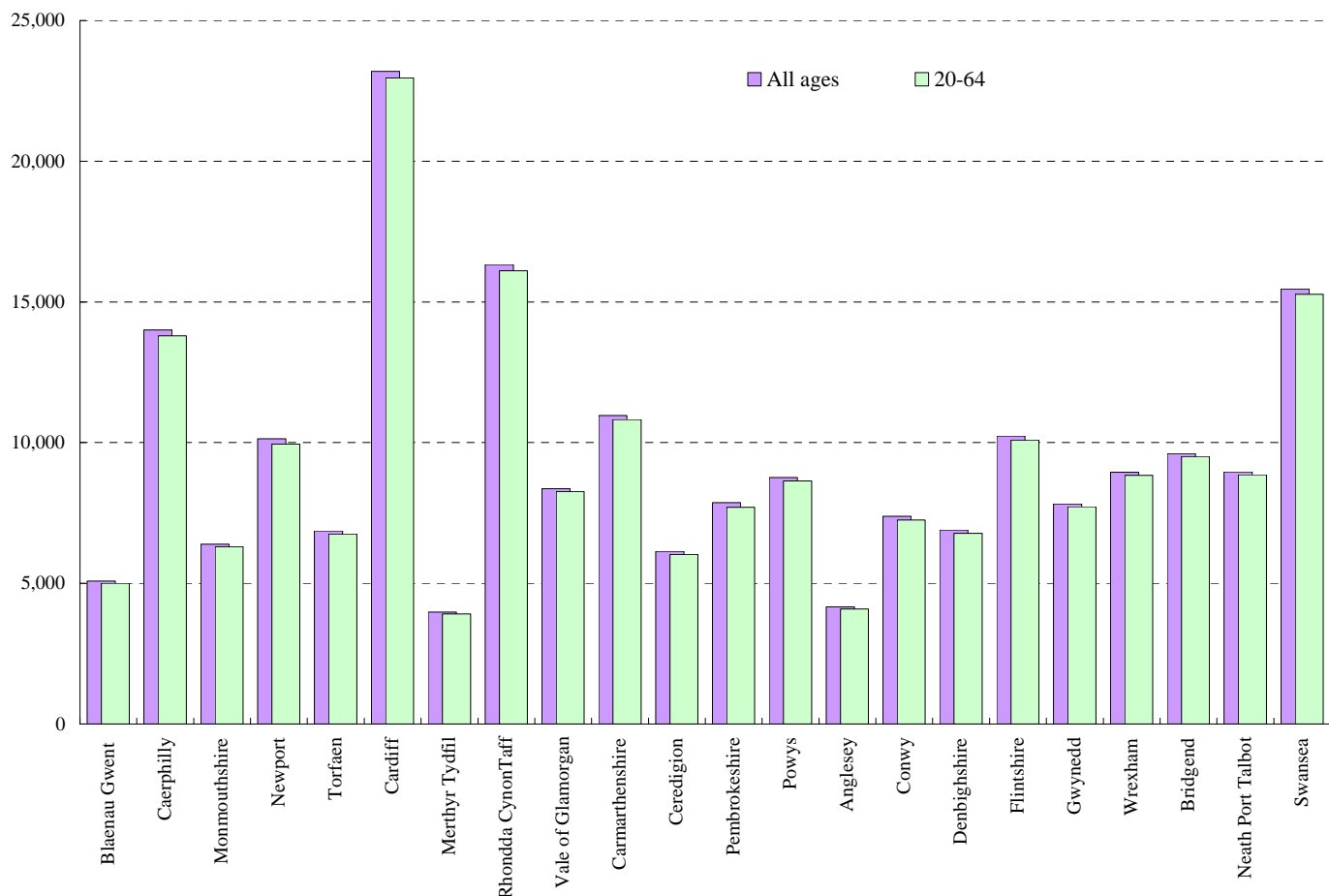
² From 2003/2004, this is a new category for smears previously classed as opportunistic screening

Table 6: Number of women tested¹ in the year, by Local Health Board (LHB)

Source: KC53, part C

Local Health Board	Under 20	20-24	25-29	30-34	35-39	40-44	45-49	50-54	55-59	60-64	65-69	70+	20-64	25-64	All ages
Blaenau Gwent	15	514	554	639	782	709	557	435	465	346	56	6	5,001	4,487	5,078
Caerphilly	23	1,450	1,547	1,827	1,904	1,856	1,517	1,366	1,359	968	167	19	13,794	12,344	14,003
Monmouthshire	4	499	553	790	930	937	800	651	666	474	77	13	6,300	5,801	6,394
Newport	18	1,109	1,152	1,276	1,483	1,418	1,104	907	858	647	127	38	9,954	8,845	10,137
Torfaen	12	701	777	836	984	937	733	696	633	452	82	20	6,749	6,048	6,863
Cardiff	32	3,911	3,145	3,108	3,010	2,832	2,364	1,868	1,581	1,143	181	18	22,962	19,051	23,193
Merthyr Tydfil	11	457	406	496	597	540	455	348	360	257	46	7	3,916	3,459	3,980
Rhondda CynonTaff	14	1,785	1,717	2,144	2,188	2,174	1,716	1,568	1,641	1,178	181	27	16,111	14,326	16,333
Vale of Glamorgan	5	793	911	1,000	1,167	1,164	1,018	846	787	580	84	9	8,266	7,473	8,364
Carmarthenshire	9	1,017	1,054	1,253	1,519	1,488	1,330	1,159	1,172	828	118	14	10,820	9,803	10,961
Ceredigion	17	775	543	640	728	804	713	690	652	483	82	12	6,028	5,253	6,139
Pembrokeshire	16	672	668	907	1,055	1,092	951	844	865	645	118	31	7,699	7,027	7,864
Powys	6	618	755	1,010	1,236	1,225	1,027	1,013	958	795	113	8	8,637	8,019	8,764
Anglesey	2	351	400	483	530	510	507	462	470	379	65	9	4,092	3,741	4,168
Conwy	5	578	651	827	1,008	1,038	871	861	771	650	107	13	7,255	6,677	7,380
Denbighshire	7	560	669	817	932	983	783	727	713	596	102	13	6,780	6,220	6,902
Flintshire	8	904	1,010	1,321	1,554	1,440	1,042	1,044	1,032	742	126	14	10,089	9,185	10,237
Gwynedd	11	831	750	993	1,015	988	931	771	789	660	76	13	7,728	6,897	7,828
Wrexham	6	946	931	1,150	1,290	1,145	1,003	860	888	625	89	9	8,838	7,892	8,942
Bridgend	4	930	926	1,285	1,448	1,327	1,108	970	831	680	94	9	9,505	8,575	9,612
Neath Port Talbot	4	943	973	1,086	1,212	1,193	1,090	849	881	633	92	4	8,860	7,917	8,960
Swansea	9	1,779	1,699	1,921	2,003	1,982	1,768	1,528	1,541	1,053	148	23	15,274	13,495	15,454
WALES²	241	22,297	21,965	25,994	28,783	27,971	23,520	20,581	20,028	14,897	2,344	330	206,036	183,739	208,951

Figure 6: Number of women tested in the year¹, by Local Health Board



NOTES:

¹ Most recent test in year

² A small proportion of women could not be allocated to a Local Health Board, but are shown in the total for Wales.

Table 7a: Number of women aged 20-64 tested¹ in the year, by type of invitation and Local Health Board (LHB)

KC53, part C

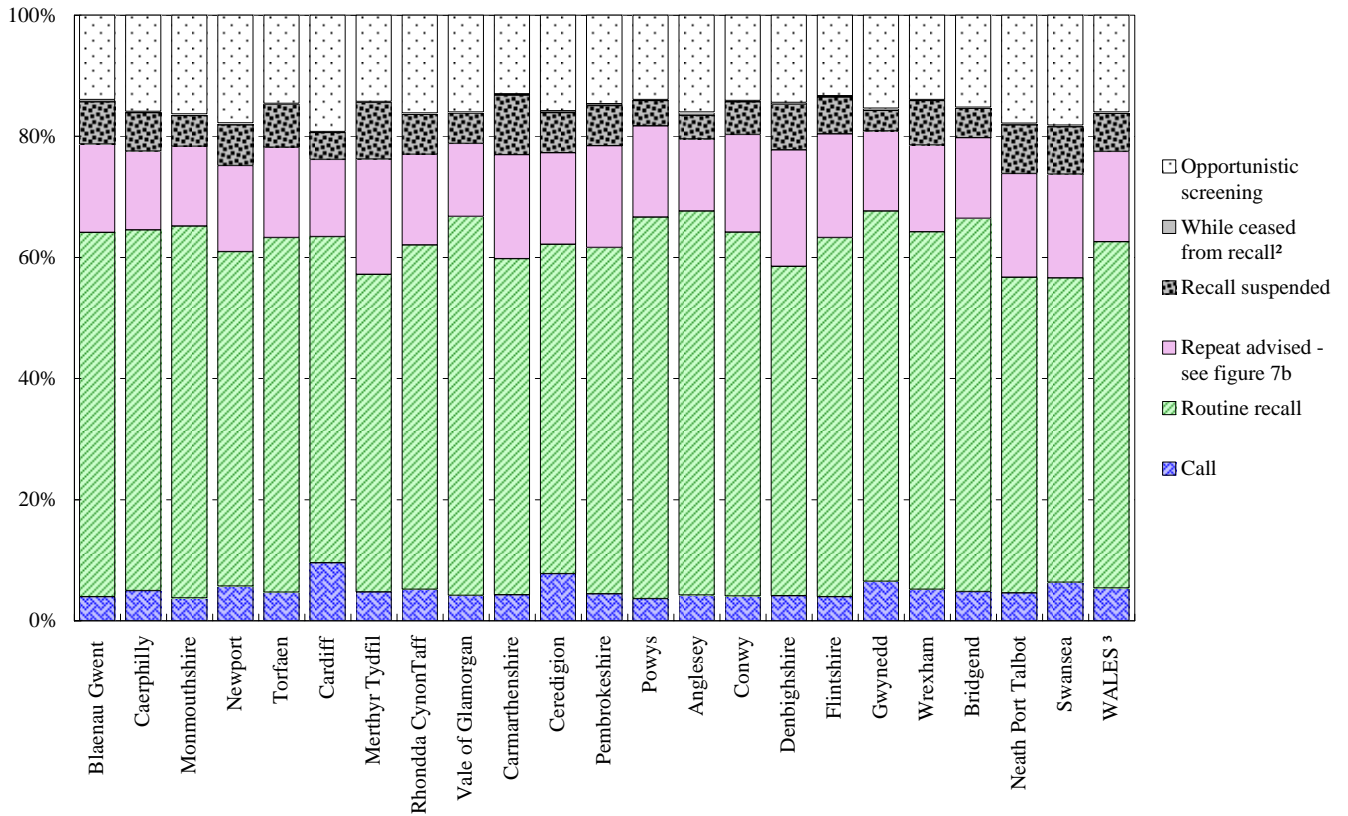
Local Health Board	Total	Call	Routine	Repeat in three years for reasons of			Recall suspended	While ceased from recall ²	Opportunistic screening
			recall	Surveillance	Abnormality	Inadequate			
Blaenau Gwent	5,001	197	3,008	599	101	31	348	18	699
Caerphilly	13,794	684	8,217	1,376	254	165	874	31	2,193
Monmouthshire	6,300	238	3,869	637	142	49	320	17	1,028
Newport	9,954	570	5,494	1,118	207	90	673	29	1,773
Torfaen	6,749	319	3,950	804	150	54	475	14	983
Cardiff	22,962	2,200	12,362	1,915	574	442	1,020	36	4,413
Merthyr Tydfil	3,916	186	2,053	439	163	143	366	7	559
Rhondda CynonTaff	16,111	835	9,160	1,490	388	533	1,067	29	2,609
Vale of Glamorgan	8,266	347	5,172	747	175	73	413	15	1,324
Carmarthenshire	10,820	464	6,004	1,039	361	457	1,065	22	1,408
Ceredigion	6,028	469	3,279	513	185	211	400	17	954
Pembrokeshire	7,699	340	4,406	818	253	222	507	27	1,126
Powys	8,637	315	5,441	801	192	309	361	14	1,204
Anglesey	4,092	173	2,595	316	64	108	160	20	656
Conwy	7,255	295	4,359	667	177	328	390	15	1,024
Denbighshire	6,780	278	3,689	676	194	435	508	22	978
Flintshire	10,089	398	5,983	977	268	486	611	21	1,345
Gwynedd	7,728	504	4,726	597	129	292	263	27	1,190
Wrexham	8,838	458	5,216	793	263	213	647	13	1,235
Bridgend	9,505	457	5,857	742	230	297	459	18	1,445
Neath Port Talbot	8,860	406	4,621	1,007	223	286	710	25	1,582
Swansea	15,274	965	7,683	1,713	390	512	1,193	41	2,777
WALES³	206,036	11,128	117,759	19,890	5,111	5,785	12,879	478	33,006

Table 7b: Percentage of women aged 20-64 tested¹ in the year, by type of invitation and Local Health Board (LHB)

Local Health Board	Total	Call	Routine	Repeat in three years for reasons of			Recall suspended	While ceased from recall ²	Opportunistic screening
			recall	Surveillance	Abnormality	Inadequate			
Blaenau Gwent	100%	3.9%	60.1%	12.0%	2.0%	0.6%	7.0%	0.4%	14.0%
Caerphilly	100%	5.0%	59.6%	10.0%	1.8%	1.2%	6.3%	0.2%	15.9%
Monmouthshire	100%	3.8%	61.4%	10.1%	2.3%	0.8%	5.1%	0.3%	16.3%
Newport	100%	5.7%	55.2%	11.2%	2.1%	0.9%	6.8%	0.3%	17.8%
Torfaen	100%	4.7%	58.5%	11.9%	2.2%	0.8%	7.0%	0.2%	14.6%
Cardiff	100%	9.6%	53.8%	8.3%	2.5%	1.9%	4.4%	0.2%	19.2%
Merthyr Tydfil	100%	4.7%	52.4%	11.2%	4.2%	3.7%	9.3%	0.2%	14.3%
Rhondda CynonTaff	100%	5.2%	56.9%	9.2%	2.4%	3.3%	6.6%	0.2%	16.2%
Vale of Glamorgan	100%	4.2%	62.6%	9.0%	2.1%	0.9%	5.0%	0.2%	16.0%
Carmarthenshire	100%	4.3%	55.5%	9.6%	3.3%	4.2%	9.8%	0.2%	13.0%
Ceredigion	100%	7.8%	54.4%	8.5%	3.1%	3.5%	6.6%	0.3%	15.8%
Pembrokeshire	100%	4.4%	57.2%	10.6%	3.3%	2.9%	6.6%	0.4%	14.6%
Powys	100%	3.6%	63.0%	9.3%	2.2%	3.6%	4.2%	0.2%	13.9%
Anglesey	100%	4.2%	63.4%	7.7%	1.6%	2.6%	3.9%	0.5%	16.0%
Conwy	100%	4.1%	60.1%	9.2%	2.4%	4.5%	5.4%	0.2%	14.1%
Denbighshire	100%	4.1%	54.4%	10.0%	2.9%	6.4%	7.5%	0.3%	14.4%
Flintshire	100%	3.9%	59.3%	9.7%	2.7%	4.8%	6.1%	0.2%	13.3%
Gwynedd	100%	6.5%	61.2%	7.7%	1.7%	3.8%	3.4%	0.3%	15.4%
Wrexham	100%	5.2%	59.0%	9.0%	3.0%	2.4%	7.3%	0.1%	14.0%
Bridgend	100%	4.8%	61.6%	7.8%	2.4%	3.1%	4.8%	0.2%	15.2%
Neath Port Talbot	100%	4.6%	52.2%	11.4%	2.5%	3.2%	8.0%	0.3%	17.9%
Swansea	100%	6.3%	50.3%	11.2%	2.6%	3.4%	7.8%	0.3%	18.2%
WALES³	100%	5.4%	57.2%	9.7%	2.5%	2.8%	6.3%	0.2%	16.0%

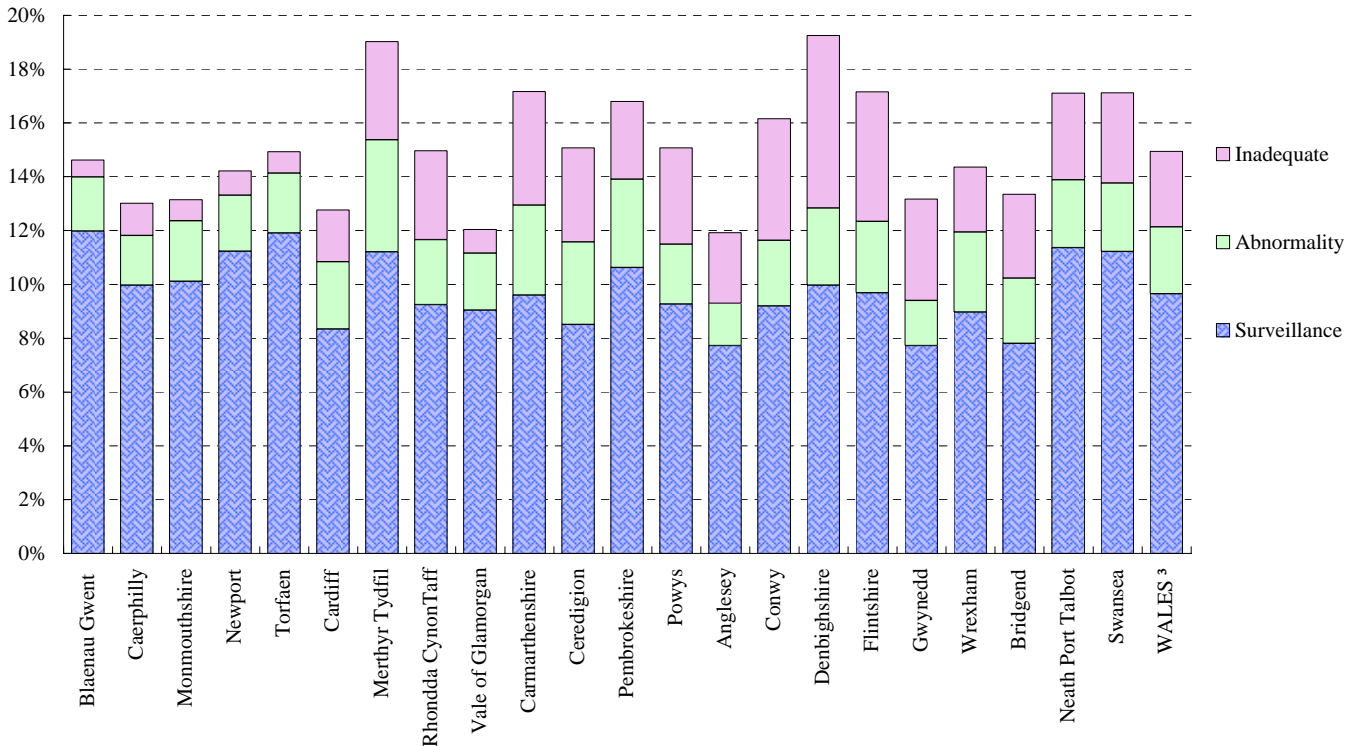
NOTES:¹ Most recent test in year² From 2003/2004, this is a new category for smears previously classed as opportunistic screening³ A small proportion of women could not be allocated to a Local Health Board, but are shown in the total for Wales.

Figure 7a: Percentage of women aged 20-64 tested, by type of invitation and Local Health Board



The total number of women (age 20-64) tested where the type of invitation was "repeat advised within 3 years" is just over 30,500 (or 15.0% of all tests). The chart below (Figure 7b) shows the different reasons for the early recall.

Figure 7b: Percentage of women aged 20-64 tested, where repeat advised within 3 years, by reason and Local Health Board



NOTES:

¹ Most recent test in year

² From 2003/2004, this is a new category for smears previously classed as opportunistic screening

³ A small proportion of women could not be allocated to a Local Health Board, but are shown in the total for Wales.

Table 8a: Number of test results^{1,2}, by age

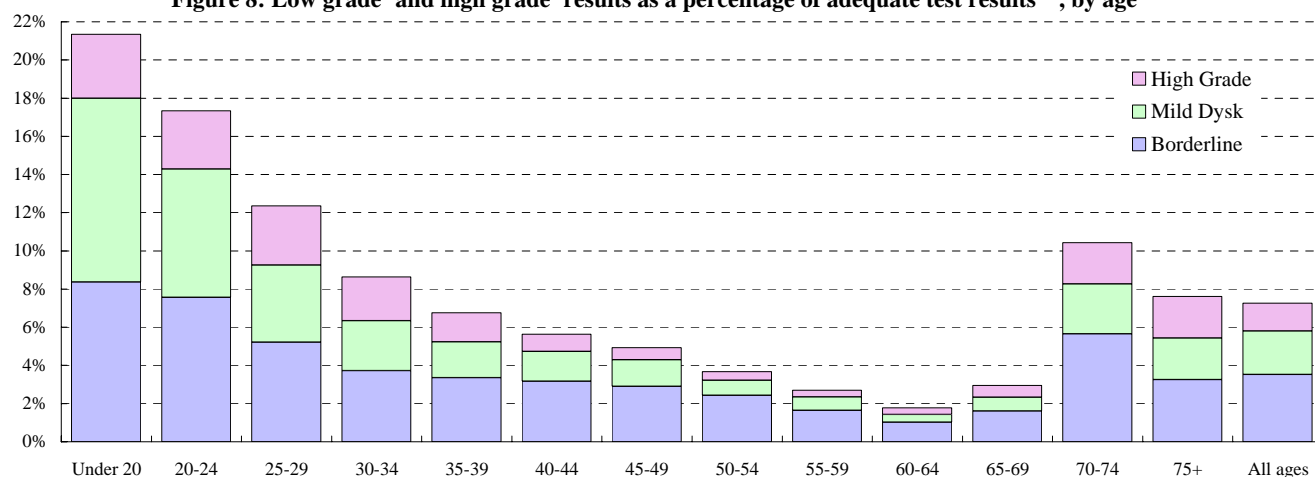
Source: KC53, part D

WALES	Total ²	Negative	Borderline	Mild dyskaryosis	Moderate dyskaryosis	Positive ³
All ages	203,305	188,557	7,167	4,630	1,610	1,341
Ages 20-64	200,435	185,837	7,094	4,582	1,596	1,326
Ages 25-64	178,950	168,078	5,468	3,139	1,144	1,121
Under 20	239	188	20	23	6	2
20-24	21,485	17,759	1,626	1,443	452	205
25-29	21,197	18,578	1,104	857	353	305
30-34	25,123	22,954	936	657	292	284
35-39	27,882	25,998	935	526	190	233
40-44	27,177	25,644	863	422	125	123
45-49	22,983	21,850	666	320	87	60
50-54	20,197	19,455	491	158	42	51
55-59	19,715	19,183	324	139	32	37
60-64	14,676	14,416	149	60	23	28
65-69	2,309	2,241	37	17	6	8
70-74	230	206	13	6	2	3
75+	92	85	3	2	-	2

Table 8b: Percentage of test results^{1,2}, by age

WALES	Total ²	Negative	Borderline	Mild dyskaryosis	Moderate dyskaryosis	Positive ³
All ages	100%	92.7%	3.5%	2.3%	0.8%	0.7%
Ages 20-64	100%	92.7%	3.5%	2.3%	0.8%	0.7%
Ages 25-64	100%	93.9%	3.1%	1.8%	0.6%	0.6%
Under 20	100%	78.7%	8.4%	9.6%	2.5%	0.8%
20-24	100%	82.7%	7.6%	6.7%	2.1%	1.0%
25-29	100%	87.6%	5.2%	4.0%	1.7%	1.4%
30-34	100%	91.4%	3.7%	2.6%	1.2%	1.1%
35-39	100%	93.2%	3.4%	1.9%	0.7%	0.8%
40-44	100%	94.4%	3.2%	1.6%	0.5%	0.5%
45-49	100%	95.1%	2.9%	1.4%	0.4%	0.3%
50-54	100%	96.3%	2.4%	0.8%	0.2%	0.3%
55-59	100%	97.3%	1.6%	0.7%	0.2%	0.2%
60-64	100%	98.2%	1.0%	0.4%	0.2%	0.2%
65-69	100%	97.1%	1.6%	0.7%	0.3%	0.3%
70-74	100%	89.6%	5.7%	2.6%	0.9%	1.3%
75+	100%	92.4%	3.3%	2.2%	0.0%	2.2%

Figure 8: Low grade⁴ and high grade⁴ results as a percentage of adequate test results^{1,2}, by age



NOTES:

¹ Most severe result in year

² Excluding those women whose tests during the year were classified as 'inadequate'

³ 'Positive' includes results reported as 'severe dyskaryosis', 'severe dyskaryosis/?invasive carcinoma', or '?glandular neoplasia';

⁴ 'Low grade' results are 'borderline' or 'mild dyskaryosis' whilst 'High grade' results are 'moderate dyskaryosis' or 'positive'

Table 9a: Number of test results¹, of women aged 20-64, by Local Health Board (LHB)

Source: KC53, part D

Local Health Board	Total ²	Negative	Borderline	Mild dyskaryosis	Moderate dyskaryosis	Positive ³
Blaenau Gwent	4,969	4,651	130	120	39	29
Caerphilly	13,661	12,730	366	338	127	100
Monmouthshire	6,253	5,886	178	111	38	40
Newport	9,857	9,122	302	268	98	67
Torfaen	6,688	6,178	191	202	69	48
Cardiff	22,607	20,940	932	373	124	238
Merthyr Tydfil	3,779	3,248	247	204	45	35
Rhondda CynonTaff	15,612	14,400	505	425	144	138
Vale of Glamorgan	8,191	7,659	279	119	57	77
Carmarthenshire	10,314	9,427	263	481	99	44
Ceredigion	5,750	5,359	127	200	41	23
Pembrokeshire	7,424	6,828	325	175	72	24
Powys	8,261	7,667	342	161	58	33
Anglesey	3,931	3,733	95	55	30	18
Conwy	7,023	6,658	196	100	32	37
Denbighshire	6,575	6,192	213	91	41	38
Flintshire	9,614	8,932	345	236	59	42
Gwynedd	7,427	7,026	204	110	41	46
Wrexham	8,682	8,041	333	212	55	41
Bridgend	9,233	8,548	416	141	79	49
Neath Port Talbot	8,563	7,906	361	136	90	70
Swansea	14,722	13,510	692	290	145	85
WALES⁵	200,435	185,837	7,094	4,582	1,596	1,326

Table 9b: Percentage of test results¹, of women aged 20-64, by Local Health Board (LHB)

Local Health Board	Total ²	Negative	Borderline	Mild dyskaryosis	Moderate dyskaryosis	Positive ³
Blaenau Gwent	100%	93.6%	2.6%	2.4%	0.8%	0.6%
Caerphilly	100%	93.2%	2.7%	2.5%	0.9%	0.7%
Monmouthshire	100%	94.1%	2.8%	1.8%	0.6%	0.6%
Newport	100%	92.5%	3.1%	2.7%	1.0%	0.7%
Torfaen	100%	92.4%	2.9%	3.0%	1.0%	0.7%
Cardiff	100%	92.6%	4.1%	1.6%	0.5%	1.1%
Merthyr Tydfil	100%	85.9%	6.5%	5.4%	1.2%	0.9%
Rhondda CynonTaff	100%	92.2%	3.2%	2.7%	0.9%	0.9%
Vale of Glamorgan	100%	93.5%	3.4%	1.5%	0.7%	0.9%
Carmarthenshire	100%	91.4%	2.5%	4.7%	1.0%	0.4%
Ceredigion	100%	93.2%	2.2%	3.5%	0.7%	0.4%
Pembrokeshire	100%	92.0%	4.4%	2.4%	1.0%	0.3%
Powys	100%	92.8%	4.1%	1.9%	0.7%	0.4%
Anglesey	100%	95.0%	2.4%	1.4%	0.8%	0.5%
Conwy	100%	94.8%	2.8%	1.4%	0.5%	0.5%
Denbighshire	100%	94.2%	3.2%	1.4%	0.6%	0.6%
Flintshire	100%	92.9%	3.6%	2.5%	0.6%	0.4%
Gwynedd	100%	94.6%	2.7%	1.5%	0.6%	0.6%
Wrexham	100%	92.6%	3.8%	2.4%	0.6%	0.5%
Bridgend	100%	92.6%	4.5%	1.5%	0.9%	0.5%
Neath Port Talbot	100%	92.3%	4.2%	1.6%	1.1%	0.8%
Swansea	100%	91.8%	4.7%	2.0%	1.0%	0.6%
WALES⁵	100%	92.7%	3.5%	2.3%	0.8%	0.7%

NOTES:¹ Most severe result in year² Excluding those women whose tests during the year were classified as 'inadequate'³ 'Positive' includes results reported as 'severe dyskaryosis', 'severe dyskaryosis/?invasive carcinoma', or '?glandular neoplasia';⁴ 'Low grade' results are 'borderline' or 'mild dyskaryosis' whilst 'High grade' results are 'moderate dyskaryosis' or 'positive'⁵ A small proportion of women could not be allocated to a Local Health Board, but are shown in the total for Wales.

Table 10: Number of smears examined, by pathology laboratories and source of smear

Source: KC61, part A

Laboratory		Total	NHS			Private	Other
			GP	community clinic	GUM clinic		
Bronglais	Total smears	289	-	-	-	289	-
	No. inadequate	24	-	-	-	24	-
	% inadequate	8.3%	0.0%	0.0%	0.0%	8.3%	0.0%
	No. adequate	265	-	-	-	265	-
	No. high grade ²	2	-	-	-	2	-
	% high grade ¹	0.8%	0.0%	0.0%	0.0%	0.8%	0.0%
Glan Clwyd	Total smears	13,945	12,435	829	30	651	-
	No. inadequate	1,142	1,010	82	2	48	-
	% inadequate	8.2%	8.1%	9.9%	6.7%	7.4%	0.0%
	No. adequate	12,803	11,425	747	28	603	-
	No. high grade ²	137	117	8	-	12	-
	% high grade ¹	1.1%	1.0%	1.1%	0.0%	2.0%	0.0%
Gwynedd	Total smears	15,692	13,138	1,441	7	1,073	2
	No. inadequate	1,388	1,156	128	-	99	-
	% inadequate	8.8%	8.8%	8.9%	0.0%	9.2%	0.0%
	No. adequate	14,304	11,982	1,313	7	974	2
	No. high grade ²	157	119	15	1	22	-
	% high grade ¹	1.1%	1.0%	1.1%	14.3%	2.3%	0.0%
Llandough	Total smears	34,259	29,527	1,419	545	2,758	2
	No. inadequate	1,083	917	46	19	100	-
	% inadequate	3.2%	3.1%	3.2%	3.5%	3.6%	0.0%
	No. adequate	33,176	28,610	1,373	526	2,658	2
	No. high grade ²	707	304	20	11	372	-
	% high grade ¹	2.1%	1.1%	1.5%	2.1%	14.0%	0.0%
Prince Charles	Total smears	9,287	6,314	1,833	-	1,140	-
	No. inadequate	817	541	167	-	109	-
	% inadequate	8.8%	8.6%	9.1%	0.0%	9.6%	0.0%
	No. adequate	8,470	5,773	1,666	-	1,031	-
	No. high grade ²	166	97	28	-	41	-
	% high grade ¹	2.0%	1.7%	1.7%	0.0%	4.0%	0.0%
Princess of Wales	Total smears	10,332	8,628	1,045	24	630	-
	No. inadequate	795	645	97	-	53	-
	% inadequate	7.7%	7.5%	9.3%	0.0%	8.4%	0.0%
	No. adequate	9,537	7,983	948	24	577	-
	No. high grade ²	129	83	10	-	34	-
	% high grade ¹	1.4%	1.0%	1.1%	0.0%	5.9%	0.0%
Royal Glamorgan	Total smears	20,659	18,095	1,526	74	947	17
	No. inadequate	1,146	1,073	53	1	19	-
	% inadequate	5.5%	5.9%	3.5%	1.4%	2.0%	0.0%
	No. adequate	19,513	17,022	1,473	73	928	17
	No. high grade ²	405	229	19	1	155	1
	% high grade ¹	2.1%	1.3%	1.3%	1.4%	16.7%	5.9%

NOTES:¹ % high grade of all adequate results² 'High grade' includes results reported as 'moderate dyskaryosis', 'severe dyskaryosis', 'severe dyskaryosis/?invasive carcinoma', or '?glandular neoplasia'

Table 10: Number of smears examined, by pathology laboratories and source of smear (continued)

Source: KC61, part A

Laboratory		Total	Source of smear					Private	Other
			GP	NHS community clinic	GUM clinic	NHS hospital			
Royal Gwent	Total smears	33,074	27,084	2,719	4	3,267	-	-	
	No. inadequate	529	364	51	1	113	-	-	
	% inadequate	1.6%	1.3%	1.9%	25.0%	3.5%	0.0%	0.0%	
	No. adequate	32,545	26,720	2,668	3	3,154	-	-	
	No. high grade ²	528	335	42	-	151	-	-	
	% high grade ¹	1.6%	1.3%	1.6%	0.0%	4.8%	0.0%	0.0%	
Swansea	Total smears	25,931	21,424	1,372	44	3,089	2	-	
	No. inadequate	2,080	1,805	105	7	163	-	-	
	% inadequate	8.0%	8.4%	7.7%	15.9%	5.3%	0.0%	0.0%	
	No. adequate	23,851	19,619	1,267	37	2,926	2	-	
	No. high grade ²	481	262	25	-	194	-	-	
	% high grade ¹	2.0%	1.3%	2.0%	0.0%	6.6%	0.0%	0.0%	
West Wales	Total smears	17,764	14,769	1,325	3	1,666	1	-	
	No. inadequate	1,688	1,443	148	-	97	-	-	
	% inadequate	9.5%	9.8%	11.2%	0.0%	5.8%	0.0%	0.0%	
	No. adequate	16,076	13,326	1,177	3	1,569	1	-	
	No. high grade ²	220	129	15	-	76	-	-	
	% high grade ¹	1.4%	1.0%	1.3%	0.0%	4.8%	0.0%	0.0%	
Withybush	Total smears	8,128	7,015	411	1	701	-	-	
	No. inadequate	497	438	27	-	32	-	-	
	% inadequate	6.1%	6.2%	6.6%	0.0%	4.6%	0.0%	0.0%	
	No. adequate	7,631	6,577	384	1	669	-	-	
	No. high grade ²	97	65	6	-	26	-	-	
	% high grade ¹	1.3%	1.0%	1.6%	0.0%	3.9%	0.0%	0.0%	
Wrexham Maelor	Total smears	13,791	11,200	1,597	19	938	26	11	
	No. inadequate	567	464	65	1	35	-	2	
	% inadequate	4.1%	4.1%	4.1%	5.3%	3.7%	0.0%	18.2%	
	No. adequate	13,224	10,736	1,532	18	903	26	9	
	No. high grade ²	127	97	5	-	24	1	-	
	% high grade ¹	1.0%	0.9%	0.3%	0.0%	2.7%	3.8%	0.0%	
Shrewsbury	Total smears	4,692	4,326	195	1	166	4	-	
	No. inadequate	526	489	21	-	16	-	-	
	% inadequate	11.2%	11.3%	10.8%	0.0%	9.6%	0.0%	0.0%	
	No. adequate	4,166	3,837	174	1	150	4	-	
	No. high grade ²	61	50	3	1	7	-	-	
	% high grade ¹	1.5%	1.3%	1.7%	100.0%	4.7%	0.0%	0.0%	
WALES	Total smears	207,843	173,955	15,712	752	17,315	54	55	
	No. inadequate	12,282	10,345	990	31	908	-	8	
	% inadequate	5.9%	5.9%	6.3%	4.1%	5.2%	0.0%	14.5%	
	No. adequate	195,561	163,610	14,722	721	16,407	54	47	
	No. high grade ²	3,217	1,887	196	14	1,116	2	2	
	% high grade ¹	1.6%	1.2%	1.3%	1.9%	6.8%	3.7%	4.3%	

NOTES:¹ % high grade of all adequate results² 'High grade' includes results reported as 'moderate dyskaryosis', 'severe dyskaryosis', 'severe dyskaryosis/?invasive carcinoma', or '?glandular neoplasia'

Figure 10a: Percentage of inadequate smears, by laboratory

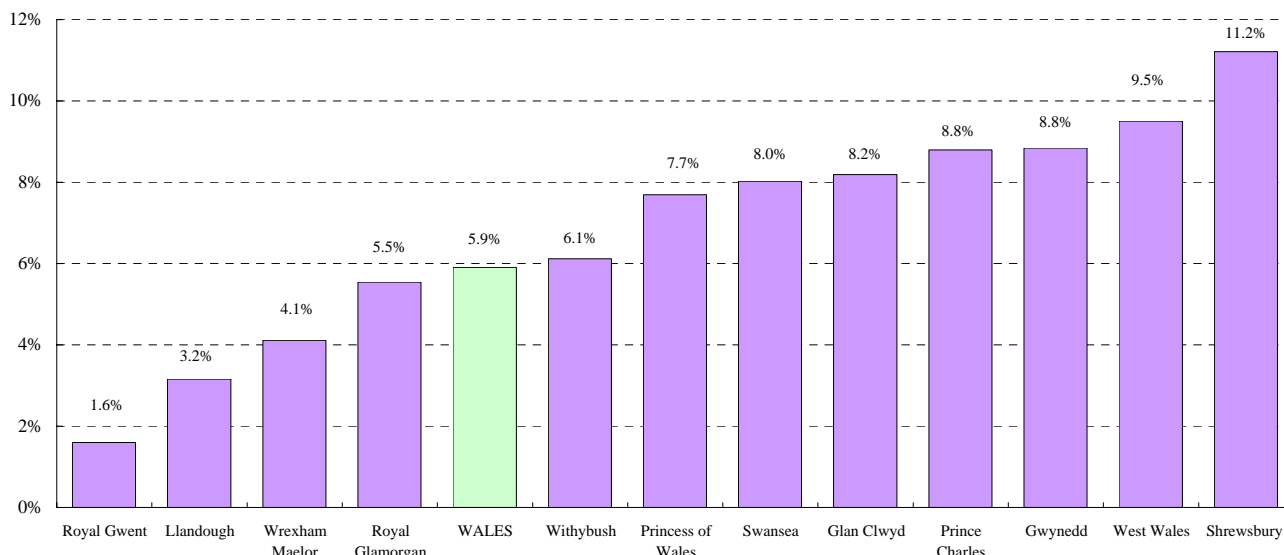


Figure 10b: Percentage of high grade smears^{1,2}, by laboratory

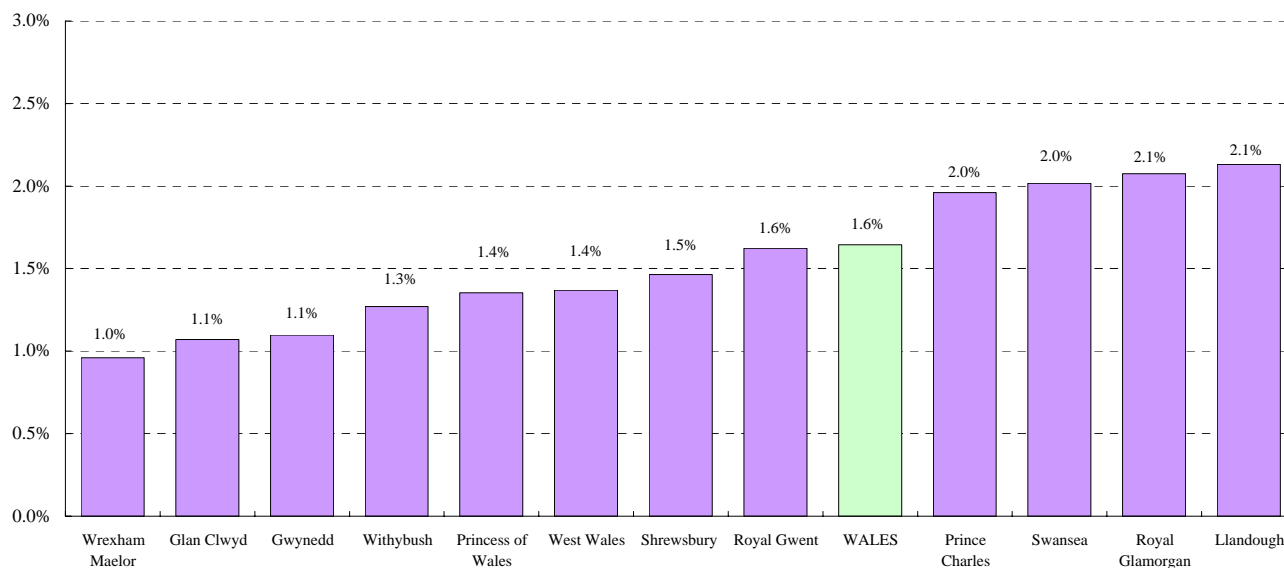
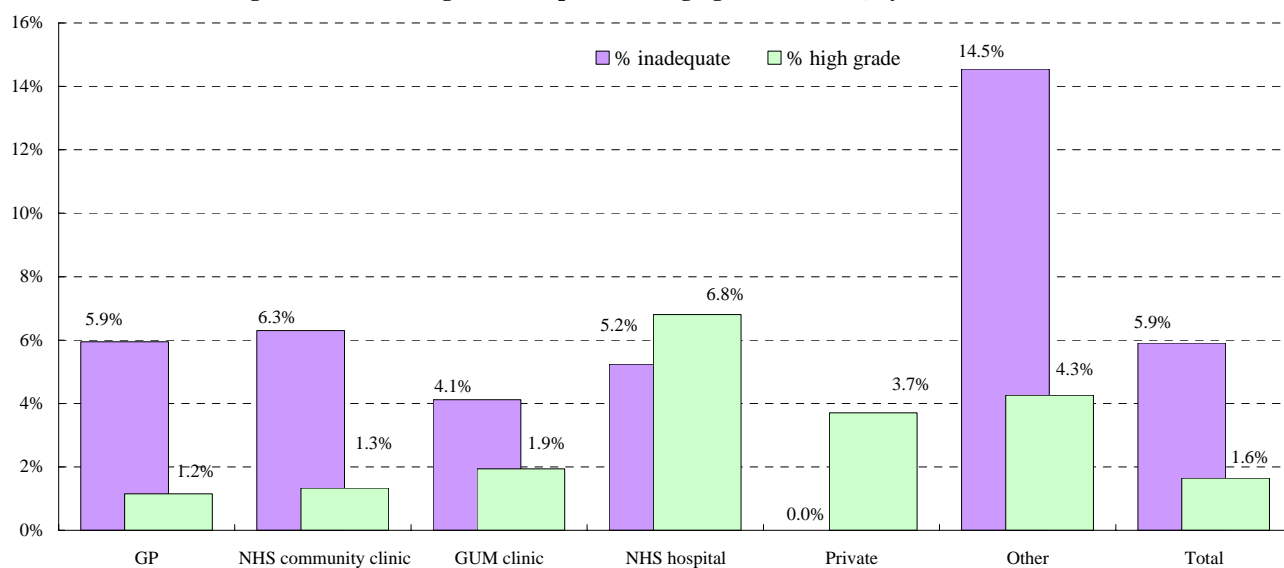


Figure 10c: Percentage of inadequate and high grade smears^{1,2}, by source of smear



NOTES:

¹ % high grade of all adequate results

² 'High grade' includes results reported as 'moderate dyskaryosis', 'severe dyskaryosis', 'severe dyskaryosis/?invasive carcinoma', or '?glandular neoplasia'

Table 11a: Result of test¹, by laboratory

Source: KC61, part B

Laboratory	Total		Borderline changes	Mild dyskaryosis	Moderate dyskaryosis	Severe dyskaryosis	Severe dyskaryosis	
	adequate smears	Negative					/?Invasive carcinoma	?Glandular neoplasia
Glan Clwyd	12,172	11,463	403	181	66	55	2	2
Gwynedd	13,295	12,587	372	202	69	55	3	7
Llandough	29,983	27,982	1,252	425	120	178	15	11
Prince Charles	7,439	6,437	517	360	74	49	1	1
Princess of Wales	8,931	8,300	411	127	55	30	1	7
Royal Glamorgan	18,495	17,503	390	354	133	104	3	8
Royal Gwent	29,388	27,522	787	702	203	156	3	15
Swansea	20,886	19,279	963	357	177	98	6	6
West Wales	14,503	13,452	321	586	94	41	1	8
Withybush	6,961	6,421	317	152	52	19	-	-
Wrexham	12,268	11,368	534	264	55	37	3	7
Shrewsbury	4,011	3,696	191	71	29	15	1	8
WALES	178,332	166,010	6,458	3,781	1,127	837	39	80

Table 11b: Result (as percentage of total adequate test)¹ by laboratory

Laboratory	Total		Borderline changes	Mild dyskaryosis	Moderate dyskaryosis	Severe dyskaryosis	Severe dyskaryosis	
	adequate smears	Negative					/?Invasive carcinoma	?Glandular neoplasia
Glan Clwyd	100%	94.2%	3.3%	1.5%	0.5%	0.5%	0.0%	0.0%
Gwynedd	100%	94.7%	2.8%	1.5%	0.5%	0.4%	0.0%	0.1%
Llandough	100%	93.3%	4.2%	1.4%	0.4%	0.6%	0.1%	0.0%
Prince Charles	100%	86.5%	6.9%	4.8%	1.0%	0.7%	0.0%	0.0%
Princess of Wales	100%	92.9%	4.6%	1.4%	0.6%	0.3%	0.0%	0.1%
Royal Glamorgan	100%	94.6%	2.1%	1.9%	0.7%	0.6%	0.0%	0.0%
Royal Gwent	100%	93.7%	2.7%	2.4%	0.7%	0.5%	0.0%	0.1%
Swansea	100%	92.3%	4.6%	1.7%	0.8%	0.5%	0.0%	0.0%
West Wales	100%	92.8%	2.2%	4.0%	0.6%	0.3%	0.0%	0.1%
Withybush	100%	92.2%	4.6%	2.2%	0.7%	0.3%	0.0%	0.0%
Wrexham	100%	92.7%	4.4%	2.2%	0.4%	0.3%	0.0%	0.1%
Shrewsbury	100%	92.1%	4.8%	1.8%	0.7%	0.4%	0.0%	0.2%
WALES	100%	93.1%	3.6%	2.1%	0.6%	0.5%	0.0%	0.0%

NOTES:¹ Results of smears from GP and NHS community clinics only

Figure 11a: Result of test¹, by laboratory

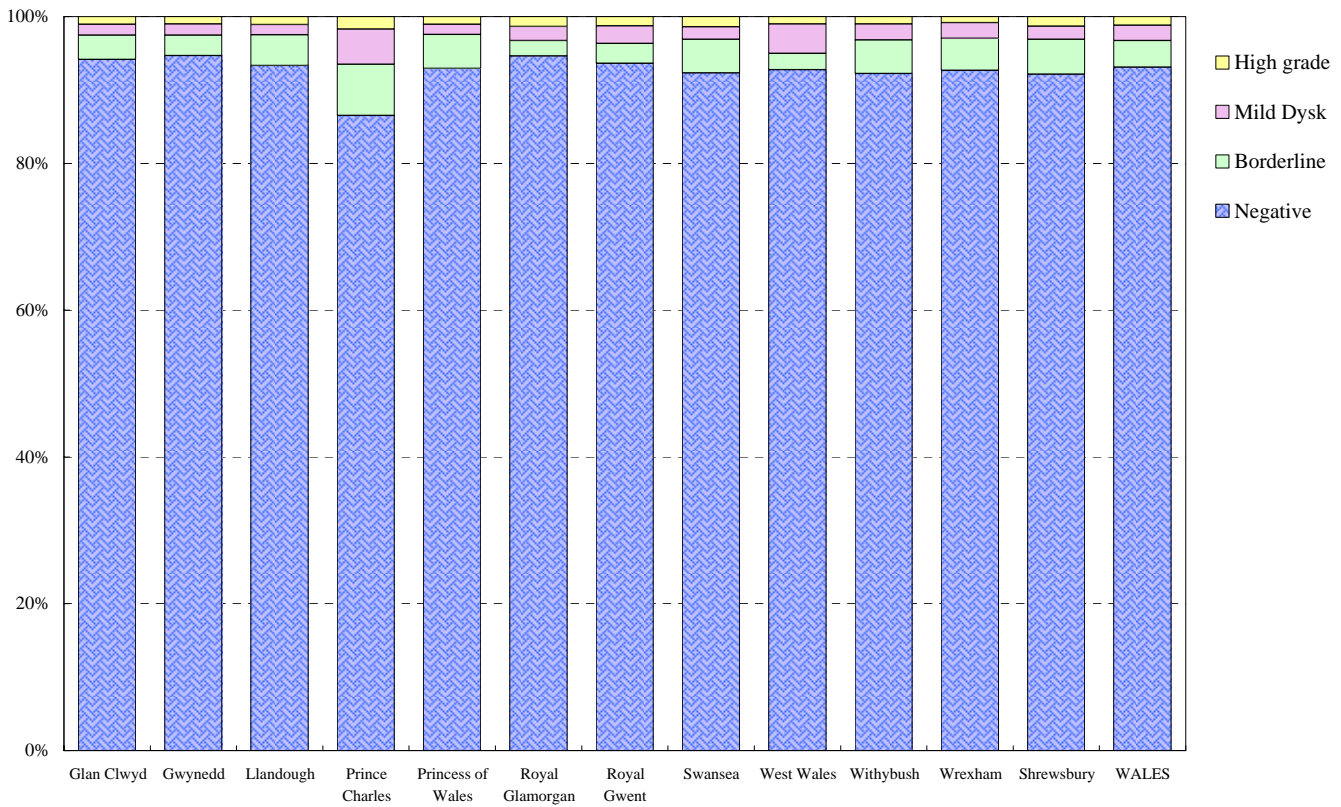
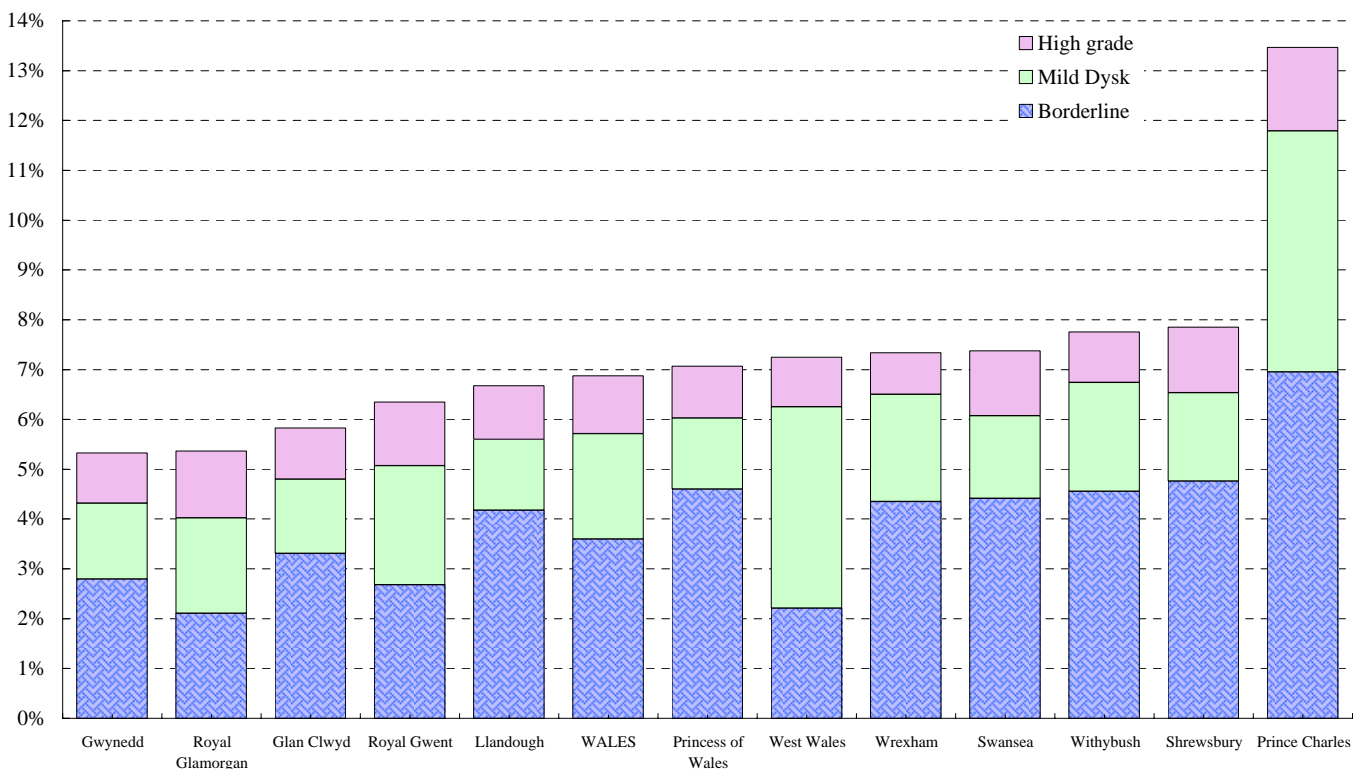


Figure 11b: Low grade² and high grade³ results as a percentage of adequate smears⁴, by laboratory



NOTES:

¹ Results of smears examined from GP and NHS community clinics only

² 'Low grade' results are 'borderline' or 'mild dyskaryosis' whilst 'High grade' results are 'moderate dyskaryosis' or worse

³ 'High grade' includes results reported as 'moderate dyskaryosis', 'severe dyskaryosis', 'severe dyskaryosis/?invasive carcinoma', or '?glandular neoplasia'

Table 12a: Number of adequate smears examined by pathology laboratories¹, by result of test and age.

Source: KC61, part B

Results of tests	Total ²	Under 20	20-24	25-29	30-34	35-39	40-44	45-49	50-54	55-59	60-64	65+
Negative	166,004	293	17,005	16,142	20,416	23,153	22,257	19,196	17,089	16,951	12,337	1,165
Borderline changes	6,457	28	1,592	923	818	830	770	626	444	274	126	26
Mild dyskaryosis	3,781	33	1,319	640	519	430	338	241	123	92	34	12
Moderate dyskaryosis	1,127	5	337	245	189	134	91	54	36	15	17	4
Severe dyskaryosis	837	1	155	185	196	138	69	31	34	19	9	-
?Invasive carcinoma	39	1	2	6	9	4	9	2	5	-	-	1
?Glandular neoplasia	80	-	4	4	13	13	6	6	13	8	11	2
TOTAL	178,325	361	20,414	18,145	22,160	24,702	23,540	20,156	17,744	17,359	12,534	1,210

Table 12b: Percentage of adequate smears examined by pathology laboratories¹, by result of test and age.

Source: KC61, part B

Results of tests	Total ²	Under 20	20-24	25-29	30-34	35-39	40-44	45-49	50-54	55-59	60-64	65+
Negative	93.1%	81.2%	83.3%	89.0%	92.1%	93.7%	94.5%	95.2%	96.3%	97.6%	98.4%	96.3%
Borderline changes	3.6%	7.8%	7.8%	5.1%	3.7%	3.4%	3.3%	3.1%	2.5%	1.6%	1.0%	2.1%
Mild dyskaryosis	2.1%	9.1%	6.5%	3.5%	2.3%	1.7%	1.4%	1.2%	0.7%	0.5%	0.3%	1.0%
Moderate dyskaryosis	0.6%	1.4%	1.7%	1.4%	0.9%	0.5%	0.4%	0.3%	0.2%	0.1%	0.1%	0.3%
Severe dyskaryosis	0.5%	0.3%	0.8%	1.0%	0.9%	0.6%	0.3%	0.2%	0.2%	0.1%	0.1%	0.0%
?Invasive carcinoma	0.0%	0.3%	0.0%	0.0%	0.0%	0.0%	0.0%	0.0%	0.0%	0.0%	0.0%	0.1%
?Glandular neoplasia	0.0%	0.0%	0.0%	0.0%	0.1%	0.1%	0.0%	0.0%	0.1%	0.0%	0.1%	0.2%
TOTAL	100.0%	100.0%	100.0%	100.0%	100.0%	100.0%	100.0%	100.0%	100.0%	100.0%	100.0%	100.0%

Figure 12a: Abnormal smears, by age and result

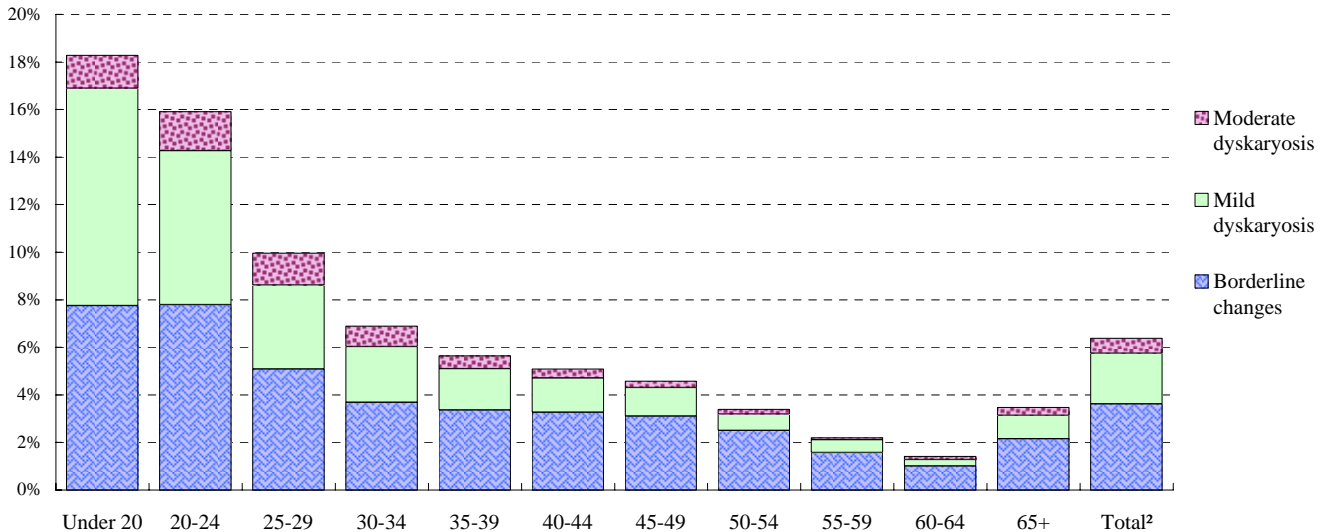
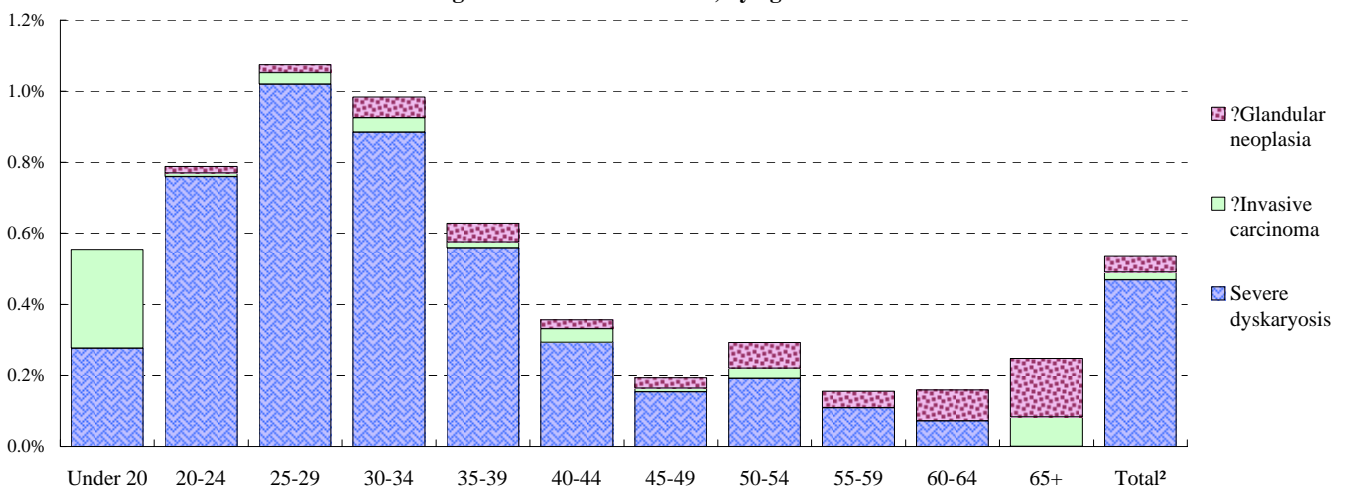


Figure 12b: Positive smears, by age and result



NOTES:

¹ Results of smears examined from GP and NHS community clinics only

² 7 Ages not known (1 negative in Swansea, 1 borderline in Princess of Wales, 1 negative in Shrewsbury, 1 negative in Royal Glamorgan

1 negative in Wrexham, 2 negatives in Glan Clwyd) not included in the total.

Table 13a: Number of inadequate smears, by age and laboratory¹

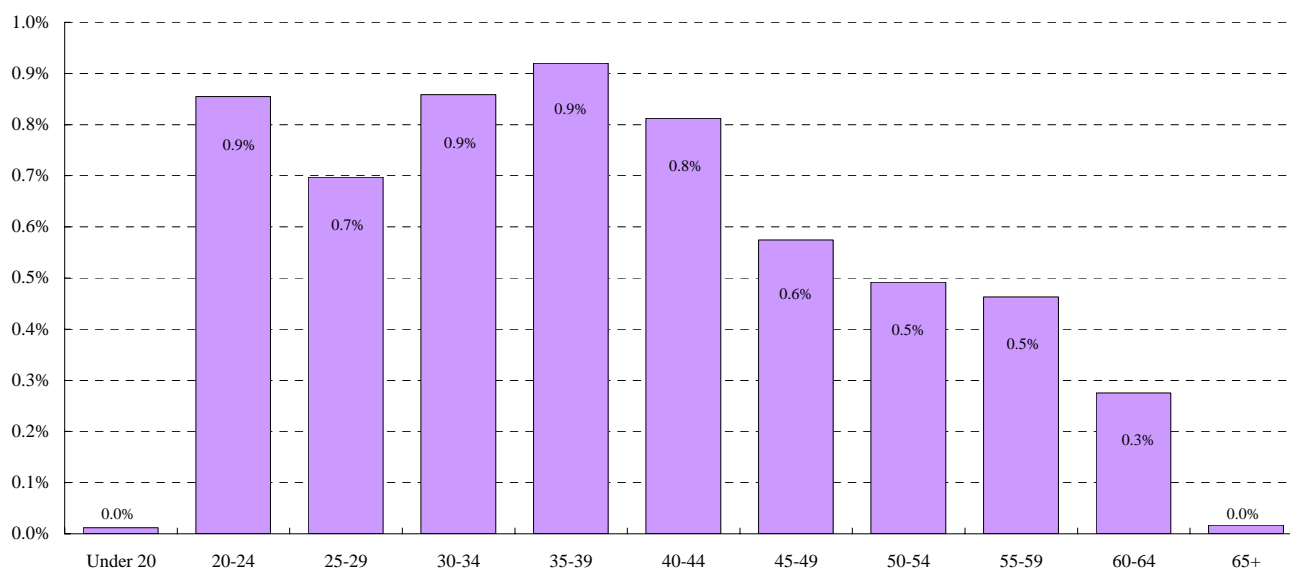
Source: KC61, part B

Laboratory	Total ³ inadequate smears											
	Under 20	20-24	25-29	30-34	35-39	40-44	45-49	50-54	55-59	60-64	65+	
Glan Clwyd	-	143	121	163	149	145	105	122	93	49	2	
Gwynedd	6	185	130	199	181	141	143	108	109	79	3	
Llandough	4	171	153	132	129	135	79	72	48	38	2	
Prince Charles	2	84	84	113	112	103	69	57	58	24	2	
Princess of Wales	-	78	80	129	120	108	65	59	57	43	3	
Royal Glamorgan	1	163	133	174	190	127	111	88	88	47	4	
Royal Gwent	1	36	44	51	64	53	40	39	51	34	2	
Swansea	3	304	230	242	281	248	193	151	154	97	7	
West Wales	2	243	189	188	266	259	142	127	110	60	5	
Withybush	3	86	53	77	74	56	44	32	27	13	-	
Wrexham	-	72	57	84	91	70	52	39	48	15	1	
Shrewsbury	1	56	48	77	88	96	46	39	35	23	1	
TOTAL	23	1,621	1,322	1,629	1,745	1,541	1,089	933	878	522	32	

Table 13b: Inadequate smears as a percentage³ of total smears, by age and laboratory

Laboratory	Total ³	Under 20	20-24	25-29	30-34	35-39	40-44	45-49	50-54	55-59	60-64	65+
Glan Clwyd	8.2%	0.0%	1.1%	0.9%	1.2%	1.1%	1.1%	0.8%	0.9%	0.7%	0.4%	0.0%
Gwynedd	8.8%	0.0%	1.3%	0.9%	1.4%	1.2%	1.0%	1.0%	0.7%	0.7%	0.5%	0.0%
Llandough	3.1%	0.0%	0.6%	0.5%	0.4%	0.4%	0.4%	0.3%	0.2%	0.2%	0.1%	0.0%
Prince Charles	8.7%	0.0%	1.0%	1.0%	1.4%	1.4%	1.3%	0.8%	0.7%	0.7%	0.3%	0.0%
Princess of Wales	7.7%	0.0%	0.8%	0.8%	1.3%	1.2%	1.1%	0.7%	0.6%	0.6%	0.4%	0.0%
Royal Glamorgan	5.7%	0.0%	0.8%	0.7%	0.9%	1.0%	0.6%	0.6%	0.4%	0.4%	0.2%	0.0%
Royal Gwent	1.4%	0.0%	0.1%	0.1%	0.2%	0.2%	0.2%	0.1%	0.1%	0.2%	0.1%	0.0%
Swansea	8.4%	0.0%	1.3%	1.0%	1.1%	1.2%	1.1%	0.8%	0.7%	0.7%	0.4%	0.0%
West Wales	9.9%	0.0%	1.5%	1.2%	1.2%	1.7%	1.6%	0.9%	0.8%	0.7%	0.4%	0.0%
Withybush	6.3%	0.0%	1.2%	0.7%	1.0%	1.0%	0.8%	0.6%	0.4%	0.4%	0.2%	0.0%
Wrexham	4.1%	0.0%	0.6%	0.4%	0.7%	0.7%	0.5%	0.4%	0.3%	0.4%	0.1%	0.0%
Shrewsbury	11.3%	0.0%	1.2%	1.1%	1.7%	1.9%	2.1%	1.0%	0.9%	0.8%	0.5%	0.0%
TOTAL³	6.0%	0.0%	0.9%	0.7%	0.9%	0.9%	0.8%	0.6%	0.5%	0.5%	0.3%	0.0%

Figure 13 : Inadequate smears as a percentage³ of total smears, by age



NOTES:

¹ Results of smears examined from GP and NHS community clinics only

² There are no 'Age not knows'

³ Percentage of known ages

Table 14a: Outcome for women recommended for gynaecological referral during April 2003 - March 2004

Source: KC61, Part C

Women referred following smear results: inadequate/borderline/mild dyskaryosis (ie HMR 101/5, category 1/8/3 results)

Number of women

Laboratory	Total	Adeno-carcinoma					HPV only	No CIN/ No HPV	Inadequate biopsy	Colposcopy		Result not known
		Cancer	in-situ	CIN 3	CIN 2	CIN 1				NAD - no biopsy taken	Result known	
Glan Clwyd	329	2	-	15	23	42	25	160	4	54	4	
Gwynedd	156	1	-	26	21	37	11	13	5	42	-	
Llandough	451	1	2	57	39	44	96	133	23	53	3	
Prince Charles	274	1	-	10	15	59	72	83	6	27	1	
Princess of Wales	153	1	-	10	19	14	26	22	2	57	2	
Royal Glamorgan	277	1	2	17	20	51	29	63	11	80	3	
Royal Gwent	670	2	-	63	127	160	75	55	20	166	2	
Swansea	580	2	2	45	57	94	49	181	3	145	2	
West Wales	572	1	1	29	38	119	76	99	21	188	-	
Withybush	159	-	-	8	13	74	21	24	-	19	-	
Wrexham	259	1	-	18	42	58	4	49	5	81	1	
TOTAL	3,880	13	7	298	414	752	484	882	100	912	18	

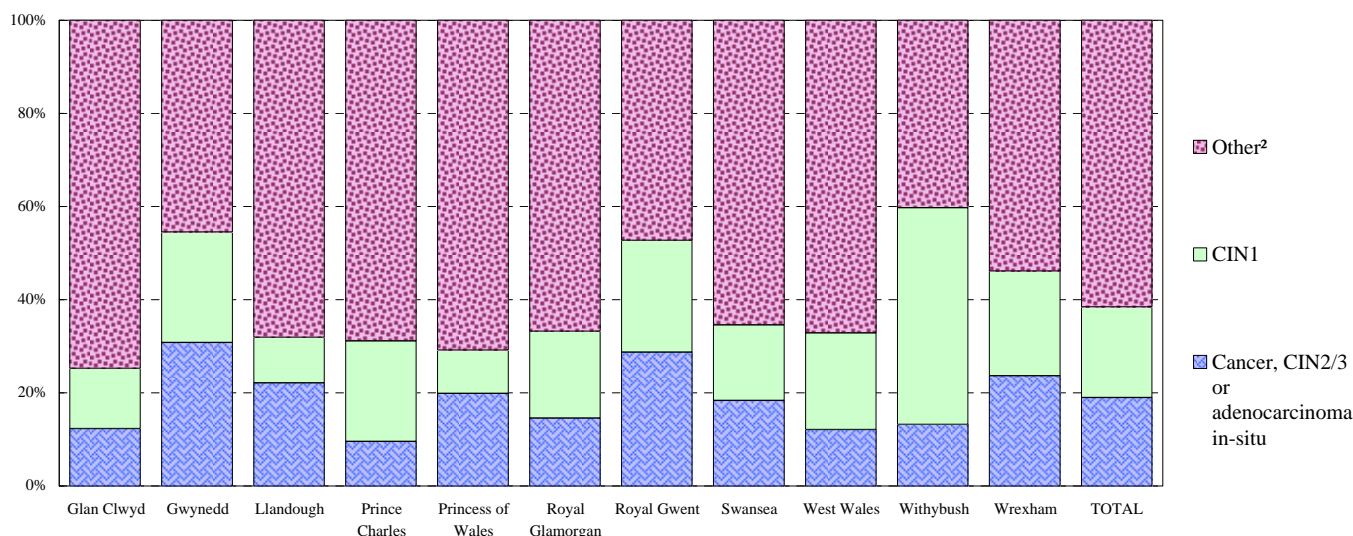
Table 14b: Outcome for women recommended for gynaecological referral during April 2003 - March 2004

Women referred following smear results: inadequate/borderline/mild dyskaryosis (ie HMR 101/5, category 1/8/3 results)

Percentage of cases with known result

Laboratory	Total with known result	Adeno-carcinoma					HPV only	No CIN/ No HPV	Inadequate biopsy	Colposcopy		Result not known ¹
		Cancer	in-situ	CIN 3	CIN 2	CIN 1				NAD - no biopsy taken	Result known ¹	
Glan Clwyd	100%	0.6%	0.0%	4.6%	7.1%	12.9%	7.7%	49.2%	1.2%	16.6%	1.2%	
Gwynedd	100%	0.6%	0.0%	16.7%	13.5%	23.7%	7.1%	8.3%	3.2%	26.9%	0.0%	
Llandough	100%	0.2%	0.4%	12.7%	8.7%	9.8%	21.4%	29.7%	5.1%	11.8%	0.7%	
Prince Charles	100%	0.4%	0.0%	3.7%	5.5%	21.6%	26.4%	30.4%	2.2%	9.9%	0.4%	
Princess of Wales	100%	0.7%	0.0%	6.6%	12.6%	9.3%	17.2%	14.6%	1.3%	37.7%	1.3%	
Royal Glamorgan	100%	0.4%	0.7%	6.2%	7.3%	18.6%	10.6%	23.0%	4.0%	29.2%	1.1%	
Royal Gwent	100%	0.3%	0.0%	9.4%	19.0%	24.0%	11.2%	8.2%	3.0%	24.9%	0.3%	
Swansea	100%	0.3%	0.3%	7.8%	9.9%	16.3%	8.5%	31.3%	0.5%	25.1%	0.3%	
West Wales	100%	0.2%	0.2%	5.1%	6.6%	20.8%	13.3%	17.3%	3.7%	32.9%	0.0%	
Withybush	100%	0.0%	0.0%	5.0%	8.2%	46.5%	13.2%	15.1%	0.0%	11.9%	0.0%	
Wrexham	100%	0.4%	0.0%	7.0%	16.3%	22.5%	1.6%	19.0%	1.9%	31.4%	0.4%	
TOTAL	100%	0.3%	0.2%	7.7%	10.7%	19.5%	12.5%	22.8%	2.6%	23.6%	0.5%	

Figure 14a: Outcome of referral - following smear results of inadequate, borderline or mild dyskaryosis



NOTES:

¹ as percentage of total results (ie 'known' and 'not known')

² Other = 'HPV only', 'No CIN/No HPV', 'Inadequate biopsy', and 'Colposcopy NAD - no biopsy taken'

Table 14c: Outcome for women recommended for gynaecological referral during April 2003 - March 2004

Source: KC61, part C

Women referred following smear results: moderate dyskaryosis or worse, (ie HMR 101/5, category 7/4/5/6 results)

Number of women

Laboratory	Total	Cancer	Adeno-carcinoma				HPV only	No CIN/ No HPV	Inadequate biopsy	Colposcopy NAD - no biopsy taken	Result not known
			in-situ	CIN 3	CIN 2	CIN 1					
Glan Clwyd	149	4	2	49	37	13	7	28	-	8	1
Gwynedd	132	8	3	68	24	15	3	5	-	6	-
Llandough	342	8	10	202	61	14	16	23	1	7	-
Prince Charles	137	1	-	62	28	21	11	12	-	2	-
Princess of Wales	82	5	5	44	12	3	1	10	-	2	-
Royal Glamorgan	282	3	7	112	55	18	6	29	4	46	2
Royal Gwent	491	9	3	269	118	46	9	10	6	19	2
Swansea	384	17	1	161	73	42	10	46	4	30	-
West Wales	210	6	3	73	52	30	21	12	-	13	-
Withybush	99	4	3	46	30	12	-	1	-	3	-
Wrexham	105	2	3	52	22	7	-	11	2	6	-
TOTAL	2,413	67	40	1,138	512	221	84	187	17	142	5

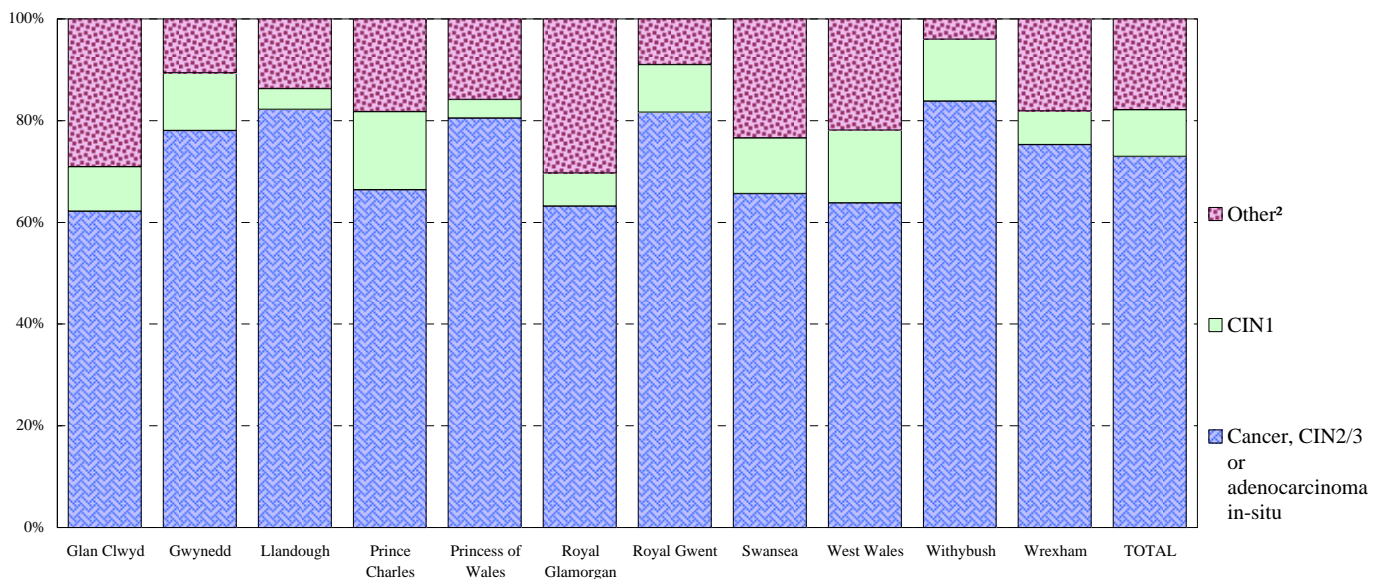
Table 14d: Outcome for women recommended for gynaecological referral during April 2003 - March 2004

Women referred following smear results: moderate dyskaryosis or worse, (ie HMR 101/5, category 7/4/5/6 results)

Percentage of cases with known result

Laboratory	Total with known result	Cancer	Adeno-carcinoma				HPV only	No CIN/ No HPV	Inadequate biopsy	Colposcopy NAD - no biopsy taken	Result not known ¹
			in-situ	CIN 3	CIN 2	CIN 1					
Glan Clwyd	100%	2.7%	1.4%	33.1%	25.0%	8.8%	4.7%	18.9%	0.0%	5.4%	0.7%
Gwynedd	100%	6.1%	2.3%	51.5%	18.2%	11.4%	2.3%	3.8%	0.0%	4.5%	0.0%
Llandough	100%	2.3%	2.9%	59.1%	17.8%	4.1%	4.7%	6.7%	0.3%	2.0%	0.0%
Prince Charles	100%	0.7%	0.0%	45.3%	20.4%	15.3%	8.0%	8.8%	0.0%	1.5%	0.0%
Princess of Wales	100%	6.1%	6.1%	53.7%	14.6%	3.7%	1.2%	12.2%	0.0%	2.4%	0.0%
Royal Glamorgan	100%	1.1%	2.5%	40.0%	19.6%	6.4%	2.1%	10.4%	1.4%	16.4%	0.7%
Royal Gwent	100%	1.8%	0.6%	55.0%	24.1%	9.4%	1.8%	2.0%	1.2%	3.9%	0.4%
Swansea	100%	4.4%	0.3%	41.9%	19.0%	10.9%	2.6%	12.0%	1.0%	7.8%	0.0%
West Wales	100%	2.9%	1.4%	34.8%	24.8%	14.3%	10.0%	5.7%	0.0%	6.2%	0.0%
Withybush	100%	4.0%	3.0%	46.5%	30.3%	12.1%	0.0%	1.0%	0.0%	3.0%	0.0%
Wrexham	100%	1.9%	2.9%	49.5%	21.0%	6.7%	0.0%	10.5%	1.9%	5.7%	0.0%
TOTAL	100%	2.8%	1.7%	47.3%	21.3%	9.2%	3.5%	7.8%	0.7%	5.9%	0.2%

Figure 14b: Outcome of referral - following smear results of moderate dyskaryosis or worse

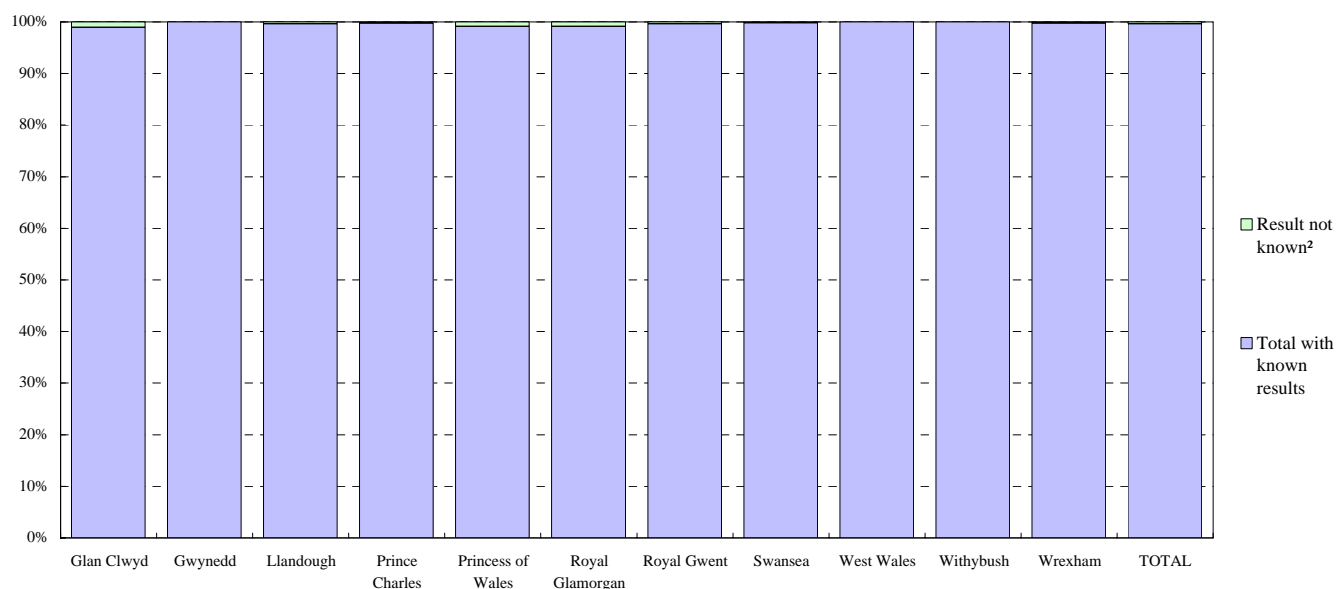


NOTES:

¹ as percentage of total results (ie 'known' and 'not known')

² Other = 'HPV only', 'No CIN/No HPV', 'Inadequate biopsy', and 'Colposcopy NAD - no biopsy taken'

Figure 14c: Results of tests on women recommended for gynaecological referral

Table 15: Positive Predictive Value (PPV)¹ for high grade³ referral smears, by laboratory

Source: KC61, part D

Laboratory	Number of x ¹	Number of y ¹	PPV ¹
Glan Clwyd	92	48	66%
Gwynedd	103	23	82%
Llandough	281	53	84%
Prince Charles	91	44	67%
Princess of Wales	66	14	83%
Royal Glamorgan	177	53	77%
Royal Gwent	399	65	86%
Swansea	252	98	72%
West Wales	134	63	68%
Withybush	83	13	86%
Wrexham	79	18	81%
TOTAL	1,757	492	78%

NOTES:

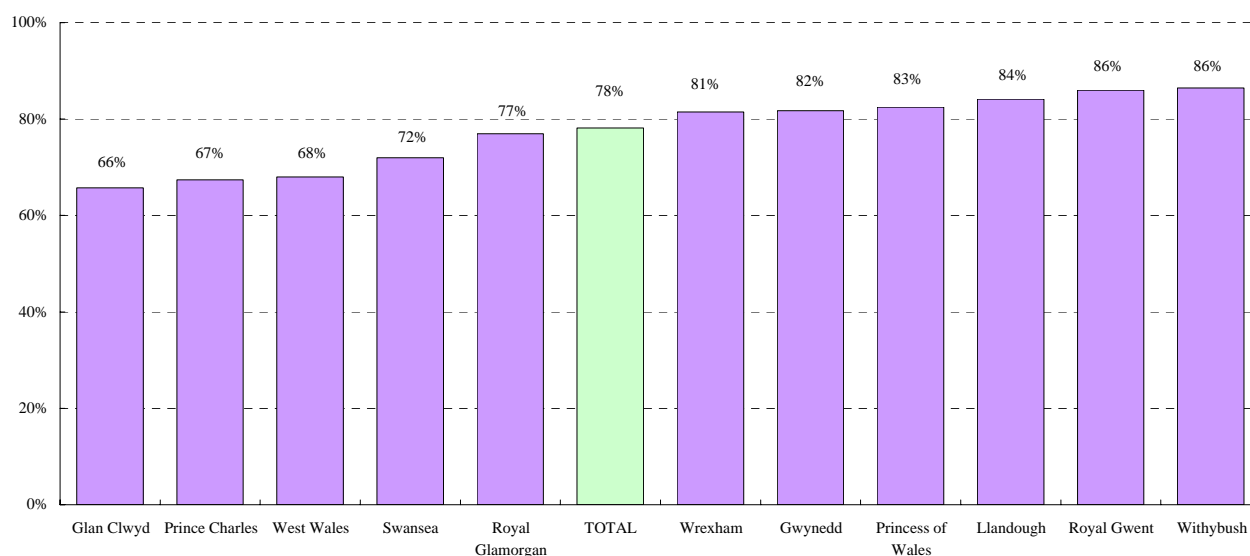
¹ PPV is calculated where the most significant result was moderate dyskaryosis or worse (grades 7/4/5/6) resulting in recommendation for gynaecological referral.

x = outcome of referral equal to 'cancer', 'adenocarcinoma in-situ', 'CIN3' or 'CIN2'.

y = outcome of referral equal to 'CIN1', 'HPV only' or 'No CIN/No HPV'.

% is calculated as Total x/(Total x + Total y) * 100

See the 'Introduction' for further information.

Figure 15: Positive Predictive Value (PPV)¹ for high grade³ referral smears, by laboratory**NOTES:**

² Reasons for 'results not known' include women whose outcomes cannot be traced, women who have declined to attend for further investigations, women whose results are not yet available or women whose biopsies have not yet been carried out (for example due to pregnancy).

³ 'High grade' includes results reported as 'moderate dyskaryosis', 'severe dyskaryosis', 'severe dyskaryosis/?invasive carcinoma', or '?glandular neoplasia'.

Table 16a: Number of new patients seen, by referral smear result and colposcopy clinic

Source: KC65

Colposcopy Clinic	Inadequate	Negative	Borderline changes	Mild dysk	Moderate dysk	Severe dysk	Severe dysk /?Invasive carcinoma	?Glandular neoplasia	No referral smear	Total
Brecon	-	1	11	24	10	6	-	-	1	53
Bronglais	16	-	25	54	27	19	-	4	16	161
Caerphilly	4	3	44	75	56	37	-	2	39	260
Cardiff and Vale	15	2	216	235	142	187	12	13	173	995
Glan Clwyd	43	-	94	98	73	54	3	4	158	527
Gwynedd	31	1	55	75	74	49	3	11	117	416
Llandrindod Wells	5	-	5	8	3	7	-	-	-	28
Neath	13	2	87	52	76	44	-	2	54	330
Nevill Hall	1	7	59	84	47	39	3	-	86	326
Prince Charles	20	26	142	172	97	71	2	1	92	623
Prince Philip	14	-	31	80	35	10	-	3	20	193
Princess of Wales	25	-	82	73	62	34	1	6	11	294
Royal Glamorgan	14	1	52	78	84	67	3	6	28	333
Royal Gwent	5	3	135	216	164	124	1	14	65	727
Singleton	29	1	176	130	131	66	8	5	116	662
West Wales	37	1	52	137	57	21	1	4	52	362
Withybush	8	1	76	83	59	25	-	-	104	356
Wrexham	38	2	161	150	71	47	5	8	136	618
WALES	318	51	1,503	1,824	1,268	907	42	83	1,268	7,264

Table 16b: Percentage of new patients seen, by referral smear result and colposcopy clinic

Colposcopy Clinic	Inadequate	Negative	Borderline changes	Mild dysk	Moderate dysk	Severe dysk	Severe dysk /?Invasive carcinoma	?Glandular neoplasia	No referral smear	Total
Brecon	-	1.9	20.8	45.3	18.9	11.3	-	-	1.9	100.0
Bronglais	9.9	-	15.5	33.5	16.8	11.8	-	2.5	9.9	100.0
Caerphilly	1.5	1.2	16.9	28.8	21.5	14.2	-	0.8	15.0	100.0
Cardiff and Vale	1.5	0.2	21.7	23.6	14.3	18.8	1.2	1.3	17.4	100.0
Glan Clwyd	8.2	-	17.8	18.6	13.9	10.2	0.6	0.8	30.0	100.0
Gwynedd	7.5	0.2	13.2	18.0	17.8	11.8	0.7	2.6	28.1	100.0
Llandrindod Wells	17.9	-	17.9	28.6	10.7	25.0	-	-	-	100.0
Neath	3.9	0.6	26.4	15.8	23.0	13.3	-	0.6	16.4	100.0
Nevill Hall	0.3	2.1	18.1	25.8	14.4	12.0	0.9	-	26.4	100.0
Prince Charles	3.2	4.2	22.8	27.6	15.6	11.4	0.3	0.2	14.8	100.0
Prince Philip	7.3	-	16.1	41.5	18.1	5.2	-	1.6	10.4	100.0
Princess of Wales	8.5	-	27.9	24.8	21.1	11.6	0.3	2.0	3.7	100.0
Royal Glamorgan	4.2	0.3	15.6	23.4	25.2	20.1	0.9	1.8	8.4	100.0
Royal Gwent	0.7	0.4	18.6	29.7	22.6	17.1	0.1	1.9	8.9	100.0
Singleton	4.4	0.2	26.6	19.6	19.8	10.0	1.2	0.8	17.5	100.0
West Wales	10.2	0.3	14.4	37.8	15.7	5.8	0.3	1.1	14.4	100.0
Withybush	2.2	0.3	21.3	23.3	16.6	7.0	-	-	29.2	100.0
Wrexham	6.1	0.3	26.1	24.3	11.5	7.6	0.8	1.3	22.0	100.0
WALES	4.4	0.7	20.7	25.1	17.5	12.5	0.6	1.1	17.5	100.0

Figure 16: Percentage of new patients seen, by referral smear result and colposcopy clinic

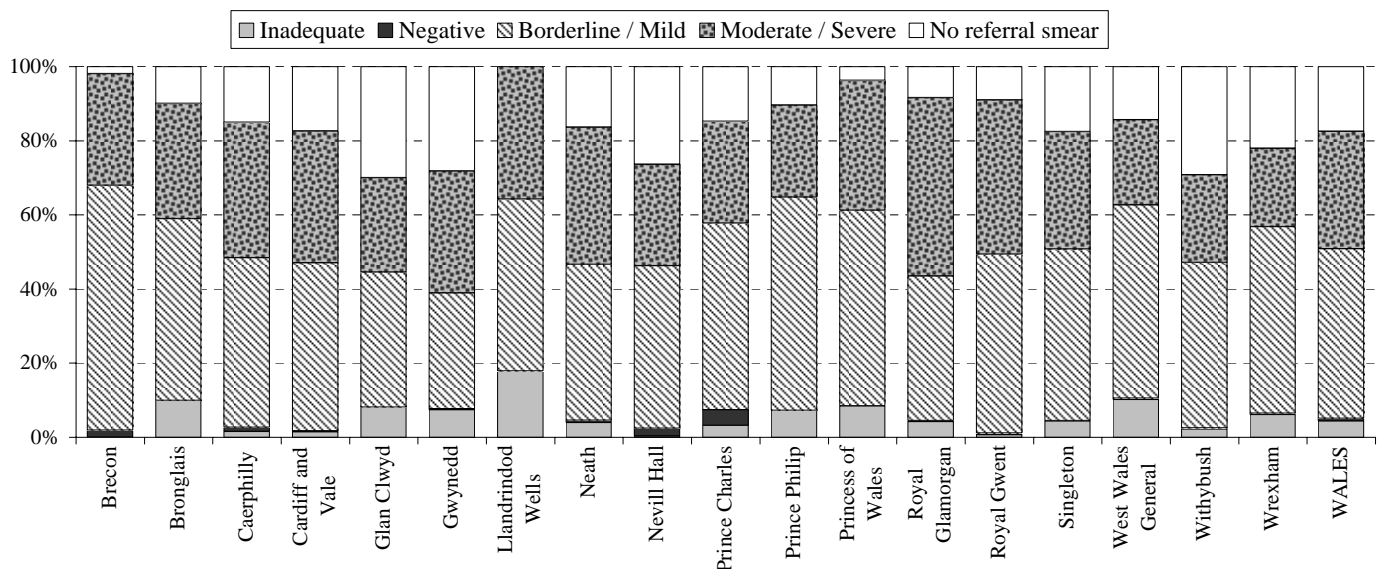


Table 17: Time from receipt of referral to first offered appointment, by colposcopy clinic (excluding patient instigated delays)

Source: KC65

Colposcopy Clinic	All smears			Moderate dyskaryosis or worse		
	< 8 weeks	> 8 weeks	Total	< 4 weeks	> 4 weeks	Total
Brecon	42	13	55	10	6	16
Bronglais	134	25	159	34	17	51
Caerphilly	214	58	272	73	28	101
Cardiff and Vale	1,048	9	1,057	368	8	376
Glan Clwyd	491	53	544	127	13	140
Gwynedd	329	105	434	87	54	141
Llandrindod Wells	31	1	32	9	2	11
Neath	291	52	343	82	45	127
Nevill Hall	243	111	354	18	82	100
Prince Charles	633	2	635	170	4	174
Prince Philip	200	12	212	49	5	54
Princess of Wales	292	10	302	88	12	100
Royal Glamorgan	343	23	366	135	38	173
Royal Gwent	407	331	738	244	61	305
Singleton	303	402	705	140	93	233
West Wales	351	26	377	79	9	88
Withybush	307	57	364	60	25	85
Wrexham	571	85	656	121	20	141
WALES	6,230	1,375	7,605	1,894	522	2,416
PERCENTAGE	81.9	18.1		78.4	21.6	

Figure 17a: Percentage of all new referrals offered an appointment within 8 weeks, by colposcopy clinic (excluding patient instigated delays)

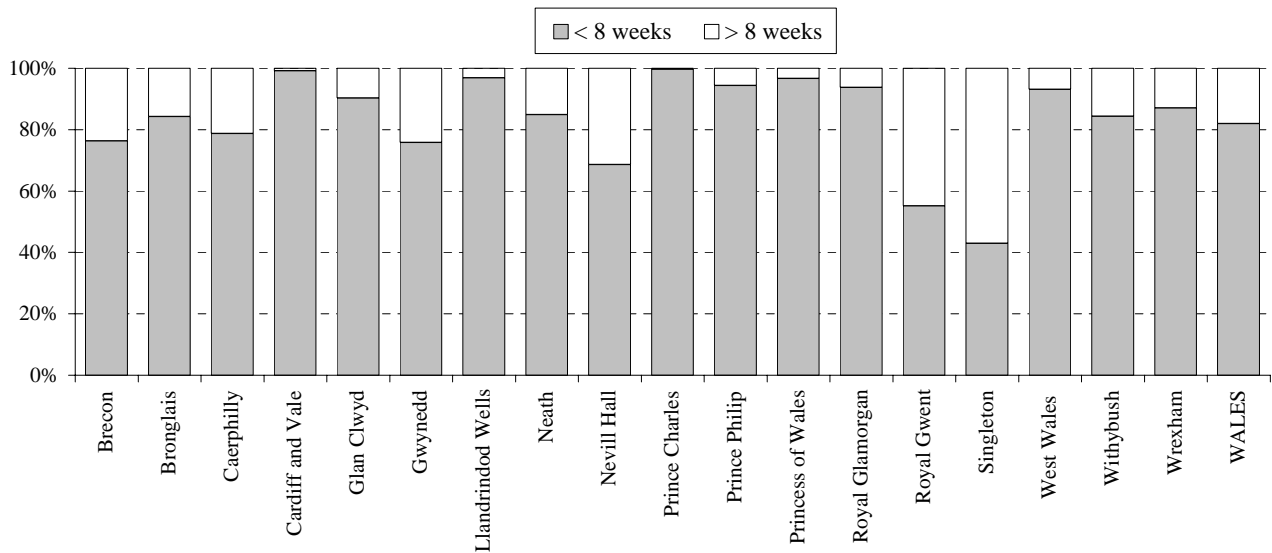


Figure 17b: Percentage of new referrals with moderate dyskaryosis or worse smears offered an appointment within 4 weeks, by colposcopy clinic (excluding patient instigated delays)

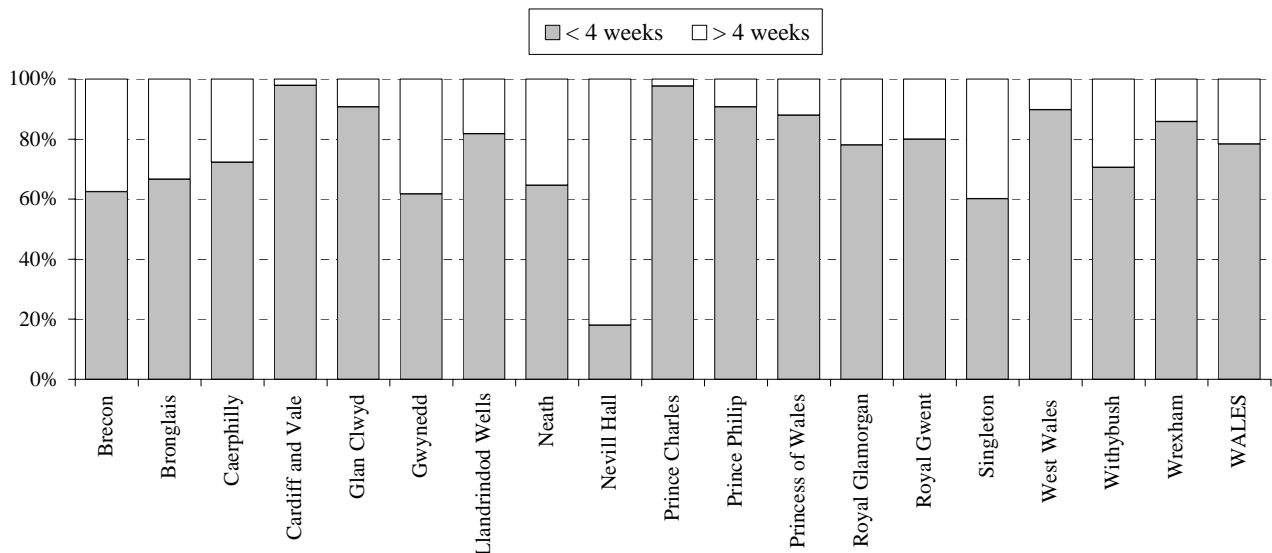


Table 18a: Total attended visits, by type of visit and colposcopy clinic

Source: KC65

Colposcopy Clinic	Colposcopic assessment	Select and treat	Planned treatment	Post treatment colp FU	Non treatment colp FU	Smear/ swab only - no colp	Consultation - no clinical activity	Not specified	Total
Brecon	75	12	14	3	3	13	-	20	140
Bronglais	128	38	23	36	75	106	8	4	418
Caerphilly	206	43	81	97	39	3	6	194	669
Cardiff and Vale	1,135	42	462	319	244	432	409	11	3,054
Glan Clwyd	388	23	191	324	287	187	16	670	2,086
Gwynedd	320	118	130	81	69	202	55	1	976
Llandrindod Wells	21	9	8	3	7	13	-	1	62
Neath	327	3	167	227	202	119	28	26	1,099
Nevill Hall	306	105	42	134	71	124	17	55	854
Prince Charles	517	64	460	440	146	198	95	35	1,955
Prince Philip	137	8	74	52	65	321	140	31	828
Princess of Wales	226	60	96	115	134	100	8	19	758
Royal Glamorgan	311	10	185	172	153	50	63	55	999
Royal Gwent	584	157	248	543	630	87	68	63	2,380
Singleton	696	40	255	226	541	75	54	5	1,892
West Wales	314	19	168	271	219	420	117	46	1,574
Withybush	368	24	74	24	15	243	20	184	952
Wrexham	638	59	118	21	48	542	38	163	1,627
WALES	6,697	834	2,796	3,088	2,948	3,235	1,142	1,583	22,323

Table 18b: Percentage of attended visits, by type of visit and colposcopy clinic

Colposcopy Clinic	Colposcopic assessment	Select and treat	Planned treatment	Post treatment colp FU	Non treatment colp FU	Smear/ swab only - no colp	Consultation - no clinical activity	Not specified	Total
Brecon	53.6	8.6	10.0	2.1	2.1	9.3	-	14.3	100.0
Bronglais	30.6	9.1	5.5	8.6	17.9	25.4	1.9	1.0	100.0
Caerphilly	30.8	6.4	12.1	14.5	5.8	0.4	0.9	29.0	100.0
Cardiff and Vale	37.2	1.4	15.1	10.4	8.0	14.1	13.4	0.4	100.0
Glan Clwyd	18.6	1.1	9.2	15.5	13.8	9.0	0.8	32.1	100.0
Gwynedd	32.8	12.1	13.3	8.3	7.1	20.7	5.6	0.1	100.0
Llandrindod Wells	33.9	14.5	12.9	4.8	11.3	21.0	-	1.6	100.0
Neath	29.8	0.3	15.2	20.7	18.4	10.8	2.5	2.4	100.0
Nevill Hall	35.8	12.3	4.9	15.7	8.3	14.5	2.0	6.4	100.0
Prince Charles	26.4	3.3	23.5	22.5	7.5	10.1	4.9	1.8	100.0
Prince Philip	16.5	1.0	8.9	6.3	7.9	38.8	16.9	3.7	100.0
Princess of Wales	29.8	7.9	12.7	15.2	17.7	13.2	1.1	2.5	100.0
Royal Glamorgan	31.1	1.0	18.5	17.2	15.3	5.0	6.3	5.5	100.0
Royal Gwent	24.5	6.6	10.4	22.8	26.5	3.7	2.9	2.6	100.0
Singleton	36.8	2.1	13.5	11.9	28.6	4.0	2.9	0.3	100.0
West Wales	19.9	1.2	10.7	17.2	13.9	26.7	7.4	2.9	100.0
Withybush	38.7	2.5	7.8	2.5	1.6	25.5	2.1	19.3	100.0
Wrexham	39.2	3.6	7.3	1.3	3.0	33.3	2.3	10.0	100.0
WALES	30.0	3.7	12.5	13.8	13.2	14.5	5.1	7.1	100.0

Figure 18: Percentage of attended visits, by type of visit and colposcopy clinic

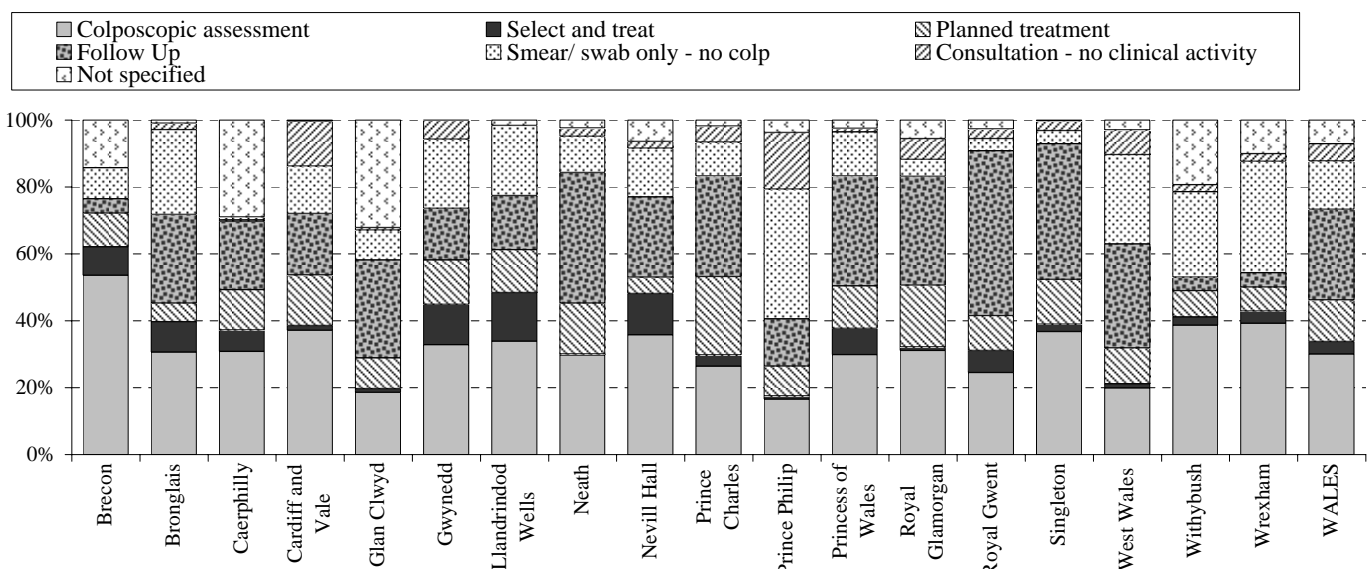


Table 19a: Number of new patients seen, by result of referral smear and most significant procedure at first visit

Source: KC65

Result of referral smear	Ablation no biopsy	Ablation & biopsy	Excision	Diagnostic biopsy	Other	No treatment	Total
Inadequate	5	-	1	104	-	208	318
Negative	5	1	1	18	2	24	51
Borderline changes	6	10	44	949	4	490	1,503
Mild dyskaryosis	5	13	78	1,251	1	476	1,824
Moderate dyskaryosis	3	6	262	802	-	195	1,268
Severe dyskaryosis	-	2	248	504	-	153	907
Severe dyskaryosis /?invasive carcinoma	-	-	10	24	-	8	42
?Glandular neoplasia	-	-	24	42	-	17	83
No referral smear	55	13	26	389	30	755	1,268
Total	79	45	694	4,083	37	2,326	7,264

Table 19b: Percentage of new patients seen, by result of referral smear and most significant procedure at first visit

Result of referral smear	Ablation no biopsy	Ablation & biopsy	Excision	Diagnostic biopsy	Other	No treatment	Total
Inadequate	1.6	-	0.3	32.7	-	65.4	100.0
Negative	9.8	-	2.0	35.3	3.9	47.1	100.0
Borderline changes	0.4	0.7	2.9	63.1	0.3	32.6	100.0
Mild dyskaryosis	0.3	0.7	4.3	68.6	0.1	26.1	100.0
Moderate dyskaryosis	0.2	0.5	20.7	63.2	-	15.4	100.0
Severe dyskaryosis	-	0.2	27.3	55.6	-	16.9	100.0
Severe dyskaryosis /?invasive carcinoma	-	-	23.8	57.1	-	19.0	100.0
?Glandular neoplasia	-	-	28.9	50.6	-	20.5	100.0
No referral smear	4.3	1.0	2.1	30.7	2.4	59.5	100.0
Total	1.1	0.6	9.6	56.2	0.5	32.0	100.0

Figure 19: Percentage of new patients seen, by result of referral smear and most significant procedure at first visit

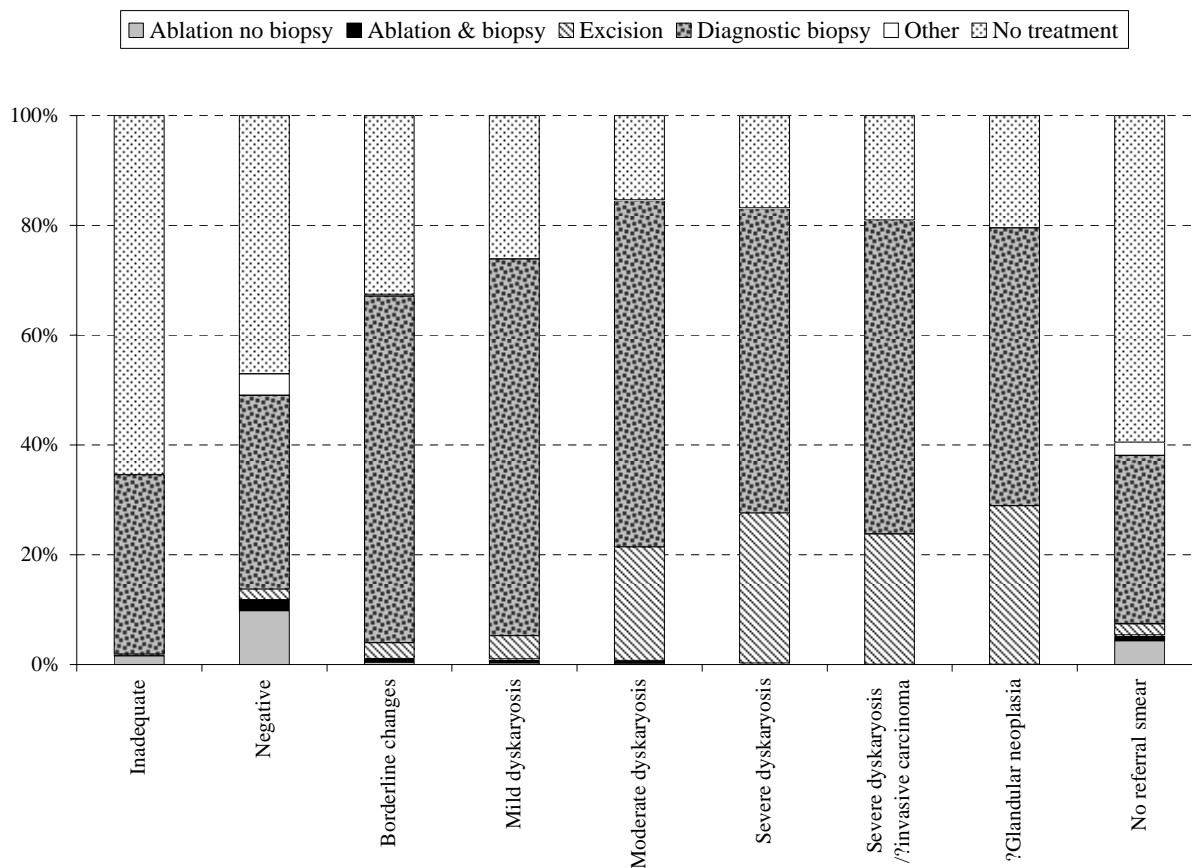


Table 20a: Number of new patients seen, by most significant procedure at first visit and colposcopy clinic

Source: KC65

Colposcopy Clinic	Ablation no biopsy	Ablation & biopsy	Excision	Diagnostic biopsy	Other	No treatment	Total
Brecon	-	-	14	16	1	22	53
Bronglais	5	-	36	74	-	46	161
Caerphilly	8	3	40	112	2	95	260
Cardiff and Vale	3	1	40	755	-	196	995
Glan Clwyd	2	-	23	271	1	230	527
Gwynedd	7	-	104	157	11	137	416
Llandrindod Wells	-	-	5	21	-	2	28
Neath	1	1	3	221	-	104	330
Nevill Hall	9	15	82	76	10	134	326
Prince Charles	11	5	48	421	2	136	623
Prince Philip	1	-	10	96	-	86	193
Princess of Wales	2	-	55	113	1	123	294
Royal Glamorgan	-	-	3	274	-	56	333
Royal Gwent	6	2	142	328	-	249	727
Singleton	6	3	25	451	5	172	662
West Wales	1	-	21	188	-	152	362
Withybush	15	8	11	230	3	89	356
Wrexham	2	7	32	279	1	297	618
WALES	79	45	694	4,083	37	2,326	7,264

Table 20b: Percentage of new patients seen, by most significant procedure at first visit and colposcopy clinic

Colposcopy Clinic	Ablation no biopsy	Ablation & biopsy	Excision	Diagnostic biopsy	Other	No treatment	Total
Brecon	-	-	26.4	30.2	1.9	41.5	100.0
Bronglais	3.1	-	22.4	46.0	-	28.6	100.0
Caerphilly	3.1	1.2	15.4	43.1	0.8	36.5	100.0
Cardiff and Vale	0.3	0.1	4.0	75.9	-	19.7	100.0
Glan Clwyd	0.4	-	4.4	51.4	0.2	43.6	100.0
Gwynedd	1.7	-	25.0	37.7	2.6	32.9	100.0
Llandrindod Wells	-	-	17.9	75.0	-	7.1	100.0
Neath	0.3	0.3	0.9	67.0	-	31.5	100.0
Nevill Hall	2.8	4.6	25.2	23.3	3.1	41.1	100.0
Prince Charles	1.8	0.8	7.7	67.6	0.3	21.8	100.0
Prince Philip	0.5	-	5.2	49.7	-	44.6	100.0
Princess of Wales	0.7	-	18.7	38.4	0.3	41.8	100.0
Royal Glamorgan	-	-	0.9	82.3	-	16.8	100.0
Royal Gwent	0.8	0.3	19.5	45.1	-	34.3	100.0
Singleton	0.9	0.5	3.8	68.1	0.8	26.0	100.0
West Wales	0.3	-	5.8	51.9	-	42.0	100.0
Withybush	4.2	2.2	3.1	64.6	0.8	25.0	100.0
Wrexham	0.3	1.1	5.2	45.1	0.2	48.1	100.0
WALES	1.1	0.6	9.6	56.2	0.5	32.0	100.0

Figure 20: Percentage of new patients seen, by most significant procedure at first visit and colposcopy clinic

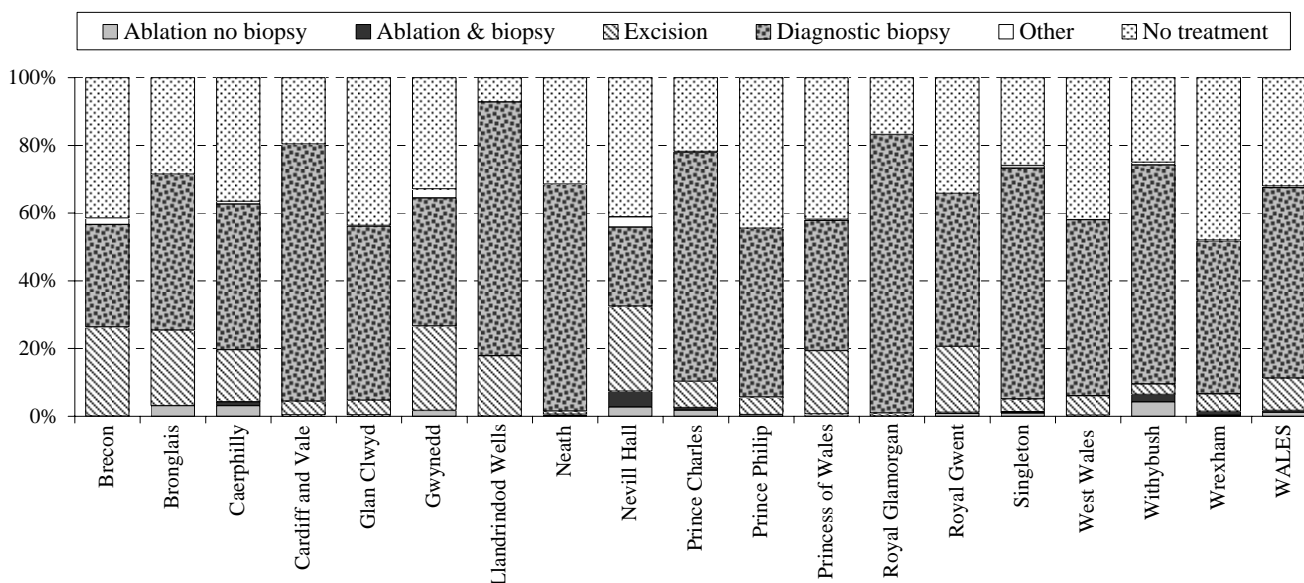


Table 21a: Number of new patients seen, by colposcopic opinion and worst outcome of histology

Source: KC65

Colposcopic Opinion	Cancer	Adeno-carcinoma in-situ	CIN 3	CIN 2	CIN 1	HPV only	No CIN/ no HPV	Inadequate biopsy	Result not known	Colposcopy NAD - no biopsy taken	Total
?Invasive	13	1	22	3	2	1	5	-	10	1	58
High grade	15	13	802	400	194	94	95	11	97	53	1,774
Low grade	5	6	223	315	592	299	362	61	204	118	2,185
Inflammatory	1	1	25	37	93	85	176	40	102	149	709
Normal	-	-	6	1	3	5	5	1	4	46	71
Other	1	4	8	4	6	5	14	-	10	8	60
Not specified	3	4	65	53	95	66	186	22	84	1,550	2,128
No assessment	1	-	13	13	5	5	15	2	6	219	279
Total	39	29	1,164	826	990	560	858	137	517	2,144	7,264

Table 21b: Percentage of new patients seen, by colposcopic opinion and worst outcome of histology

Colposcopic Opinion	Cancer	Adeno-carcinoma in-situ	CIN 3	CIN 2	CIN 1	HPV only	No CIN/ no HPV	Inadequate biopsy	Result not known	Colposcopy NAD - no biopsy taken	Total
?Invasive	22.4	1.7	37.9	5.2	3.4	1.7	8.6	-	17.2	1.7	100.0
High grade	0.8	0.7	45.2	22.5	10.9	5.3	5.4	0.6	5.5	3.0	100.0
Low grade	0.2	0.3	10.2	14.4	27.1	13.7	16.6	2.8	9.3	5.4	100.0
Inflammatory	0.1	0.1	3.5	5.2	13.1	12.0	24.8	5.6	14.4	21.0	100.0
Normal	-	-	8.5	1.4	4.2	7.0	7.0	1.4	5.6	64.8	100.0
Other	1.7	6.7	13.3	6.7	10.0	8.3	23.3	-	16.7	13.3	100.0
Not specified	0.1	0.2	3.1	2.5	4.5	3.1	8.7	1.0	3.9	72.8	100.0
No assessment	0.4	-	4.7	4.7	1.8	1.8	5.4	0.7	2.2	78.5	100.0
Total	0.5	0.4	16.0	11.4	13.6	7.7	11.8	1.9	7.1	29.5	100.0

Figure 21: Percentage of new patients seen having colposcopic assessment, by colposcopic opinion and worst outcome of histology

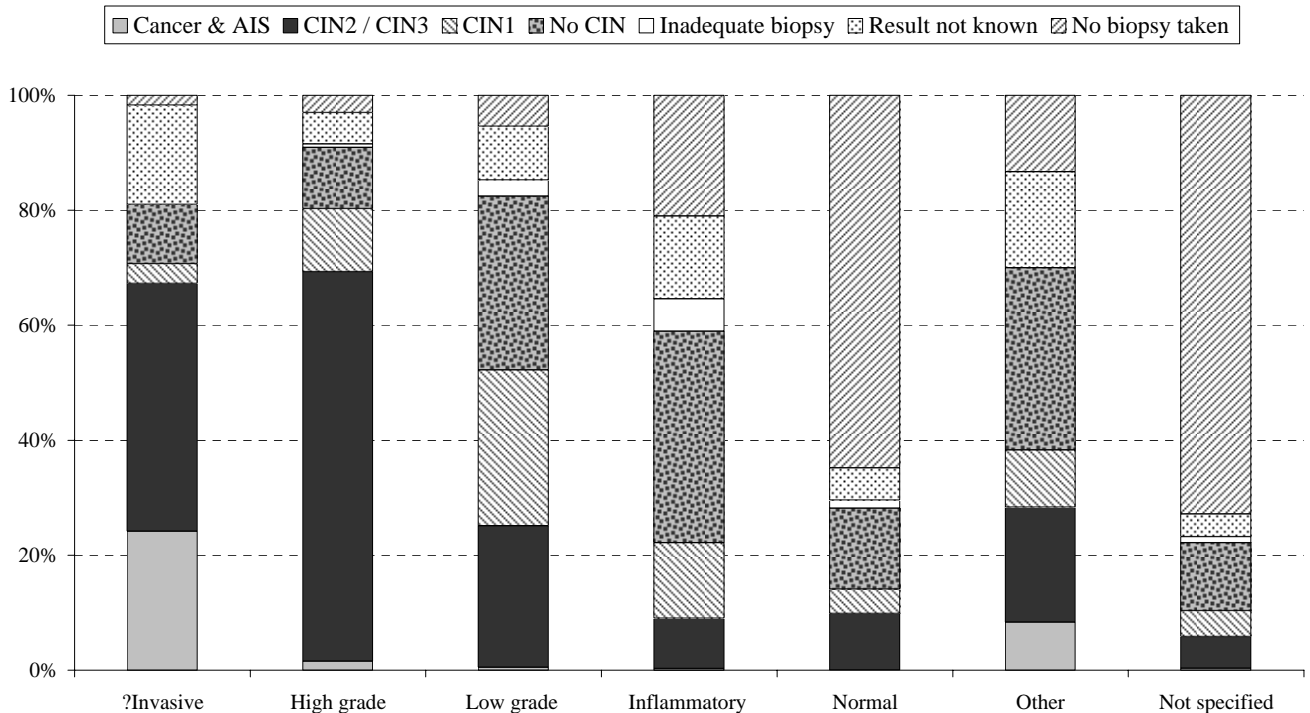


Table 22a: Number of new patients having a biopsy taken, by colposcopy clinic and worst outcome of histology

Source: KC65

Colposcopy Clinic	Cancer	Adeno-carcinoma				HPV only	No CIN/ no HPV	Inadequate biopsy	Result		No biopsy taken	Total
		in-situ	CIN 3	CIN 2	CIN 1				not known			
Brecon	-	-	9	8	12	3	1	-	5	15	53	
Bronglais	-	-	20	11	10	32	15	6	20	47	161	
Caerphilly	2	-	27	24	37	7	12	11	43	97	260	
Cardiff and Vale	4	11	238	93	91	149	98	27	116	168	995	
Glan Clwyd	3	-	67	43	50	15	118	8	19	204	527	
Gwynedd	7	3	96	60	58	5	39	6	2	140	416	
Llandrindod Wells	1	-	4	6	6	3	5	-	1	2	28	
Neath	-	-	45	38	33	22	78	1	16	97	330	
Nevill Hall	1	1	41	29	47	38	14	2	12	141	326	
Prince Charles	-	-	76	42	90	104	50	20	122	119	623	
Prince Philip	2	-	23	19	32	18	6	1	16	76	193	
Princess of Wales	7	4	61	35	23	21	18	3	10	112	294	
Royal Glamorgan	2	3	84	37	28	25	78	21	7	48	333	
Royal Gwent	1	2	160	126	121	30	27	11	42	207	727	
Singleton	4	2	83	84	70	50	163	10	27	169	662	
West Wales	1	3	42	43	89	8	36	4	-	136	362	
Withybush	-	-	26	55	109	22	10	4	31	99	356	
Wrexham	4	-	62	73	84	8	90	2	28	267	618	
WALES	39	29	1,164	826	990	560	858	137	517	2,144	7,264	

Table 22b: Percentage of new patients having a biopsy taken, by colposcopy clinic and worst outcome of histology

Colposcopy Clinic	Cancer	Adeno-carcinoma				HPV only	No CIN/ no HPV	Inadequate biopsy	Result		No biopsy taken	Total
		in-situ	CIN 3	CIN 2	CIN 1				not known			
Brecon	-	-	17.0	15.1	22.6	5.7	1.9	-	9.4	28.3	100.0	
Bronglais	-	-	12.4	6.8	6.2	19.9	9.3	3.7	12.4	29.2	100.0	
Caerphilly	0.8	-	10.4	9.2	14.2	2.7	4.6	4.2	16.5	37.3	100.0	
Cardiff and Vale	0.4	1.1	23.9	9.3	9.1	15.0	9.8	2.7	11.7	16.9	100.0	
Glan Clwyd	0.6	-	12.7	8.2	9.5	2.8	22.4	1.5	3.6	38.7	100.0	
Gwynedd	1.7	0.7	23.1	14.4	13.9	1.2	9.4	1.4	0.5	33.7	100.0	
Llandrindod Wells	3.6	-	14.3	21.4	21.4	10.7	17.9	-	3.6	7.1	100.0	
Neath	-	-	13.6	11.5	10.0	6.7	23.6	0.3	4.8	29.4	100.0	
Nevill Hall	0.3	0.3	12.6	8.9	14.4	11.7	4.3	0.6	3.7	43.3	100.0	
Prince Charles	-	-	12.2	6.7	14.4	16.7	8.0	3.2	19.6	19.1	100.0	
Prince Philip	1.0	-	11.9	9.8	16.6	9.3	3.1	0.5	8.3	39.4	100.0	
Princess of Wales	2.4	1.4	20.7	11.9	7.8	7.1	6.1	1.0	3.4	38.1	100.0	
Royal Glamorgan	0.6	0.9	25.2	11.1	8.4	7.5	23.4	6.3	2.1	14.4	100.0	
Royal Gwent	0.1	0.3	22.0	17.3	16.6	4.1	3.7	1.5	5.8	28.5	100.0	
Singleton	0.6	0.3	12.5	12.7	10.6	7.6	24.6	1.5	4.1	25.5	100.0	
West Wales	0.3	0.8	11.6	11.9	24.6	2.2	9.9	1.1	-	37.6	100.0	
Withybush	-	-	7.3	15.4	30.6	6.2	2.8	1.1	8.7	27.8	100.0	
Wrexham	0.6	-	10.0	11.8	13.6	1.3	14.6	0.3	4.5	43.2	100.0	
WALES	0.5	0.4	16.0	11.4	13.6	7.7	11.8	1.9	7.1	29.5	100.0	

Figure 22: Percentage of new patients having a biopsy taken, by colposcopy clinic and worst outcome of histology

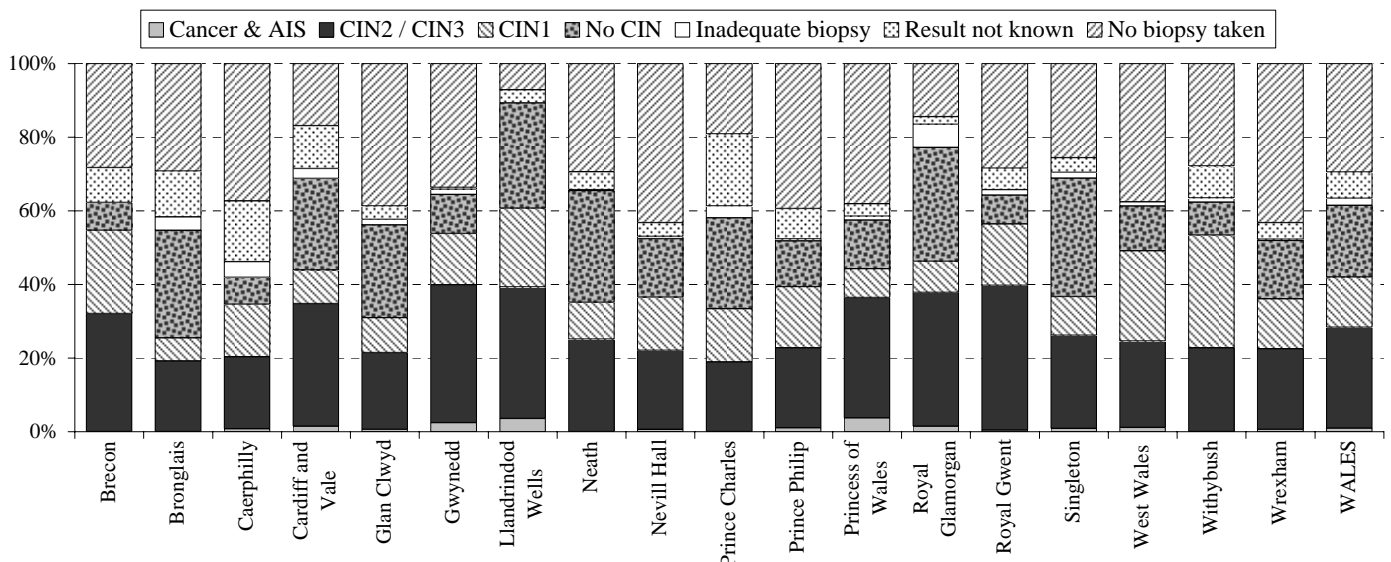


Table 23a: Number of cervical biopsies taken, by type and outcome of histology

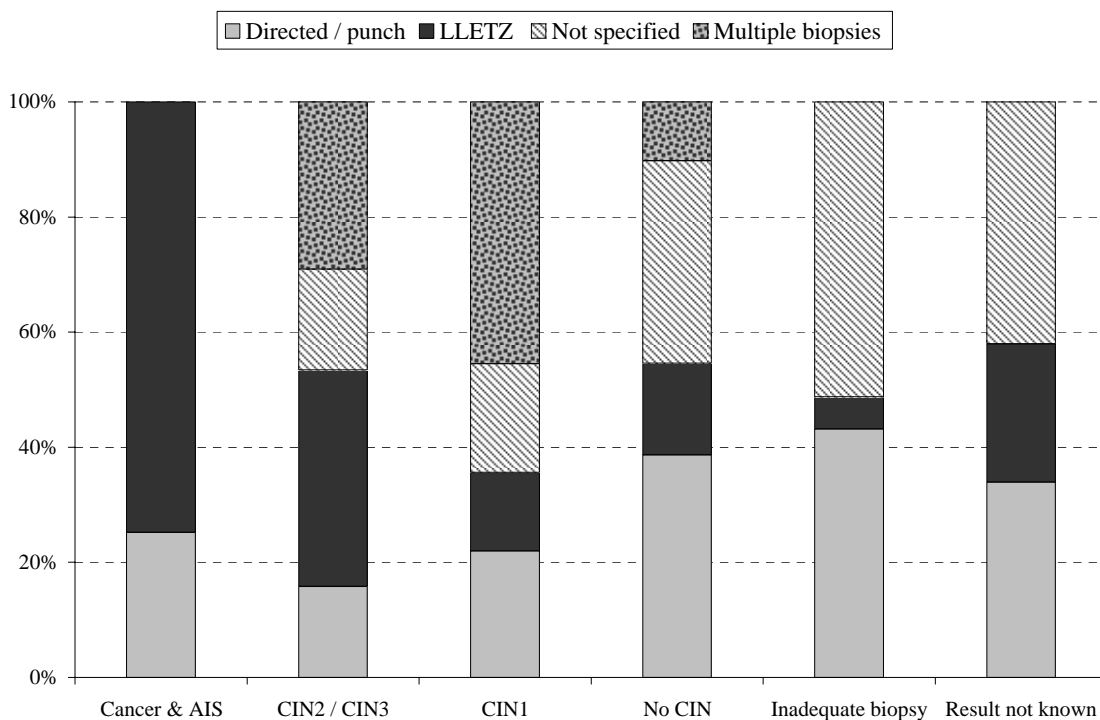
Source: KC65

Biopsy Type	Cancer	Adeno-carcinoma in-situ	CIN 3	CIN 2	CIN 1	HPV only	No CIN/ no HPV	Inadequate biopsy	Result not known	Total
Not specified	-	-	9	12	13	4	20	4	11	73
Directed / punch	16	16	692	809	1198	764	1326	267	705	5,793
LLETZ	25	19	1007	644	345	122	275	16	231	2,684
Multiple biopsies	-	-	5	5	9	1	1	-	-	21
Total	41	35	1,713	1,470	1,565	891	1,622	287	947	8,571

Table 23b: Percentage of cervical biopsies taken, by type and outcome of histology

Biopsy Type	Cancer	Adeno-carcinoma in-situ	CIN 3	CIN 2	CIN 1	HPV only	No CIN/ no HPV	Inadequate biopsy	Result not known	Total
Not specified	-	-	12.3	16.4	17.8	5.5	27.4	5.5	15.1	100.0
Directed / punch	0.3	0.3	11.9	14.0	20.7	13.2	22.9	4.6	12.2	100.0
LLETZ	0.9	0.7	37.5	24.0	12.9	4.5	10.2	0.6	8.6	100.0
Multiple biopsies	-	-	23.8	23.8	42.9	4.8	4.8	-	-	100.0
Total	0.5	0.4	20.0	17.2	18.3	10.4	18.9	3.3	11.0	100.0

Figure 23: Percentage of cervical biopsies taken, by type and outcome of histology

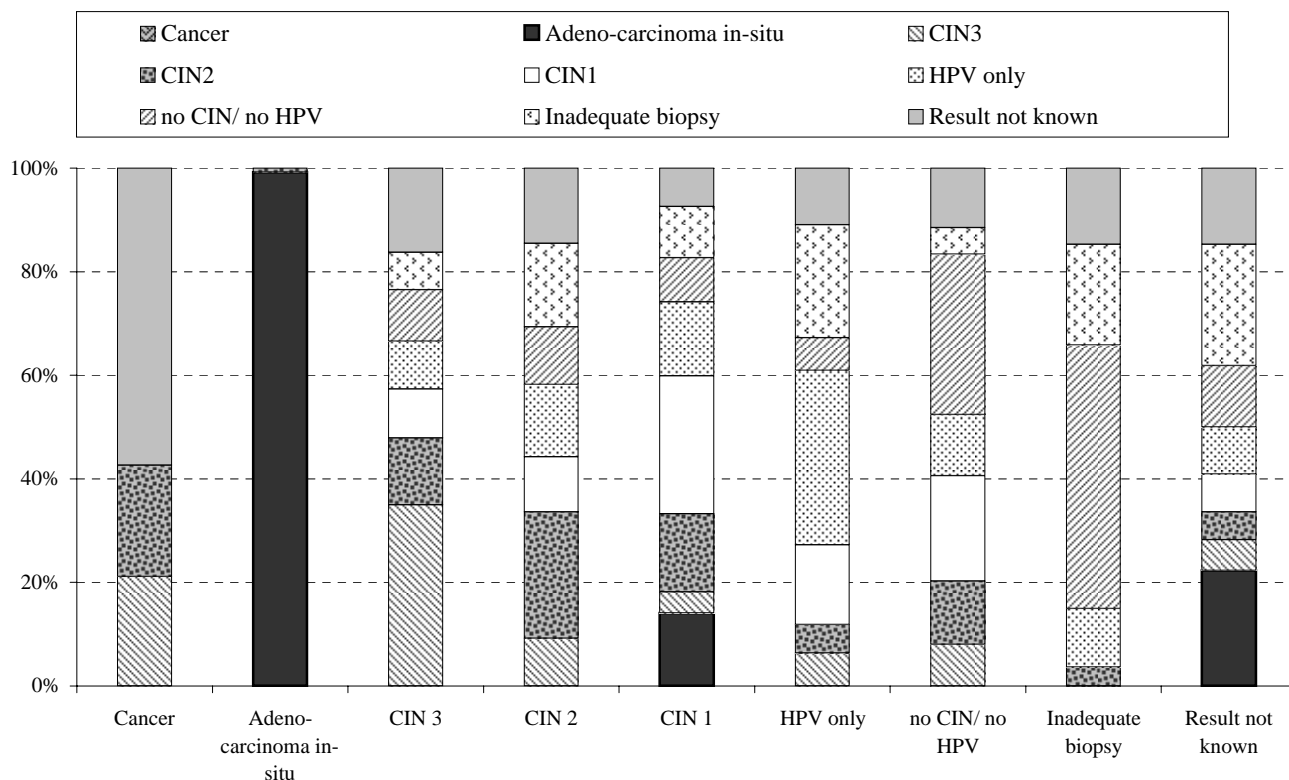


Outcome of initial punch biopsy	Cancer	Adeno-carcinoma in-situ	CIN 3	CIN 2	CIN 1	HPV only	No CIN / no HPV	Inadequate biopsy	Result not known	Total
Cancer	1	-	-	-	-	-	-	-	1	2
AIS	-	4	-	-	1	-	-	-	2	7
CIN3	3	-	263	62	18	19	34	-	33	432
CIN2	3	2	95	161	65	16	51	2	29	424
CIN1	-	-	14	14	23	9	17	-	8	85
HPV only	-	-	11	15	10	16	8	1	8	69
no CIN/no HPV	-	-	8	8	4	2	14	3	7	46
Inadequate	-	-	5	10	4	6	2	1	12	40
Unknown	1	-	15	12	4	4	6	1	10	53
Total	8	6	411	282	129	72	132	8	110	1,158

Table 24b: Correlation of outcome from an initial punch biopsy with a subsequent LLETZ (percentages)¹

Outcome of initial punch biopsy	Cancer	Adeno-carcinoma in-situ	CIN 3	CIN 2	CIN 1	HPV only	No CIN / no HPV	Inadequate biopsy	Result not known	Total
Cancer	-	-	-	-	-	-	-	-	-	0.0
AIS	-	57.1	-	-	14.3	-	-	-	28.6	100.0
CIN3	0.7	-	60.9	14.4	4.2	4.4	7.9	-	7.6	100.0
CIN2	0.7	0.5	22.4	38.0	15.3	3.8	12.0	0.5	6.8	100.0
CIN1	-	-	16.5	16.5	27.1	10.6	20.0	-	9.4	100.0
HPV only	-	-	15.9	21.7	14.5	23.2	11.6	1.4	11.6	100.0
no CIN/no HPV	-	-	17.4	17.4	8.7	4.3	30.4	6.5	15.2	100.0
Inadequate	-	-	12.5	25.0	10.0	15.0	5.0	2.5	30.0	100.0
Unknown	1.9	-	28.3	22.6	7.5	7.5	11.3	1.9	18.9	100.0
Total	0.7	0.5	35.5	24.4	11.1	6.2	11.4	0.7	9.5	100.0

Figure 24: Correlation of outcome from an initial punch biopsy with a subsequent LLETZ¹



¹ Where LLETZ biopsy is taken within three months of the initial punch biopsy being taken