

***Cervical Screening
Programme***

Wales 2003/04

CERVICAL SCREENING WALES

STATISTICAL REPORT

CERVICAL SCREENING PROGRAMME, WALES: 2003/2004

For more information about this report contact:

Helen Beer,
Information Analyst / Manager,
Screening Services,
18 Cathedral Road,
Cardiff,
CF11 9LJ

Tel: (029) 2078 7820
WHTN: 1896 7820 or 7857
Fax: (029) 2078 7900
Email: helen.beer@velindre-tr.wales.nhs.uk

November 2004

CONTENTS

Introduction and Commentary	4
KC53: Cervical Cytology	
Table 1 Test status of women and coverage, by age at test	6
Figure 1a: Screening coverage of all age groups.....	6
Figure 1b: Screening coverage of target age group (20-64 years), 1989/90 – 2003/2004	6
Table 2: Test status and coverage of target age group (20-64 years), by Local Health Board.....	7
Figure 2: Percentage of target age group screened within the last 3 and 5 years, by Local Health Board	7
Tables 3a/b: Women invited, by type of invitation and age (numbers and percentages).....	8
Figure 3a: Percentage of invitations, by type of invitation and age	9
Figure 3b: Percentage of invitations, where repeat advised in less than 3 years, by reason and age	9
Tables 4a/b: Women aged 20-64 invited in the year, by type of invitation and Local Health Board (numbers and percentages).....	10
Figure 4a: Percentage of women aged 20-64 invited in the year, by type of invitation and Local Health Board	11
Figure 4b: Percentage of invitations to women aged 20-64, where repeat advised in less than 3 years, by reason and Local Health Board.....	11
Tables 5a/b: Women tested, by type of invitation and age (numbers and percentages).....	12
Figure 5a: Percentage of women tested, by type of invitation and age.....	13
Figure 5b: Percentage of women tested, where repeat advised in less than 3 years, by reason and age	13
Table 6: Women tested, by Local Health Board	14
Figure 6: Number of women tested, all ages and target age group, by Local Health Board...	14
Tables 7a/b: Women aged 20-64 tested, by type of invitation and Local Health Board (numbers and percentages).....	15
Figure 7a: Percentage of women aged 20-64 tested, by type of invitation and Local Health Board.....	16
Figure 7b: Percentage of women aged 20-64 tested, where repeat advised in less than 3 years, by reason and Local Health Board	16
Tables 8a/b: Test results, by age (numbers and percentages).....	17
Figure 8: Low grade and high grade results as a percentage of adequate test results, by age.	17
Tables 9a/b: Test results of target age group (20-64 years), by Local Health Board (numbers and percentages).....	18
Figure 9: Low grade and high grade results of target age group (20-64 years), as a percentage of adequate test results, by Local Health Board.....	19

KC61: Pathology laboratories – Cervical cytology and biopsies

Table 10:	Number of smears examined, by pathology laboratory and source of smear	20
Figure 10a:	Percentage of inadequate smears, by laboratory	22
Figure 10b:	Percentage of high grade smears, by laboratory	22
Figure 10c:	Percentage of inadequate and high grade smears, by source of smear	22
Tables 11a/b:	Result of test, by laboratory (numbers and percentages)	23
Figure 11a:	Result of test, by laboratory	24
Figure 11b:	Low grade and high grade results as a percentage of adequate smears, by laboratory	24
Tables 12a/b:	Adequate smears examined, by result of test and age (numbers and percentages)..	25
Figure 12a:	Abnormal smears, by age and result	25
Figure 12b:	Positive results, by age and result	25
Table 13a:	Inadequate smears, by age and laboratory	26
Table 13b:	Inadequate smears as a percentage of total smears, by age and laboratory	26
Figure 13:	Inadequate smears as a percentage of total smears, by age	26
Tables 14a/b:	Outcome for women recommended for gynaecological referral following smear results: inadequate, borderline or mild dyskaryosis.....	27
Figure 14a:	Outcome of referral – following smear results of inadequate, borderline or mild dyskaryosis.....	27
Tables 14c/d:	Outcome for women recommended for gynaecological referral following smear results: moderate dyskaryosis or worse	28
Figure 14b:	Outcome of referral – following smear results of moderate dyskaryosis or worse ..	28
Figure 14c:	Results of tests on women recommended for gynaecological referral	29
Table 15:	Positive Predictive Value (PPV) for high grade referral smears, by laboratory	29
Figure 15:	Positive Predictive Value (PPV) for high grade referral smears, by laboratory	29

KC65: Colposcopy Clinics

Tables 16a/b:	New patients seen, by referral smear result and colposcopy clinic (numbers and percentages)	30
Figure 16:	Percentage of new patients seen, by referral smear result and colposcopy clinic....	30
Table 17:	Time from receipt of referral to first offered appointment, by colposcopy clinic (excluding patient instigated delays)	31
Figure 17a:	Percentage of all new referrals offered an appointment within 8 weeks, by colposcopy clinic (excluding patient instigated delays)	31
Figure 17b:	Percentage of all new referrals with moderate dyskaryosis or worse smears offered an appointment within 4 weeks, by colposcopy clinic (excluding patient instigated delays).....	31
Tables 18a/b:	Attended visits, by type of visit and colposcopy clinic (numbers and percentages)	32
Figure 18:	Percentage of attended visits, by type of visit and colposcopy clinic.....	32

Tables 19a/b: New patients seen, by result of referral smear and most significant procedure at first visit (numbers and percentages)	33
Figure 19: Percentage of new patients seen, by result of referral smear and most significant procedure at first visit	33
Tables 20a/b: New patients seen, by most significant procedure at first visit and colposcopy clinic (numbers and percentages).....	34
Figure 20: Percentage of new patients seen, by most significant procedure at first visit and colposcopy clinic.....	34
Tables 21a/b: New patients seen, by colposcopic opinion and worst outcome of histology (numbers and percentages).....	35
Figure 21: Percentage of new patients seen having colposcopic assessment, by colposcopic opinion and worst outcome of histology.....	35
Tables 22a/b: New patients having a biopsy taken, by colposcopy clinic and worst outcome of histology (numbers and percentages).....	36
Figure 22: Percentage of new patients having a biopsy taken, by colposcopy clinic and worst outcome of histology.....	36
Tables 23a/b: Cervical biopsies taken, by type and outcome of histology (numbers and percentages)	37
Figure 23: Percentage of cervical biopsies taken, by type and outcome of histology.....	37
Tables 24a/b: Correlation of outcome from an initial punch biopsy with a subsequent LLETZ (numbers and percentages).....	38
Figure 24: Correlation of outcome from an initial punch biopsy with a subsequent LLETZ ...	38

CERVICAL SCREENING PROGRAMME: WALES 2003/2004

Introduction

This report is a detailed summary of information gathered from three sources on work undertaken for Cervical Screening Wales (CSW):

1. Information from the call and recall system common to England and Wales is collected by the Cervical Screening Administration Departments, CSADs (KC53). This is the first report to show the KC53 statistics by Local Health Board area.
2. Information about cervical smears examined by the pathology laboratories (KC61) includes symptomatic smears as well as smears examined as a result of uptake of invitations for screening.
3. Information about colposcopy activity is collected from a specially commissioned computer system (ISCO-CIS) for recording clinical and administrative data within colposcopy sites in Trusts (KC65).

This report follows a series of reports produced by CSW and previously produced by the Health Statistics and Analysis Unit, part of the Welsh Assembly Government. Statistics from previous years may be found on the CSW website <http://www.screeningservices.org/csw/> and in Health Statistics Wales bulletins published by the Welsh Assembly Government.

The target for the screening programme in Wales, implemented following the establishment of CSW in April 1999, is for women to be screened at least once every three years, within a target age group of 20-64 years, commencing at their next recall date. This report includes this target age range and also the age range 25-64 years for comparison with the English bulletin on cervical cytology.

Key Facts

- At 31 March 2004, 77% of women in the target age group (20-64 years) had been screened with an adequate result at least once in the last 5 years whilst coverage exceeded 73% in all Local Health Boards.
- At 31 March 2004, coverage for 25-64 year olds was 80%.
- In 2003/2004, 207,000 women were screened (including those with inadequate results); the majority after a formal invitation from the screening programme.
- Laboratories in Wales examined around 223,000 smears in 2003/2004. (Laboratories in England examined approximately a further 15,000 on behalf of CSW).
- 8,400 new patients were seen at colposcopy clinics in Wales, 85% being directly referred by Cervical Screening Wales.

Changes in definition

Specific changes in definition are noted in the text. Prior to 1997/98, all women who were classified as "recall ceased" by the programme (for medical, age or other reasons) were excluded from the denominator used to calculate coverage. In 1998/99 there was another change of definition to exclude only those women with "recall ceased for clinical reasons" (no cervix). Since 2001/02, coverage figures include only those women who received an adequate test in the last 3 or 5 years in the numerator. Coverage figures are, therefore, not directly comparable across the years.

Coverage (Tables and Figures 1 and 2)

The reported coverage by the screening programme of women aged 20-64 was 62% in 1989/90 when population screening was introduced and has been over 80% since 1992/93. In 2003/2004 just under 77% of women aged 20-64 years had been tested with an adequate result in the last 5 years. There is relatively little variation in coverage between Local Health Boards, ranging from 73.0% in Cardiff to 80.7% in Monmouthshire. However, coverage has fallen slightly across Wales.

Invitations for screening (Tables and Figures 3 to 7)

Standard procedures for issuing first and subsequent reminders are:

- 6 month interval between first and second invitation
- 6 month interval between second invitation and the final non-responder card.

In 2003/2004 around 278,000 women aged 20-64 were invited for screening (Table 3). The invitation was a first call for screening for 16.4% of these women and a routine recall for 62.2%. For 17.1% it was the result of a repeat smear being advised, and for 4.3% a recall because the previous smear was inadequate.

In 2003/2004, about 204,000 women aged 20-64 were tested (table 5). 5.2% of these were tested in response to a first invitation and 56.7% following a routine recall. 15.9% were reported to be as a result of opportunistic screening, defined as women screened who had not been issued an invitation. From 2003/2004 there is a new category showing those women who have been tested whilst ceased from recall.

The number of opportunistic smears examined in the target age group has fallen in the last few years from just over 50,000 in 1999/2000 to just under 32,500 in 2003/2004. The number of smears taken from women aged under 20 years has fallen from 3,647 in 1999/2000 to 358 in 2003/2004, and 84.4% of these are opportunistic smears.

CSW recommends that screening is not undertaken in uninvited women under 20 years even if sexually active.

Note that the uptake of invitations cannot be accurately measured from these figures since the tests undertaken in the screening year (1st April to 31st March) do not necessarily result from an invitation issued in the same screening year.

Test Results (Tables and Figures 8 to 9)

The data for these tables and figures come from the KC53 return and differs from that shown in Tables 10 to 13 and associated figures, which come from the KC61 return. The former table relates to women and the latter to smears.

Note that these test results relate to the most **severe** result during the year from 1997/98 onwards and not to the most **recent** result as those prior to 1997.

From 2003/2004 data, the tables and graphs show borderline, mild dyskaryosis and high grade test results.

This report summarises the results of all screening tests sent to laboratories including the conventional Pap smears and liquid based cytology (LBC). Caution should therefore be taken when interpreting results from different laboratories and when comparing all Wales figures with previous years. A full report of the LBC pilot has been issued separately.

Smears Examined (Tables and Figures 10 to 13)

Nearly 223,000 smears were examined in laboratories in Wales in 2003/2004. Three English laboratories at Chester, Shrewsbury and Hereford examine smears for Welsh residents and some of this workload is shown accounting for the additional 4,500 smears in the total.

For tests taken on Welsh residents, 5.9% were reported as inadequate with wide variation between laboratories.

Most smears are taken in general practice (83.4%). The percentages of high grade smears (moderate dyskaryosis or worse) are generally higher from GUM clinics and NHS hospitals than from GPs and NHS community clinics. From 2003/2004, Table 10 and Figure 10 show the proportion of high grade results reported by source of smear. Previous reports showed positive results (severe dyskaryosis or worse).

In 2003/2004, of the 190,500 women of all ages who had an adequate smear taken in GP or NHS community clinics, 92.3% were negative, 4.0% showed borderline changes, 2.4% mild dyskaryosis, 0.7% moderate dyskaryosis and 0.6% were "positive" showing severe dyskaryosis or worse.

Tables 13a/b and Figure 13 show the distribution of inadequate smears by age. The highest proportion of smears which are inadequate are for women in their 20s and 30s.

Correlation with Histology (Tables and Figures 14 & 15)

The revision of the KC61 return in 1998 in England and Wales included a new table looking at women recommended for gynaecological referral during a 3 month period of the year. From 2002/2003, the results are shown

for referrals during the previous **twelve months**. Table 14a shows referrals following smears classed as inadequate, borderline or mild dyskaryosis. Table 14c shows referrals following smears classed as moderate dyskaryosis or worse.

From these data the Positive Predictive Value (PPV) has been calculated (method shown in notes to Table 15). The PPV is used to correlate high grade cytology with histology and records the proportion of cases in which a biopsy following a smear reported as moderate dyskaryosis or worse yields a histological diagnosis of CIN2 or worse.

Referrals to Colposcopy (Tables and Figures 16 to 24)

This is the third all Wales statistical report to be published for colposcopy services. On 1st April 2001, CSW began collecting standard information on a dedicated computer system (ISCO-CIS) from colposcopy clinics throughout Wales. These statistics have been derived directly from this system. Further training and data validation procedures continue to be undertaken to improve the robustness of these summary statistics.

There were 8,400 new patients seen at colposcopy clinics during 2003/2004 (Table 16). Of these, 85% were directly referred because of the smear result and 15% were referred for clinical reasons. Over 31% of all referrals were for a smear result of moderate dyskaryosis or worse.

Table 17 and Figure 17 show the time taken from the receipt of referral to the first appointment offered by the colposcopy clinic, excluding patient instigated delays. 67% of referrals with a moderate dyskaryosis or worse smear were offered an appointment within four weeks (90% target). Nearly 70% of all referrals were offered an appointment within eight weeks (90% target).

Table 18 and Figure 18 show activity at all attended visits in 2003/2004. There were 25,000 recorded visits. There is a wide range in the practice of "select and treat" (0% to 19.5% of visits) and 12% of all visits are for a smear only.

Tables and Figures 19 and 20 show procedures undertaken for new referrals. 31% of referrals do not receive invasive surgical intervention and 56% of referrals receive a diagnostic biopsy only. Diagnostic and treatment patterns show variations between clinics with the most diagnostic biopsies taken in Cardiff and Vale and most excisions performed at Nevill Hall clinic.

The correlation between the colposcopic opinion and the worst histology result recorded is shown in Table 21 and Figure 21. 62.4% of histology results reported as CIN2 or worse were correctly identified on assessment. 75.9% of lesions thought by the colposcopist to be high grade or worse were found to be CIN2 or worse on histology (known results).

Table 23 and Figure 23 show the number of biopsies taken and the results. The correlation Table 24 shows that of CIN3 found in LLETZ biopsies (not select and treat), 17% had an initial punch biopsy within three months reported as CIN1 or less.

Table 1 : Test status of women and coverage, by age at test

Source: KC53 Part A

WALES	Number of women					Percentage tested within the			
	resident at 31 March	with recall ceased for			with no cytology record	tested within the		tested within the	
		clinical reasons	age reasons	other reasons		last 3 years	last 5 years	last 3 years ^{1,2}	last 5 years ^{1,2}
All ages	1,542,847	114,658	62,890	145,656	404,842	544,413	654,078	38.1%	45.8%
Ages 20-64	887,420	78,493	7,822	5,775	1,188	528,491	620,881	65.3%	76.8%
Ages 25-64	789,183	78,475	7,822	5,758	462	482,217	568,509	67.9%	80.0%
Under 20	358,801	-	-	-	346,374	690	753	0.2%	0.2%
20-24	98,237	18	-	17	726	46,274	52,372	47.1%	53.3%
25-29	84,585	60	-	63	220	51,766	62,966	61.2%	74.5%
30-34	101,265	607	-	164	97	66,847	81,096	66.4%	80.6%
35-39	111,622	2,415	-	235	40	75,283	89,879	68.9%	82.3%
40-44	109,035	6,040	-	342	30	72,185	85,192	70.1%	82.7%
45-49	97,740	10,772	-	490	22	61,069	71,246	70.2%	81.9%
50-54	97,838	16,812	-	588	23	57,031	65,814	70.4%	81.2%
55-59	103,660	22,341	-	884	15	56,132	64,142	69.0%	78.9%
60-64	83,438	19,428	7,822	2,992	15	41,904	48,174	65.5%	75.3%
65-69	74,575	15,762	24,185	26,965	323	13,833	28,192	23.5%	47.9%
70-74	67,232	11,617	18,925	35,155	904	1,056	3,200	1.9%	5.8%
75+	154,819	8,786	11,958	77,761	56,053	343	1,052	0.2%	0.7%

Figure 1a: Screening coverage of all age groups^{1,2}

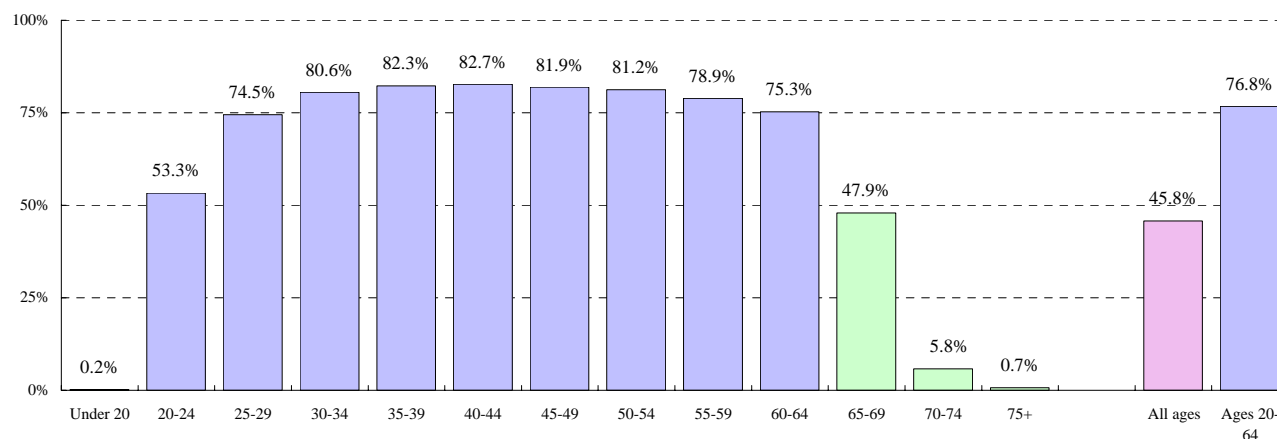
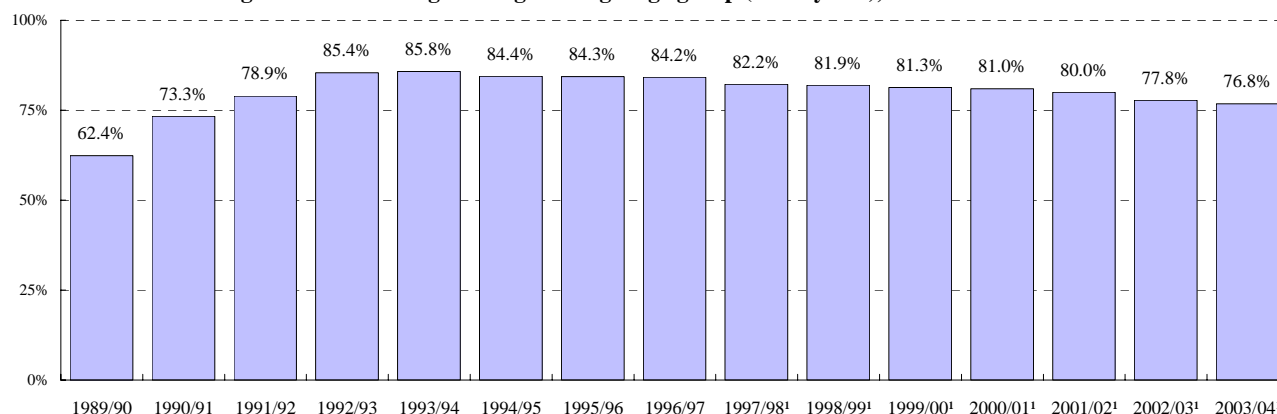


Figure 1b : Screening coverage of target age group (20-64 years), 1989/90 - 2003/04^{1,2}



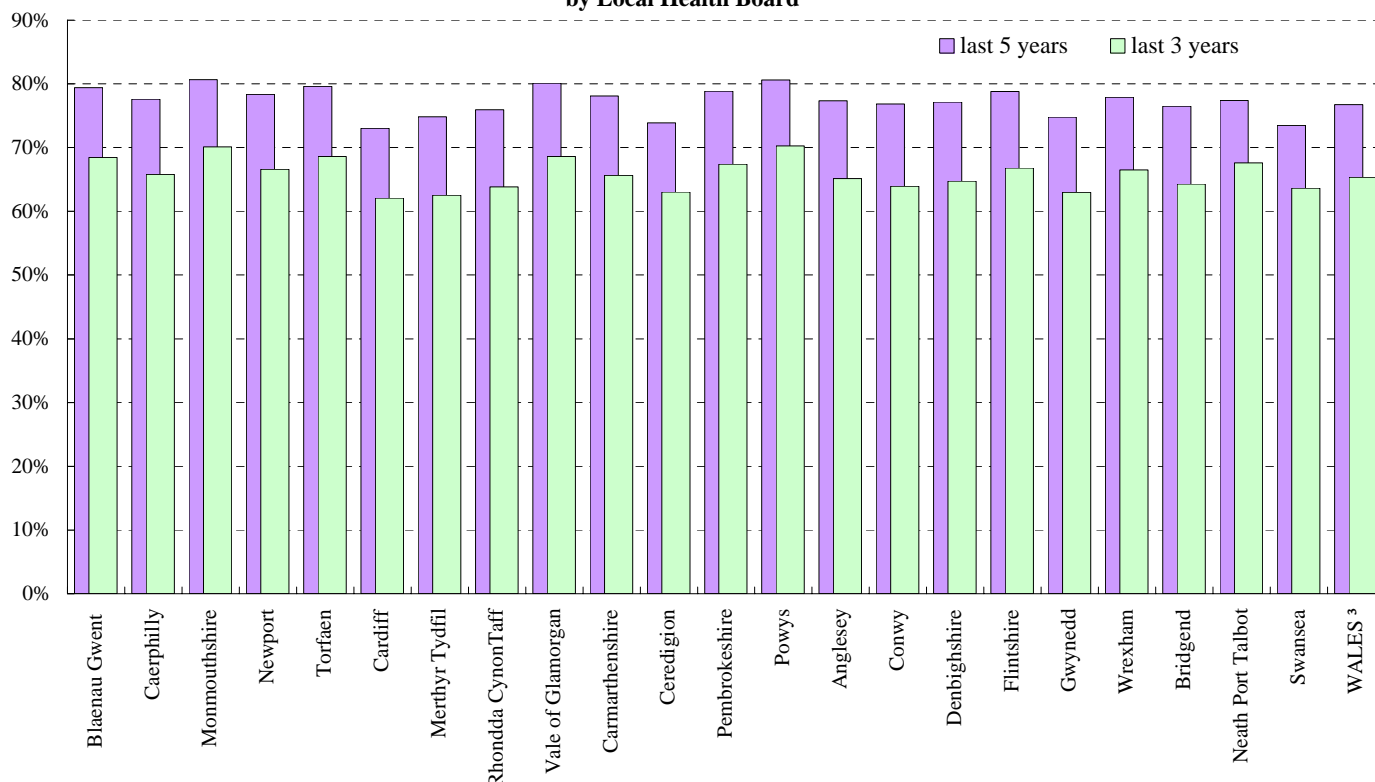
NOTES:

¹ Until 1996/97 the denominator used in calculating the percentage was the resident population less those women with recall ceased. In 1997/98 recall ceased was split into 'age', 'clinical' and 'other' reasons. Those with with recall ceased for reasons other than age were excluded from the denominator. This was revised again in 1998/99 to exclude only those women with 'recall ceased for clinical reasons' (ie no cervix). The figure for 1997/98 has been revised to the same basis. This may, however, differ from earlier figures produced. In 2001/02, this was revised again to count only adequate tests taken in the previous three and five years.

² Percentage of women tested in the last 3 years (3.5 years in 1993/94) or 5 years (5.5 years in 1993/94).

Local Health Board	Number of women						Percentage tested within the		
	resident at 31 March	with recall ceased for			with no cytology record	tested within the		last 3 years ^{1,2}	last 5 years ^{1,2}
		clinical reasons	age reasons	other reasons		last 3 years	last 5 years		
Blaenau Gwent	21,348	2,365	228	52	16	12,997	15,075	68.5%	79.4%
Caerphilly	52,704	4,476	460	125	45	31,719	37,418	65.8%	77.6%
Monmouthshire	24,500	2,481	280	55	19	15,437	17,762	70.1%	80.7%
Newport	40,310	3,402	397	95	66	24,588	28,920	66.6%	78.4%
Torfaen	26,774	2,503	288	61	31	16,648	19,326	68.6%	79.6%
Cardiff	102,381	6,308	634	720	198	59,635	70,153	62.1%	73.0%
Merthyr Tydfil	16,322	1,312	116	134	16	9,385	11,234	62.5%	74.8%
Rhondda CynonTaff	70,041	5,889	587	541	69	40,935	48,725	63.8%	76.0%
Vale of Glamorgan	34,887	2,852	315	249	39	21,974	25,670	68.6%	80.1%
Carmarthenshire	46,746	5,495	449	243	44	27,070	32,209	65.6%	78.1%
Ceredigion	26,774	2,706	258	149	28	15,173	17,783	63.0%	73.9%
Pembrokeshire	32,414	3,353	392	212	35	19,587	22,921	67.4%	78.9%
Powys	35,272	3,594	433	179	42	22,254	25,529	70.3%	80.6%
Anglesey	18,486	1,716	202	104	11	10,927	12,974	65.2%	77.4%
Conwy	31,370	3,035	338	243	22	18,116	21,774	63.9%	76.8%
Denbighshire	28,069	2,819	250	213	34	16,347	19,476	64.7%	77.1%
Flintshire	44,616	3,987	392	300	40	27,130	32,011	66.8%	78.8%
Gwynedd	35,504	2,723	355	240	33	20,639	24,510	63.0%	74.8%
Wrexham	39,313	3,508	307	226	41	23,813	27,896	66.5%	77.9%
Bridgend	42,882	3,719	343	468	67	25,172	29,954	64.3%	76.5%
Neath Port Talbot	39,112	3,966	277	376	91	23,752	27,198	67.6%	77.4%
Swansea	70,541	5,758	470	734	170	41,239	47,598	63.7%	73.5%
WALES³	887,420	78,493	7,822	5,775	1,188	528,491	620,881	65.3%	76.8%

Figure 2: Percentage of target age group (20-64 years) screened within the last 3 and 5 years, by Local Health Board^{1,2}



NOTES:

¹ Until 1996/97 the denominator used in calculating the percentage was the resident population less those women with recall ceased. In 1997/98 recall ceased was split into 'age', 'clinical' and 'other' reasons. Those with with recall ceased for reasons other than age were excluded from the denominator. This was revised again in 1998/99 to exclude only those women with 'recall ceased for clinical reasons' (ie no cervix). The figure for 1997/98 has been revised to the same basis. This may, however, differ from earlier figures produced. In 2001/02, this was revised again to count only adequate tests taken in the previous three and five years.

² Percentage of women tested in the last 3 years (3.5 years in 1993/94) or 5 years (5.5 years in 1993/94).

³ A small proportion of women could not be allocated to a Local Health Board, but are shown in the total for Wales.

Table 3a: Number of women invited in the year, by type of invitation and age at test

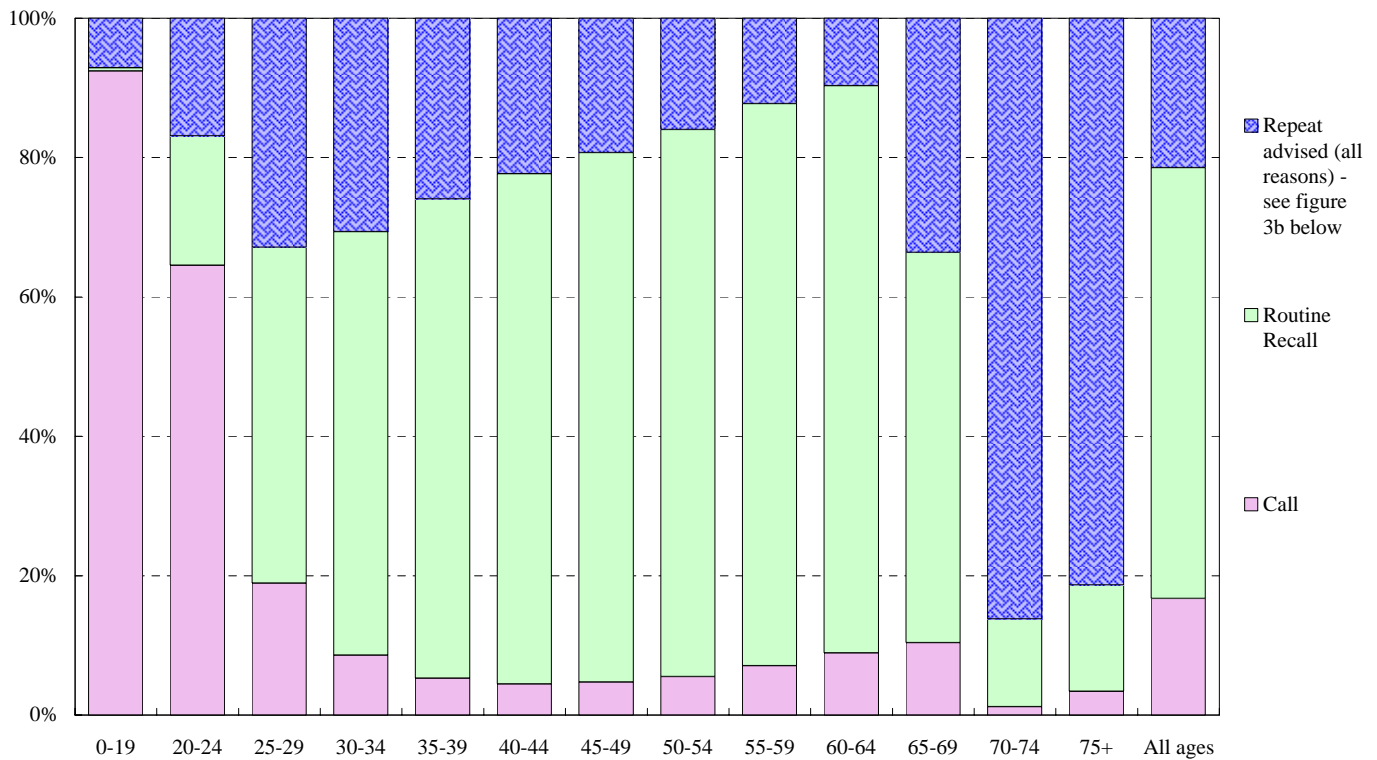
Source: KC53, part B

WALES	Total	Call	Routine recall	Repeat advised for reasons of		
				Surveillance	Abnormality	Inadequate smear
All ages	281,904	47,198	174,193	38,499	9,853	12,161
Ages 20-64	277,643	45,428	172,816	37,844	9,686	11,869
Ages 25-64	236,008	18,548	165,107	34,535	7,485	10,333
Under 20	1,641	1,517	7	28	57	32
20-24	41,635	26,880	7,709	3,309	2,201	1,536
25-29	30,220	5,715	14,572	6,470	1,714	1,749
30-34	34,556	2,961	21,012	7,232	1,416	1,935
35-39	36,600	1,931	25,170	6,482	1,243	1,774
40-44	33,784	1,504	24,736	4,944	1,062	1,538
45-49	28,109	1,329	21,363	3,502	823	1,092
50-54	26,234	1,450	20,587	2,706	610	881
55-59	26,183	1,848	21,128	2,044	390	773
60-64	20,322	1,810	16,539	1,155	227	591
65-69	2,394	249	1,340	504	70	231
70-74	167	2	21	96	24	24
75+	59	2	9	27	16	5

Table 3b: Percentage of women invited in the year, by type of invitation and age at test

WALES	Total	Call	Routine recall	Repeat advised for reasons of		
				Surveillance	Abnormality	Inadequate smear
All ages	100%	16.7%	61.8%	13.7%	3.5%	4.3%
Ages 20-64	100%	16.4%	62.2%	13.6%	3.5%	4.3%
Ages 25-64	100%	7.9%	70.0%	14.6%	3.2%	4.4%
Under 20	100%	92.4%	0.4%	1.7%	3.5%	2.0%
20-24	100%	64.6%	18.5%	7.9%	5.3%	3.7%
25-29	100%	18.9%	48.2%	21.4%	5.7%	5.8%
30-34	100%	8.6%	60.8%	20.9%	4.1%	5.6%
35-39	100%	5.3%	68.8%	17.7%	3.4%	4.8%
40-44	100%	4.5%	73.2%	14.6%	3.1%	4.6%
45-49	100%	4.7%	76.0%	12.5%	2.9%	3.9%
50-54	100%	5.5%	78.5%	10.3%	2.3%	3.4%
55-59	100%	7.1%	80.7%	7.8%	1.5%	3.0%
60-64	100%	8.9%	81.4%	5.7%	1.1%	2.9%
65-69	100%	10.4%	56.0%	21.1%	2.9%	9.6%
70-74	100%	1.2%	12.6%	57.5%	14.4%	14.4%
75+	100%	3.4%	15.3%	45.8%	27.1%	8.5%

Figure 3a: Percentage of invitations, by type of invitation and age



The total number of invitations (all ages) where the type of invitation was "repeat advised within 3 years" is just over 60,500 (or 21.5% of all invitations). The chart below (Figure 3b) shows the different reasons for the early recall.

Figure 3b: Percentage of invitations, where repeat advised in less than 3 years, by reason and age

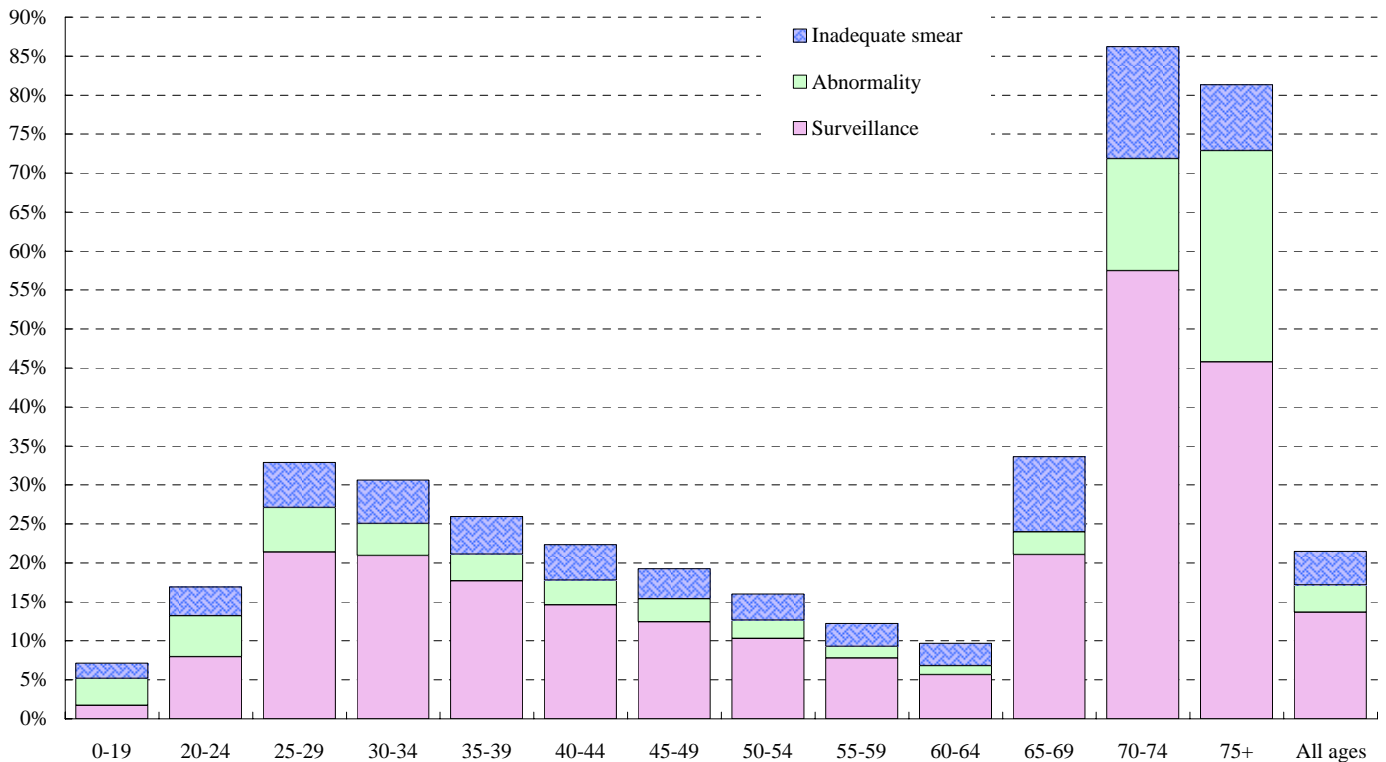


Table 4a: Number of women aged 20-64 invited in the year, by type of invitation and Local Health Board (LHB) *Source: KC53, part B*

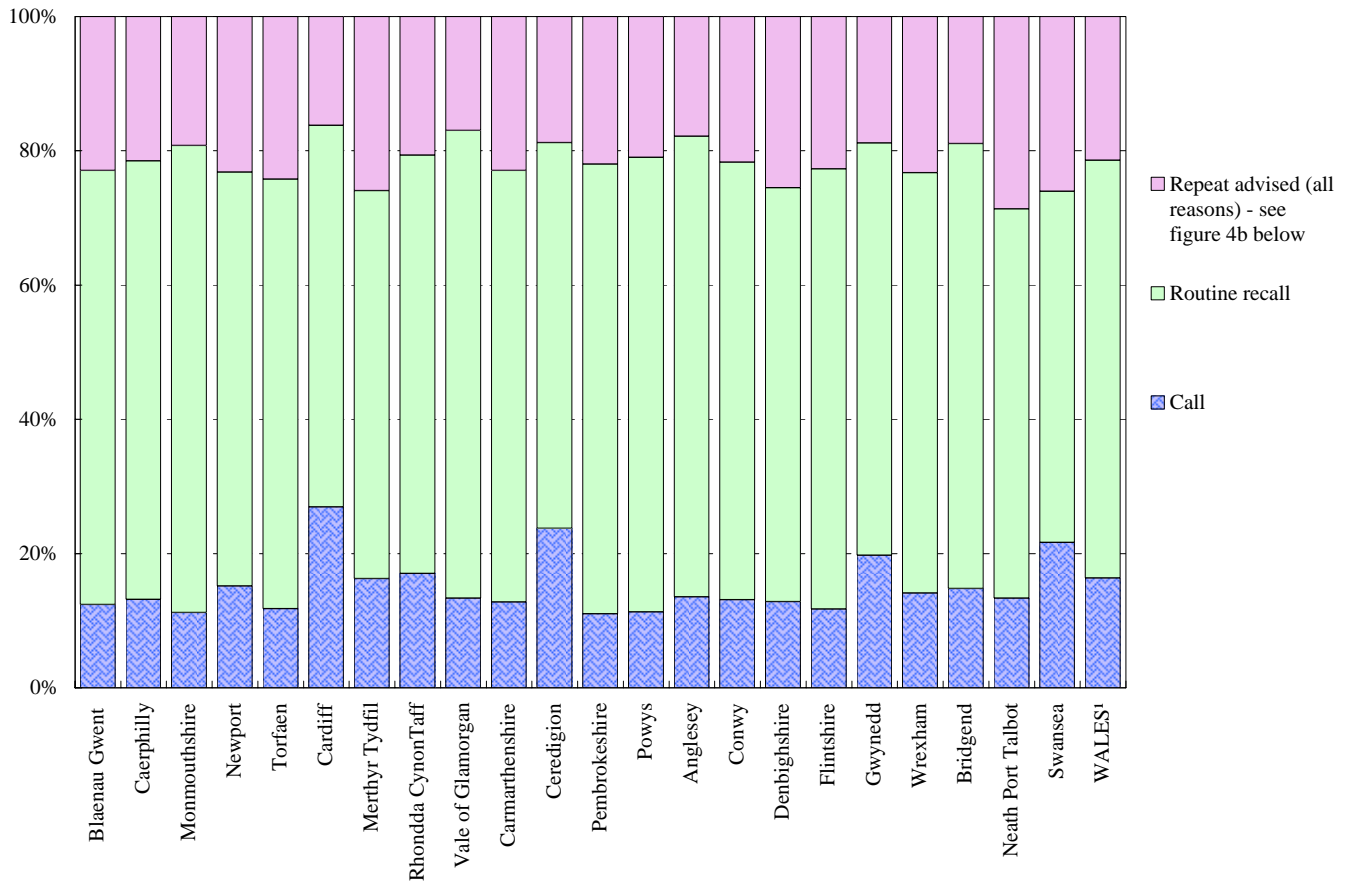
Local Health Board	Total	Call	Routine recall	Repeat advised for reasons of		
				Surveillance	Abnormality	Inadequate smear
Blaenau Gwent	6,448	798	4,172	1,142	204	132
Caerphilly	16,422	2,161	10,733	2,633	443	452
Monmouthshire	7,672	861	5,337	1,142	212	120
Newport	13,188	2,000	8,129	2,233	468	358
Torfaen	8,315	980	5,321	1,551	255	208
Cardiff	33,899	9,132	19,268	3,331	1,198	970
Merthyr Tydfil	5,773	940	3,335	880	274	344
Rhondda CynonTaff	22,781	3,878	14,200	2,938	666	1,099
Vale of Glamorgan	10,818	1,447	7,533	1,282	366	190
Carmarthenshire	14,813	1,891	9,522	2,044	723	633
Ceredigion	9,027	2,142	5,187	945	350	403
Pembrokeshire	9,841	1,083	6,594	1,377	413	374
Powys	10,655	1,206	7,211	1,342	337	559
Anglesey	5,669	768	3,889	683	108	221
Conwy	10,159	1,334	6,623	1,374	310	518
Denbighshire	8,982	1,154	5,538	1,334	359	597
Flintshire	14,029	1,647	9,196	1,876	464	846
Gwynedd	11,485	2,269	7,051	1,350	245	570
Wrexham	11,901	1,679	7,453	1,714	518	537
Bridgend	12,879	1,906	8,533	1,357	373	710
Neath Port Talbot	10,503	1,404	6,088	1,916	456	639
Swansea	20,195	4,377	10,556	3,135	869	1,258
WALES¹	277,643	45,428	172,816	37,844	9,686	11,869

Table 4b: Percentage of women aged 20-64 invited in the year, by type of invitation and Local Health Board (LHB)

Local Health Board	Total	Call	Routine recall	Repeat advised for reasons of		
				Surveillance	Abnormality	Inadequate smear
Blaenau Gwent	100%	12.4%	64.7%	17.7%	3.2%	2.0%
Caerphilly	100%	13.2%	65.4%	16.0%	2.7%	2.8%
Monmouthshire	100%	11.2%	69.6%	14.9%	2.8%	1.6%
Newport	100%	15.2%	61.6%	16.9%	3.5%	2.7%
Torfaen	100%	11.8%	64.0%	18.7%	3.1%	2.5%
Cardiff	100%	26.9%	56.8%	9.8%	3.5%	2.9%
Merthyr Tydfil	100%	16.3%	57.8%	15.2%	4.7%	6.0%
Rhondda CynonTaff	100%	17.0%	62.3%	12.9%	2.9%	4.8%
Vale of Glamorgan	100%	13.4%	69.6%	11.9%	3.4%	1.8%
Carmarthenshire	100%	12.8%	64.3%	13.8%	4.9%	4.3%
Ceredigion	100%	23.7%	57.5%	10.5%	3.9%	4.5%
Pembrokeshire	100%	11.0%	67.0%	14.0%	4.2%	3.8%
Powys	100%	11.3%	67.7%	12.6%	3.2%	5.2%
Anglesey	100%	13.5%	68.6%	12.0%	1.9%	3.9%
Conwy	100%	13.1%	65.2%	13.5%	3.1%	5.1%
Denbighshire	100%	12.8%	61.7%	14.9%	4.0%	6.6%
Flintshire	100%	11.7%	65.5%	13.4%	3.3%	6.0%
Gwynedd	100%	19.8%	61.4%	11.8%	2.1%	5.0%
Wrexham	100%	14.1%	62.6%	14.4%	4.4%	4.5%
Bridgend	100%	14.8%	66.3%	10.5%	2.9%	5.5%
Neath Port Talbot	100%	13.4%	58.0%	18.2%	4.3%	6.1%
Swansea	100%	21.7%	52.3%	15.5%	4.3%	6.2%
WALES¹	100%	16.4%	62.2%	13.6%	3.5%	4.3%

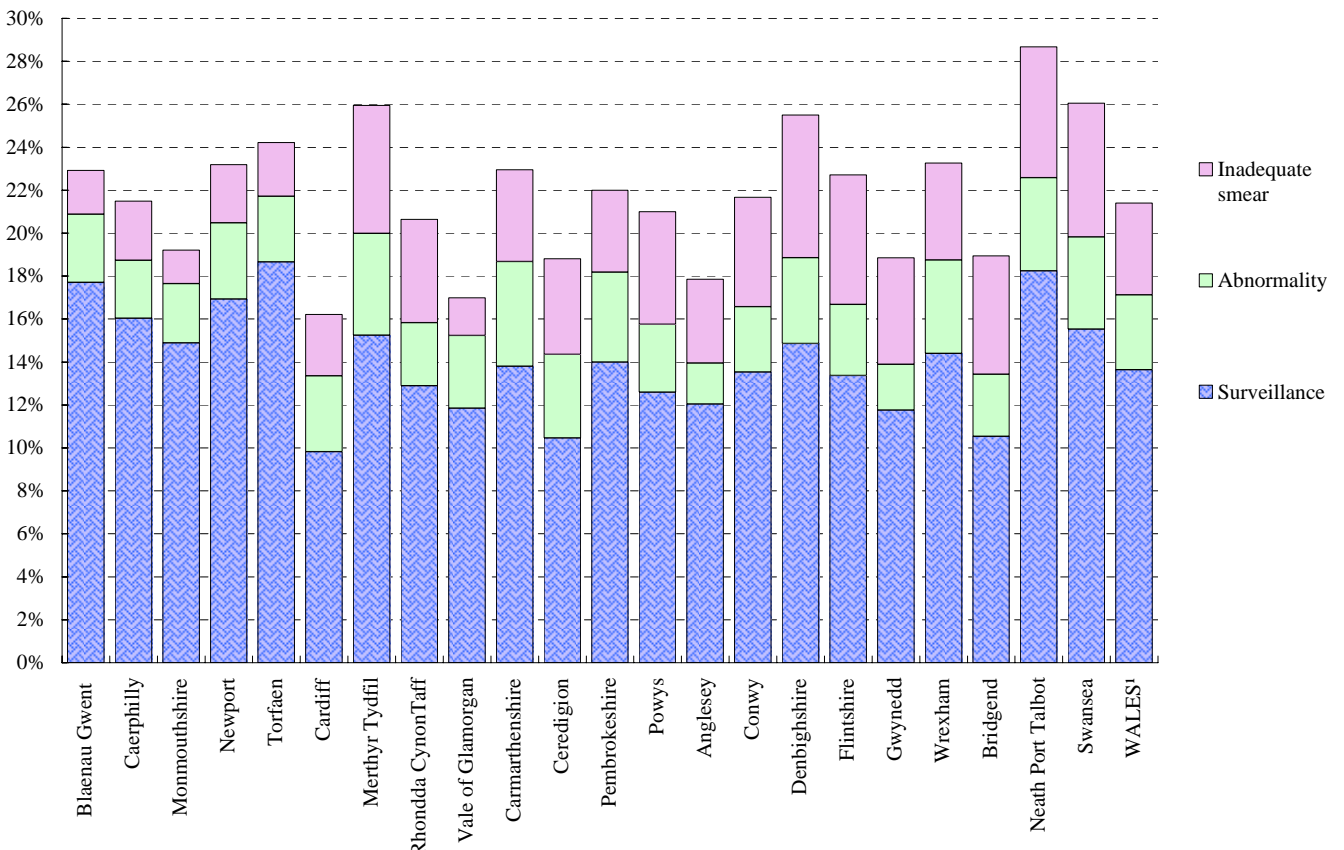
¹ A small proportion of women could not be allocated to a Local Health Board, but are shown in the total for Wales.

Figure 4a: Percentage of invitations to women aged 20-64, by type of invitation and Local Health Board



The total number of invitations (age 20-64) where the type of invitation was "repeat advised within 3 years" is just under 59,400 (or 21.4% of all invitations). The chart below (Figure 4b) shows the different reasons for the early recall.

Figure 4b: Percentage of invitations to women aged 20-64, where repeat advised in less than 3 years, by reason and Local Health Board



¹ A small proportion of women could not be allocated to a Local Health Board, but are shown in the total for Wales.

Table 5a: Number of women tested¹, by type of invitation and age at test

Source: KC53, part C

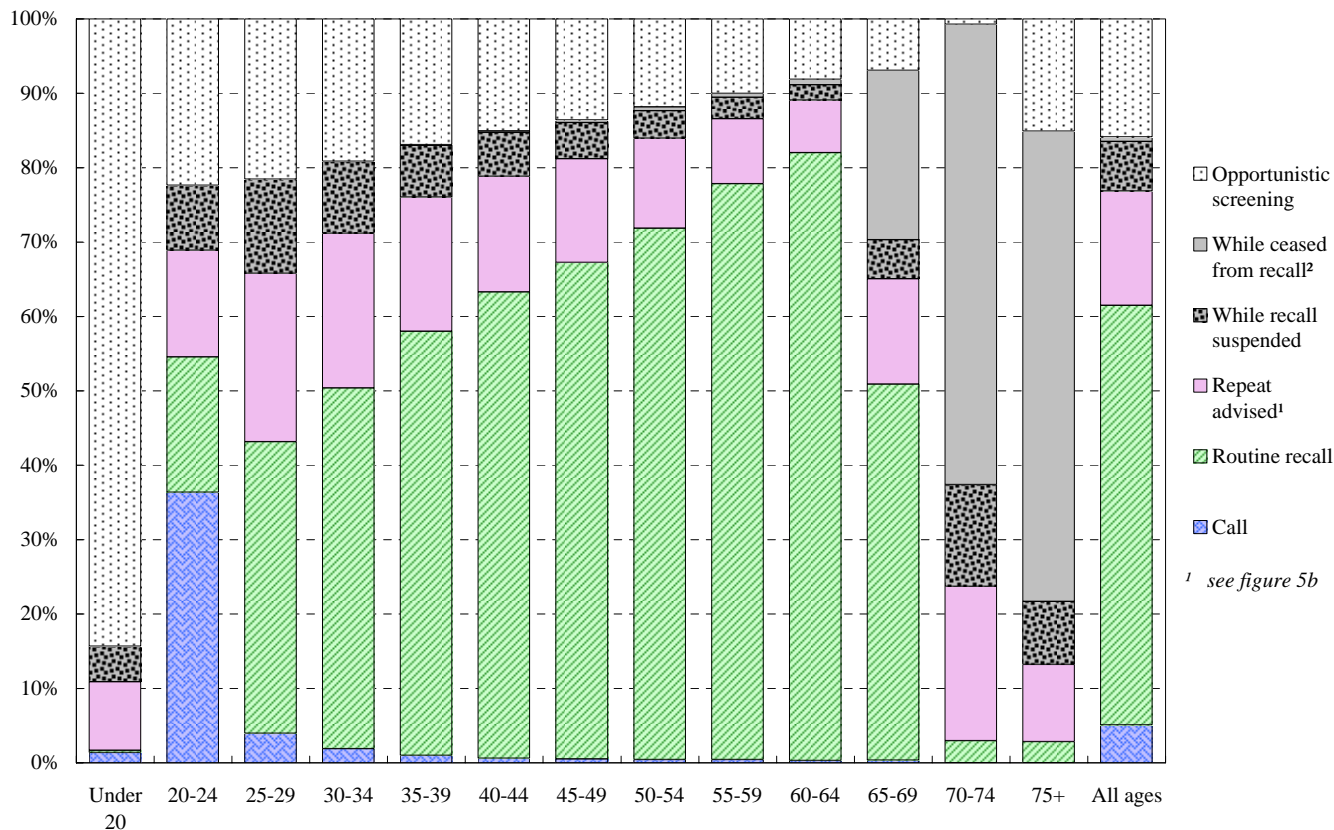
WALES	Total	Call	Routine recall	Repeat advised for reasons of			While recall suspended	While ceased from recall ²	Opportunistic screening
				Surveillance	Abnormality	Inadequate			
All ages	207,491	10,557	117,038	20,406	5,644	5,820	13,795	1,265	32,966
Ages 20-64	204,339	10,544	115,803	20,098	5,579	5,751	13,605	481	32,478
Ages 25-64	181,182	2,127	111,587	18,632	4,390	5,086	11,586	481	27,293
0-19	358	5	1	10	19	4	17	-	302
20-24	23,157	8,417	4,216	1,466	1,189	665	2,019	-	5,185
25-29	21,637	859	8,479	3,127	889	883	2,733	4	4,663
30-34	26,227	492	12,726	3,708	760	976	2,532	15	5,018
35-39	28,724	282	16,377	3,516	736	926	2,006	20	4,861
40-44	26,903	167	16,865	2,763	667	745	1,585	54	4,057
45-49	22,334	111	14,909	2,040	528	550	1,085	72	3,039
50-54	20,840	87	14,886	1,658	425	439	771	106	2,468
55-59	20,057	88	15,525	1,189	244	319	574	105	2,013
60-64	14,460	41	11,820	631	141	248	300	105	1,174
65-69	2,418	8	1,223	237	43	62	127	550	168
70-74	270	-	8	52	1	3	37	167	2
75+	106	-	3	9	2	-	9	67	16

Table 5b: Percentage of women tested¹, by type of invitation and age at test

WALES	Total	Call	Routine recall	Repeat advised for reasons of			While recall suspended	While ceased from recall ²	Opportunistic screening
				Surveillance	Abnormality	Inadequate			
All ages	100%	5.1%	56.4%	9.8%	2.7%	2.8%	6.6%	0.6%	15.9%
Ages 20-64	100%	5.2%	56.7%	9.8%	2.7%	2.8%	6.7%	0.2%	15.9%
Ages 25-64	100%	1.2%	61.6%	10.3%	2.4%	2.8%	6.4%	0.3%	15.1%
0-19	100%	1.4%	0.3%	2.8%	5.3%	1.1%	4.7%	0.0%	84.4%
20-24	100%	36.3%	18.2%	6.3%	5.1%	2.9%	8.7%	0.0%	22.4%
25-29	100%	4.0%	39.2%	14.5%	4.1%	4.1%	12.6%	0.0%	21.6%
30-34	100%	1.9%	48.5%	14.1%	2.9%	3.7%	9.7%	0.1%	19.1%
35-39	100%	1.0%	57.0%	12.2%	2.6%	3.2%	7.0%	0.1%	16.9%
40-44	100%	0.6%	62.7%	10.3%	2.5%	2.8%	5.9%	0.2%	15.1%
45-49	100%	0.5%	66.8%	9.1%	2.4%	2.5%	4.9%	0.3%	13.6%
50-54	100%	0.4%	71.4%	8.0%	2.0%	2.1%	3.7%	0.5%	11.8%
55-59	100%	0.4%	77.4%	5.9%	1.2%	1.6%	2.9%	0.5%	10.0%
60-64	100%	0.3%	81.7%	4.4%	1.0%	1.7%	2.1%	0.7%	8.1%
65-69	100%	0.3%	50.6%	9.8%	1.8%	2.6%	5.3%	22.7%	6.9%
70-74	100%	0.0%	3.0%	19.3%	0.4%	1.1%	13.7%	61.9%	0.7%
75+	100%	0.0%	2.8%	8.5%	1.9%	0.0%	8.5%	63.2%	15.1%

NOTES:¹ Most recent test in year² From 2003/2004, this is a new category for smears previously classed as opportunistic screening

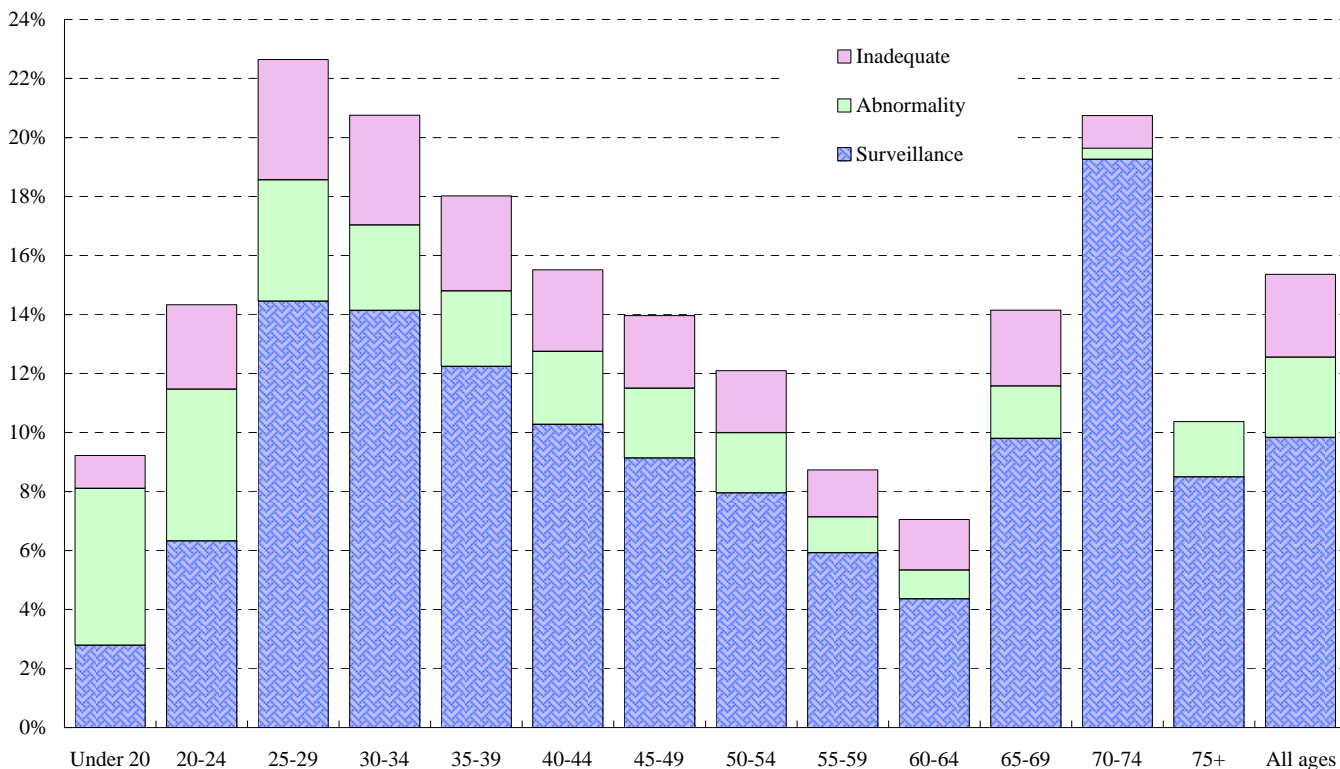
Figure 5a: Percentage of women tested, by type of invitation and age



¹ see figure 5b

The total number of women (all ages) tested where the type of invitation was "repeat advised within 3 years" is just under 31,900 (or 15.3% of all tests). The chart below (Figure 5b) shows the different reasons for the early recall.

Figure 5b: Percentage of women tested, where repeat advised within 3 years, by reason and age



NOTES:

¹ Most recent test in year

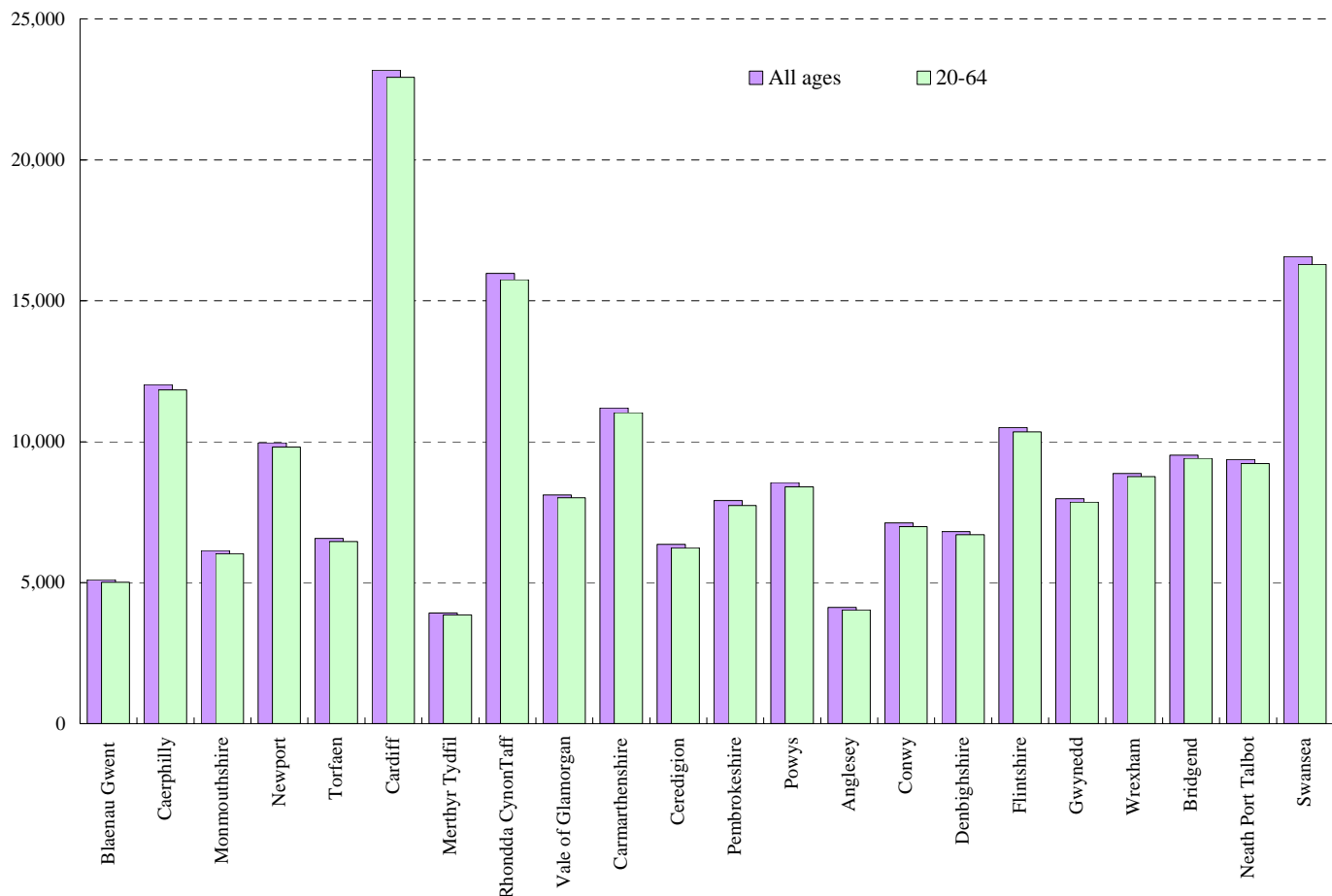
² From 2003/2004, this is a new category for smears previously classed as opportunistic screening

Table 6: Number of women tested¹ in the year, by Local Health Board (LHB)

Source: KC53, part C

Local Health Board	Under 20	20-24	25-29	30-34	35-39	40-44	45-49	50-54	55-59	60-64	65-69	70+	20-64	25-64	All ages
Blaenau Gwent	14	539	531	706	757	661	527	450	483	359	65	11	5,013	4,474	5,103
Caerphilly	41	1,325	1,294	1,641	1,720	1,532	1,286	1,197	1,115	731	120	19	11,841	10,516	12,021
Monmouthshire	13	452	514	719	911	848	710	706	715	459	72	18	6,034	5,582	6,137
Newport	26	1,124	1,035	1,252	1,499	1,309	1,067	875	960	687	105	26	9,808	8,684	9,965
Torfaen	19	724	694	833	929	847	710	679	591	456	69	14	6,463	5,739	6,565
Cardiff	40	4,048	3,106	3,084	3,000	2,784	2,190	1,949	1,634	1,134	193	17	22,929	18,881	23,179
Merthyr Tydfil	13	439	419	489	566	567	400	392	341	245	49	6	3,858	3,419	3,926
Rhondda CynonTaff	22	1,837	1,772	2,178	2,258	2,029	1,683	1,492	1,435	1,072	173	20	15,756	13,919	15,971
Vale of Glamorgan	8	771	859	1,059	1,093	1,116	943	822	774	574	80	14	8,011	7,240	8,113
Carmarthenshire	14	1,085	981	1,271	1,517	1,506	1,318	1,252	1,197	904	141	17	11,031	9,946	11,203
Ceredigion	22	846	550	619	776	710	722	756	752	504	85	21	6,235	5,389	6,363
Pembrokeshire	14	627	693	925	1,082	1,082	848	896	920	663	128	41	7,736	7,109	7,919
Powys	8	664	753	1,004	1,170	1,119	1,020	1,016	945	710	125	19	8,401	7,737	8,553
Anglesey	4	363	364	474	516	519	439	468	527	368	67	15	4,038	3,675	4,124
Conwy	4	571	600	873	1,007	942	838	741	788	626	117	15	6,986	6,415	7,122
Denbighshire	7	560	682	811	982	942	739	735	749	501	88	11	6,701	6,141	6,807
Flintshire	16	965	1,099	1,395	1,514	1,390	1,104	1,091	1,090	704	129	12	10,352	9,387	10,509
Gwynedd	16	967	787	1,014	1,049	971	851	766	771	682	89	16	7,858	6,891	7,979
Wrexham	6	988	929	1,220	1,272	1,114	942	927	819	555	92	10	8,766	7,778	8,874
Bridgend	8	910	968	1,241	1,350	1,320	1,035	944	972	678	88	8	9,418	8,508	9,522
Neath Port Talbot	15	993	1,037	1,179	1,306	1,257	1,025	943	862	629	106	12	9,231	8,238	9,364
Swansea	25	2,173	1,778	2,035	2,189	2,136	1,796	1,587	1,497	1,105	216	33	16,296	14,123	16,570
WALES²	358	23,157	21,637	26,227	28,724	26,903	22,334	20,840	20,057	14,460	2,418	376	204,339	181,182	207,491

Figure 6: Number of women tested in the year¹, by Local Health Board



NOTES:

¹ Most recent test in year

² A small proportion of women could not be allocated to a Local Health Board, but are shown in the total for Wales.

Table 7a: Number of women aged 20-64 tested¹ in the year, by type of invitation and Local Health Board (LHB)

KC53, part C

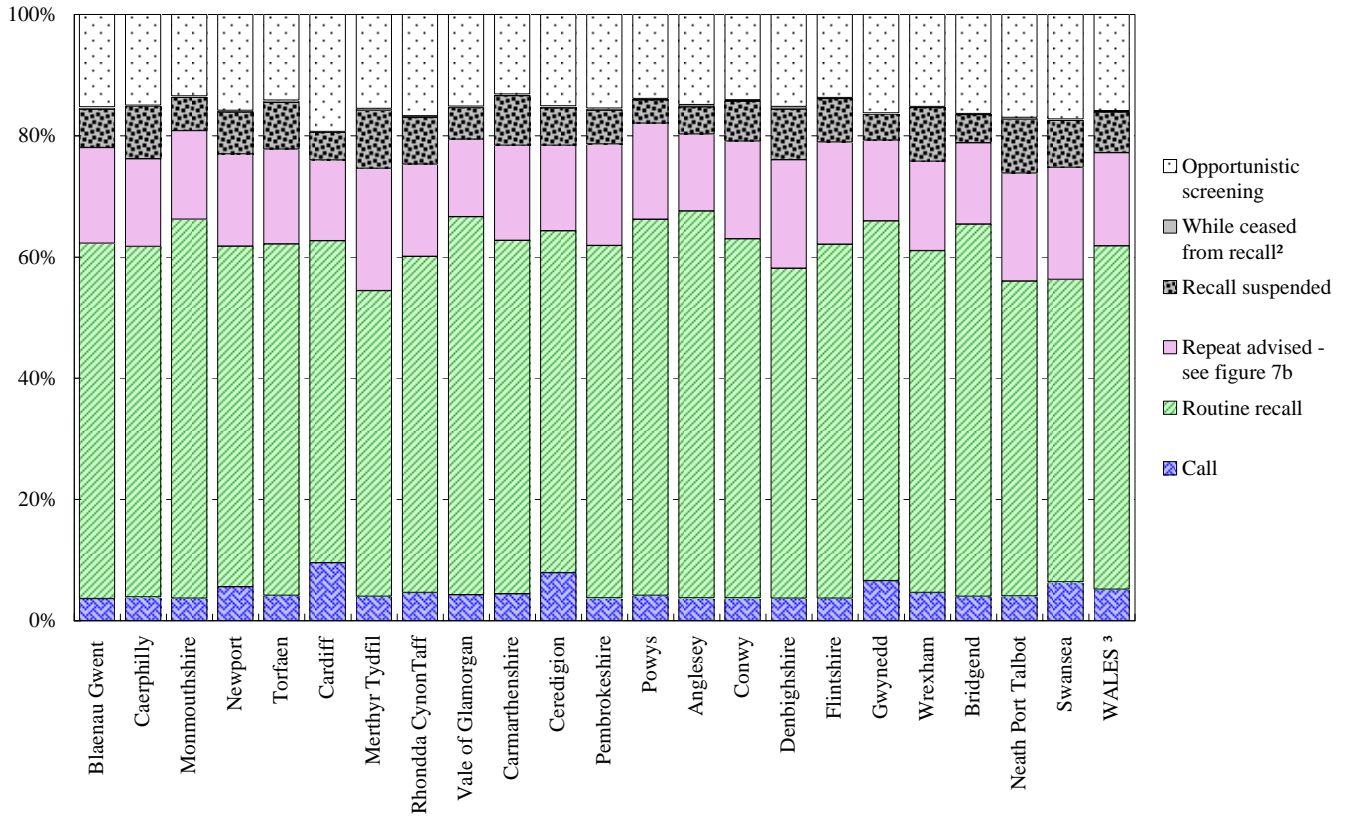
Local Health Board	Total	Call	Routine	Repeat in three years for reasons of			Recall suspended	While ceased from recall ²	Opportunistic screening
			recall	Surveillance	Abnormality	Inadequate			
Blaenau Gwent	5,013	182	2,939	627	118	47	317	17	766
Caerphilly	11,841	465	6,845	1,299	253	160	1,028	18	1,773
Monmouthshire	6,034	224	3,770	704	135	44	332	13	812
Newport	9,808	548	5,511	1,132	244	115	680	26	1,552
Torfaen	6,463	269	3,749	802	142	65	496	27	913
Cardiff	22,929	2,191	12,180	1,880	727	440	1,057	26	4,428
Merthyr Tydfil	3,858	155	1,946	458	122	198	368	12	599
Rhondda CynonTaff	15,756	731	8,740	1,503	344	545	1,217	38	2,638
Vale of Glamorgan	8,011	344	4,993	743	213	67	419	18	1,214
Carmarthenshire	11,031	489	6,431	1,021	412	297	902	29	1,450
Ceredigion	6,235	495	3,516	491	208	178	387	19	941
Pembrokeshire	7,736	290	4,499	865	255	173	434	24	1,196
Powys	8,401	350	5,211	875	177	281	322	17	1,168
Anglesey	4,038	152	2,576	322	57	134	181	15	601
Conwy	6,986	262	4,137	664	181	282	461	14	985
Denbighshire	6,701	249	3,648	638	227	333	557	29	1,020
Flintshire	10,352	382	6,047	1,006	274	462	741	20	1,420
Gwynedd	7,858	518	4,664	615	137	295	340	13	1,276
Wrexham	8,766	406	4,943	786	259	248	776	15	1,333
Bridgend	9,418	379	5,782	767	217	280	435	17	1,541
Neath Port Talbot	9,231	374	4,798	1,004	277	362	818	27	1,571
Swansea	16,296	1,037	8,133	1,768	569	678	1,259	41	2,811
WALES³	204,339	10,544	115,803	20,098	5,579	5,751	13,605	481	32,478

Table 7b: Percentage of women aged 20-64 tested¹ in the year, by type of invitation and Local Health Board (LHB)

Local Health Board	Total	Call	Routine	Repeat in three years for reasons of			Recall suspended	While ceased from recall ²	Opportunistic screening
			recall	Surveillance	Abnormality	Inadequate			
Blaenau Gwent	100%	3.6%	58.6%	12.5%	2.4%	0.9%	6.3%	0.3%	15.3%
Caerphilly	100%	3.9%	57.8%	11.0%	2.1%	1.4%	8.7%	0.2%	15.0%
Monmouthshire	100%	3.7%	62.5%	11.7%	2.2%	0.7%	5.5%	0.2%	13.5%
Newport	100%	5.6%	56.2%	11.5%	2.5%	1.2%	6.9%	0.3%	15.8%
Torfaen	100%	4.2%	58.0%	12.4%	2.2%	1.0%	7.7%	0.4%	14.1%
Cardiff	100%	9.6%	53.1%	8.2%	3.2%	1.9%	4.6%	0.1%	19.3%
Merthyr Tydfil	100%	4.0%	50.4%	11.9%	3.2%	5.1%	9.5%	0.3%	15.5%
Rhondda CynonTaff	100%	4.6%	55.5%	9.5%	2.2%	3.5%	7.7%	0.2%	16.7%
Vale of Glamorgan	100%	4.3%	62.3%	9.3%	2.7%	0.8%	5.2%	0.2%	15.2%
Carmarthenshire	100%	4.4%	58.3%	9.3%	3.7%	2.7%	8.2%	0.3%	13.1%
Ceredigion	100%	7.9%	56.4%	7.9%	3.3%	2.9%	6.2%	0.3%	15.1%
Pembrokeshire	100%	3.7%	58.2%	11.2%	3.3%	2.2%	5.6%	0.3%	15.5%
Powys	100%	4.2%	62.0%	10.4%	2.1%	3.3%	3.8%	0.2%	13.9%
Anglesey	100%	3.8%	63.8%	8.0%	1.4%	3.3%	4.5%	0.4%	14.9%
Conwy	100%	3.8%	59.2%	9.5%	2.6%	4.0%	6.6%	0.2%	14.1%
Denbighshire	100%	3.7%	54.4%	9.5%	3.4%	5.0%	8.3%	0.4%	15.2%
Flintshire	100%	3.7%	58.4%	9.7%	2.6%	4.5%	7.2%	0.2%	13.7%
Gwynedd	100%	6.6%	59.4%	7.8%	1.7%	3.8%	4.3%	0.2%	16.2%
Wrexham	100%	4.6%	56.4%	9.0%	3.0%	2.8%	8.9%	0.2%	15.2%
Bridgend	100%	4.0%	61.4%	8.1%	2.3%	3.0%	4.6%	0.2%	16.4%
Neath Port Talbot	100%	4.1%	52.0%	10.9%	3.0%	3.9%	8.9%	0.3%	17.0%
Swansea	100%	6.4%	49.9%	10.8%	3.5%	4.2%	7.7%	0.3%	17.2%
WALES³	100%	5.2%	56.7%	9.8%	2.7%	2.8%	6.7%	0.2%	15.9%

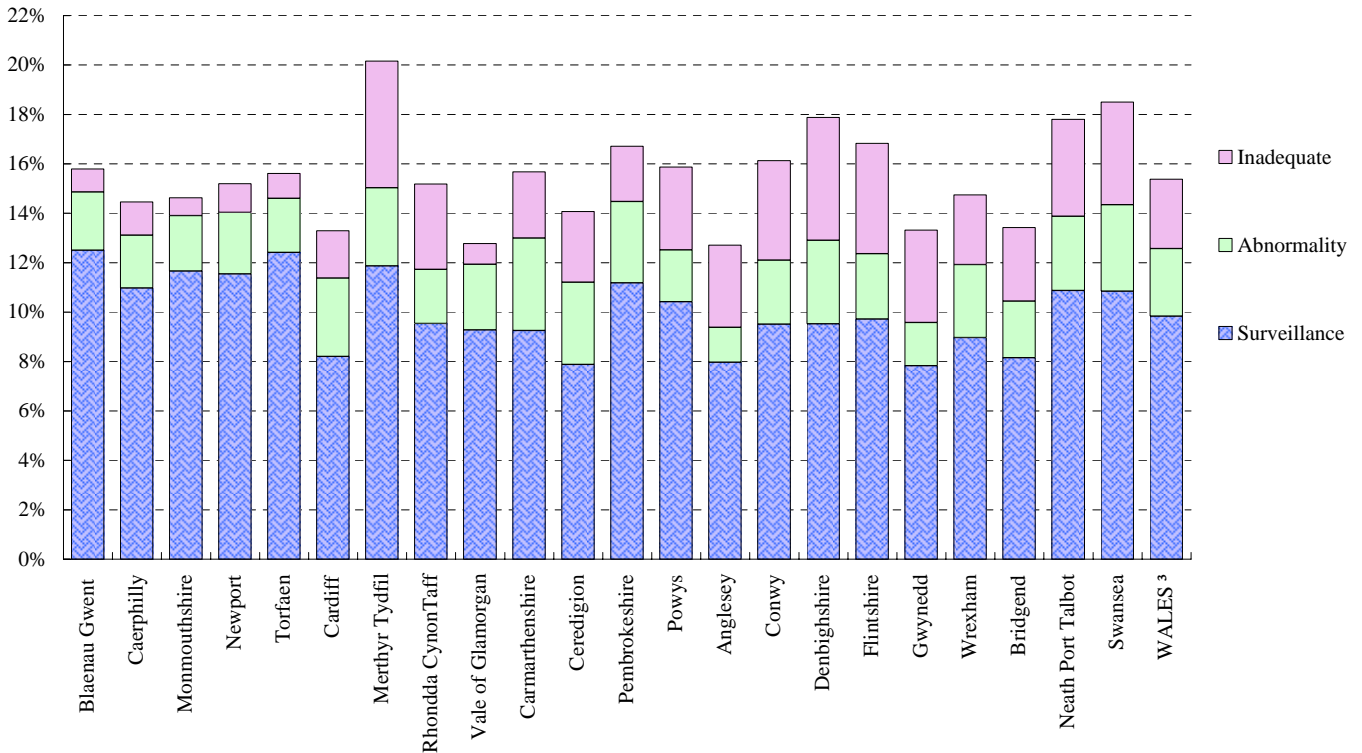
NOTES:¹ Most recent test in year² From 2003/2004, this is a new category for smears previously classed as opportunistic screening³ A small proportion of women could not be allocated to a Local Health Board, but are shown in the total for Wales.

Figure 7a: Percentage of women aged 20-64 tested, by type of invitation and Local Health Board



The total number of women (age 20-64) tested where the type of invitation was "repeat advised within 3 years" is just over 31,400 (or 15.4% of all tests). The chart below (Figure 7b) shows the different reasons for the early recall.

Figure 7b: Percentage of women aged 20-64 tested, where repeat advised within 3 years, by reason and Local Health Board



NOTES:

¹ Most recent test in year

² From 2003/2004, this is a new category for smears previously classed as opportunistic screening

³ A small proportion of women could not be allocated to a Local Health Board, but are shown in the total for Wales.

Table 8a: Number of test results^{1,2}, by age

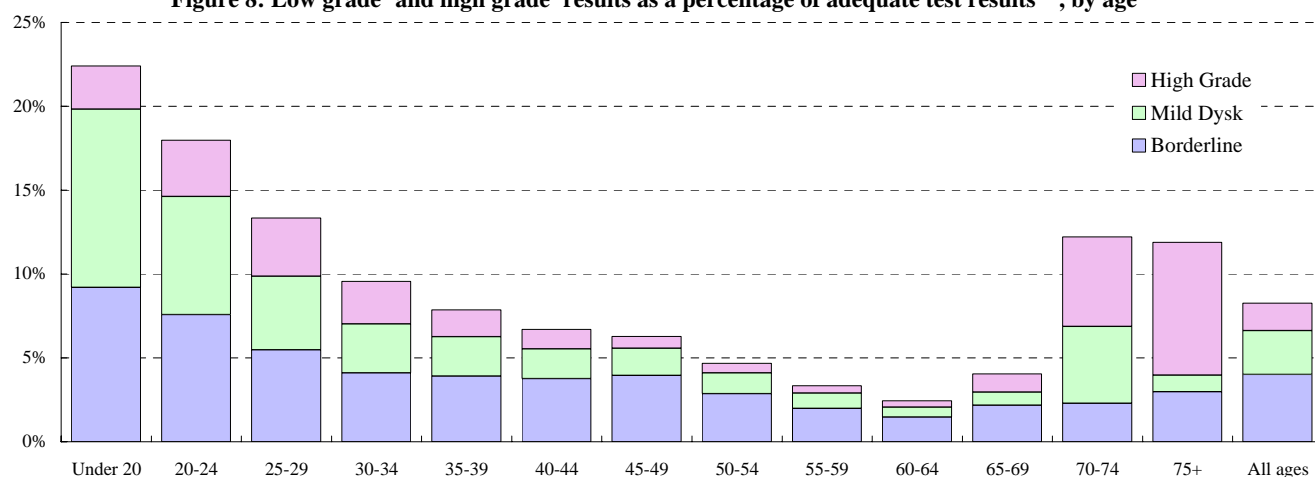
Source: KC53, part D

WALES	Total ²	Negative	Borderline	Mild dyskaryosis	Moderate dyskaryosis	Positive ³
All ages	201,311	184,665	8,057	5,269	1,811	1,509
Ages 20-64	198,206	181,779	7,964	5,200	1,789	1,474
Ages 25-64	176,112	163,658	6,288	3,648	1,297	1,221
Under 20	348	270	32	37	7	2
20-24	22,094	18,121	1,676	1,552	492	253
25-29	20,762	17,993	1,136	912	409	312
30-34	25,326	22,904	1,040	738	333	311
35-39	27,840	25,650	1,089	656	216	229
40-44	26,136	24,385	982	465	144	160
45-49	21,773	20,408	859	355	70	81
50-54	20,396	19,442	583	255	54	62
55-59	19,663	19,006	389	183	45	40
60-64	14,216	13,870	210	84	26	26
65-69	2,394	2,297	52	19	11	15
70-74	262	230	6	12	2	12
75+	101	89	3	1	2	6

Table 8b: Percentage of test results^{1,2}, by age

WALES	Total ²	Negative	Borderline	Mild dyskaryosis	Moderate dyskaryosis	Positive ³
All ages	100%	91.7%	4.0%	2.6%	0.9%	0.7%
Ages 20-64	100%	91.7%	4.0%	2.6%	0.9%	0.7%
Ages 25-64	100%	92.9%	3.6%	2.1%	0.7%	0.7%
Under 20	100%	77.6%	9.2%	10.6%	2.0%	0.6%
20-24	100%	82.0%	7.6%	7.0%	2.2%	1.1%
25-29	100%	86.7%	5.5%	4.4%	2.0%	1.5%
30-34	100%	90.4%	4.1%	2.9%	1.3%	1.2%
35-39	100%	92.1%	3.9%	2.4%	0.8%	0.8%
40-44	100%	93.3%	3.8%	1.8%	0.6%	0.6%
45-49	100%	93.7%	3.9%	1.6%	0.3%	0.4%
50-54	100%	95.3%	2.9%	1.3%	0.3%	0.3%
55-59	100%	96.7%	2.0%	0.9%	0.2%	0.2%
60-64	100%	97.6%	1.5%	0.6%	0.2%	0.2%
65-69	100%	95.9%	2.2%	0.8%	0.5%	0.6%
70-74	100%	87.8%	2.3%	4.6%	0.8%	4.6%
75+	100%	88.1%	3.0%	1.0%	2.0%	5.9%

Figure 8: Low grade⁴ and high grade⁴ results as a percentage of adequate test results^{1,2}, by age



NOTES:

¹ Most severe result in year

² Excluding those women whose tests during the year were classified as 'inadequate'

³ 'Positive' includes results reported as 'severe dyskaryosis', 'severe dyskaryosis/?invasive carcinoma', or '?glandular neoplasia';

⁴ 'Low grade' results are 'borderline' or 'mild dyskaryosis' whilst 'High grade' results are 'moderate dyskaryosis' or 'positive'

Table 9a: Number of test results¹, of women aged 20-64, by Local Health Board (LHB)

Source: KC53, part D

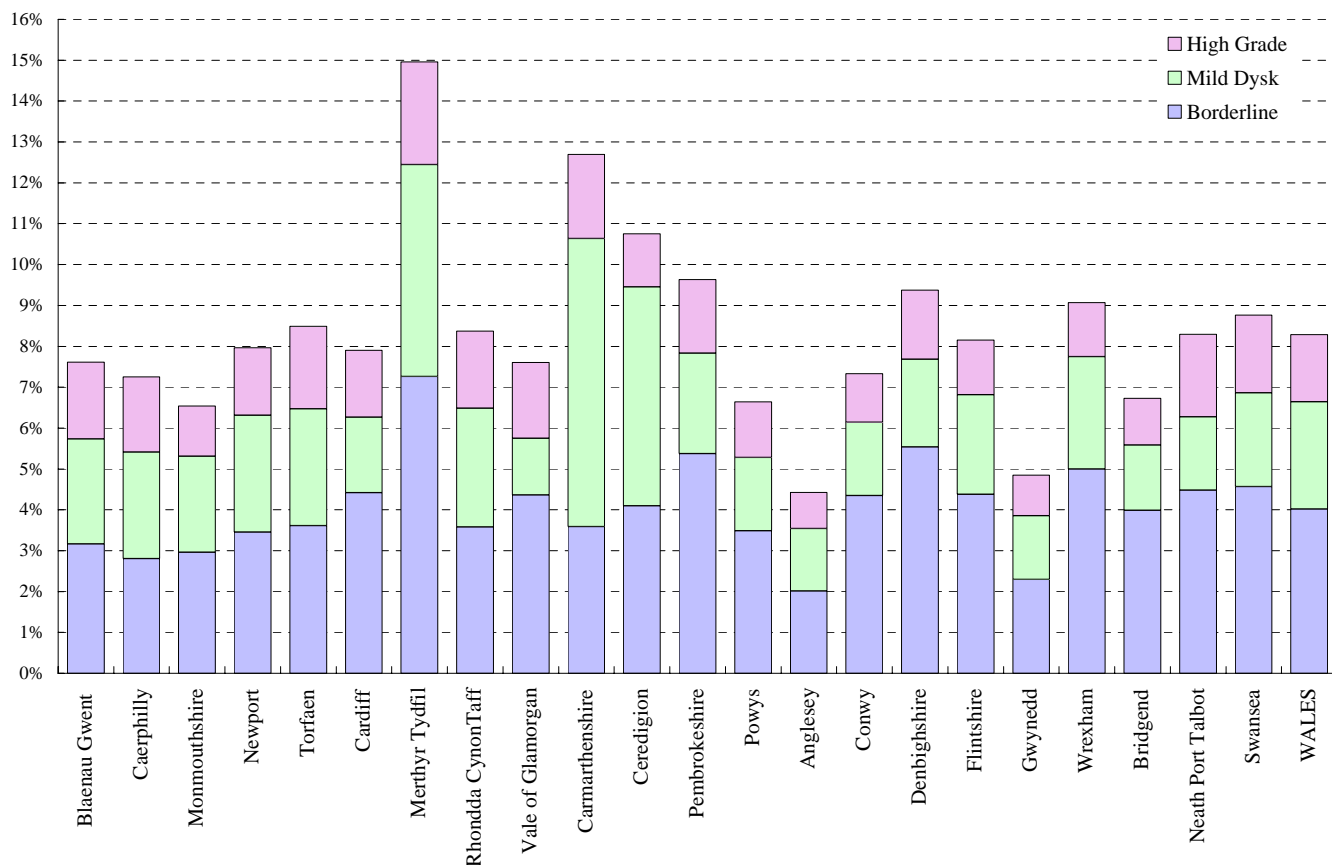
Local Health Board	Total²	Negative	Borderline	Mild dyskaryosis	Moderate dyskaryosis	Positive³
Blaenau Gwent	4,991	4,611	158	128	50	44
Caerphilly	11,734	10,883	329	306	136	80
Monmouthshire	6,009	5,616	178	141	41	33
Newport	9,754	8,977	337	279	86	75
Torfaen	6,432	5,886	232	184	67	63
Cardiff	22,491	20,714	994	415	134	234
Merthyr Tydfil	3,704	3,150	269	192	62	31
Rhondda CynonTaff	15,214	13,940	545	441	152	136
Vale of Glamorgan	7,955	7,350	347	110	50	98
Carmarthenshire	10,509	9,175	377	741	155	61
Ceredigion	5,979	5,336	245	320	50	28
Pembrokeshire	7,497	6,775	403	184	94	41
Powys	8,071	7,535	281	145	60	50
Anglesey	3,931	3,757	79	60	20	15
Conwy	6,644	6,157	289	119	42	37
Denbighshire	6,232	5,648	345	134	55	50
Flintshire	9,784	8,986	428	239	85	46
Gwynedd	7,530	7,165	173	117	39	36
Wrexham	8,571	7,794	428	236	67	46
Bridgend	9,081	8,470	362	145	58	46
Neath Port Talbot	8,911	8,172	399	160	93	87
Swansea	15,677	14,303	716	359	174	125
WALES⁵	198,206	181,779	7,964	5,200	1,789	1,474

Table 9b: Percentage of test results¹, of women aged 20-64, by Local Health Board (LHB)

Local Health Board	Total²	Negative	Borderline	Mild dyskaryosis	Moderate dyskaryosis	Positive³
Blaenau Gwent	100%	92.4%	3.2%	2.6%	1.0%	0.9%
Caerphilly	100%	92.7%	2.8%	2.6%	1.2%	0.7%
Monmouthshire	100%	93.5%	3.0%	2.3%	0.7%	0.5%
Newport	100%	92.0%	3.5%	2.9%	0.9%	0.8%
Torfaen	100%	91.5%	3.6%	2.9%	1.0%	1.0%
Cardiff	100%	92.1%	4.4%	1.8%	0.6%	1.0%
Merthyr Tydfil	100%	85.0%	7.3%	5.2%	1.7%	0.8%
Rhondda CynonTaff	100%	91.6%	3.6%	2.9%	1.0%	0.9%
Vale of Glamorgan	100%	92.4%	4.4%	1.4%	0.6%	1.2%
Carmarthenshire	100%	87.3%	3.6%	7.1%	1.5%	0.6%
Ceredigion	100%	89.2%	4.1%	5.4%	0.8%	0.5%
Pembrokeshire	100%	90.4%	5.4%	2.5%	1.3%	0.5%
Powys	100%	93.4%	3.5%	1.8%	0.7%	0.6%
Anglesey	100%	95.6%	2.0%	1.5%	0.5%	0.4%
Conwy	100%	92.7%	4.3%	1.8%	0.6%	0.6%
Denbighshire	100%	90.6%	5.5%	2.2%	0.9%	0.8%
Flintshire	100%	91.8%	4.4%	2.4%	0.9%	0.5%
Gwynedd	100%	95.2%	2.3%	1.6%	0.5%	0.5%
Wrexham	100%	90.9%	5.0%	2.8%	0.8%	0.5%
Bridgend	100%	93.3%	4.0%	1.6%	0.6%	0.5%
Neath Port Talbot	100%	91.7%	4.5%	1.8%	1.0%	1.0%
Swansea	100%	91.2%	4.6%	2.3%	1.1%	0.8%
WALES⁵	100%	91.7%	4.0%	2.6%	0.9%	0.7%

NOTES:¹ Most severe result in year² Excluding those women whose tests during the year were classified as 'inadequate'³ 'Positive' includes results reported as 'severe dyskaryosis', 'severe dyskaryosis/?invasive carcinoma', or '?glandular neoplasia';⁴ 'Low grade' results are 'borderline' or 'mild dyskaryosis' whilst 'High grade' results are 'moderate dyskaryosis' or 'positive'⁵ A small proportion of women could not be allocated to a Local Health Board, but are shown in the total for Wales.

Figure 9: Low grade⁴ and high grade⁴ results as a percentage of adequate test results^{1,2}, by Local Health Board



NOTES:

¹ Most severe result in year

² Excluding those women whose tests during the year were classified as 'inadequate'

³ 'Positive' includes results reported as 'severe dyskaryosis', 'severe dyskaryosis/?invasive carcinoma', or '?glandular neoplasia';

⁴ 'Low grade' results are 'borderline' or 'mild dyskaryosis' whilst 'High grade' results are 'moderate dyskaryosis' or 'positive'

⁵ A small proportion of women could not be allocated to a Local Health Board, but are shown in the total for Wales.

Table 10: Number of smears examined, by pathology laboratories and source of smear

Source: KC61, part A

Laboratory		Total	NHS			Private	Other
			GP	community clinic	GUM clinic		
Bronglais	Total smears	408	-	-	-	408	-
	No. inadequate	24	-	-	-	24	-
	% inadequate	5.9%	0.0%	0.0%	0.0%	5.9%	0.0%
	No. adequate	384	-	-	-	384	-
	No. high grade ²	17	-	-	-	17	-
	% high grade ¹	4.4%	0.0%	0.0%	0.0%	4.4%	0.0%
Glan Clwyd	Total smears	15,123	12,953	879	19	1,272	-
	No. inadequate	2,110	1,854	137	5	114	-
	% inadequate	14.0%	14.3%	15.6%	26.3%	9.0%	0.0%
	No. adequate	13,013	11,099	742	14	1,158	-
	No. high grade ²	187	142	8	-	37	-
	% high grade ¹	1.4%	1.3%	1.1%	0.0%	3.2%	0.0%
Gwynedd	Total smears	15,968	13,401	1,350	2	1,174	7
	No. inadequate	1,136	936	106	-	88	1
	% inadequate	7.1%	7.0%	7.9%	0.0%	7.5%	14.3%
	No. adequate	14,832	12,465	1,244	2	1,086	6
	No. high grade ²	158	125	9	-	24	-
	% high grade ¹	1.1%	1.0%	0.7%	0.0%	2.2%	0.0%
Llandough	Total smears	34,643	29,633	1,596	403	2,994	8
	No. inadequate	954	845	30	5	74	-
	% inadequate	2.8%	2.9%	1.9%	1.2%	2.5%	0.0%
	No. adequate	33,689	28,788	1,566	398	2,920	8
	No. high grade ²	798	321	25	7	445	-
	% high grade ¹	2.4%	1.1%	1.6%	1.8%	15.2%	0.0%
Prince Charles	Total smears	9,237	6,089	1,825	-	1,322	1
	No. inadequate	1,086	699	259	-	128	-
	% inadequate	11.8%	11.5%	14.2%	0.0%	9.7%	0.0%
	No. adequate	8,151	5,390	1,566	-	1,194	1
	No. high grade ²	190	109	34	-	47	-
	% high grade ¹	2.3%	2.0%	2.2%	0.0%	3.9%	0.0%
Princess of Wales	Total smears	10,609	8,520	1,428	39	617	1
	No. inadequate	936	736	170	4	26	-
	% inadequate	8.8%	8.6%	11.9%	10.3%	4.2%	0.0%
	No. adequate	9,673	7,784	1,258	35	591	1
	No. high grade ²	100	64	12	1	23	-
	% high grade ¹	1.0%	0.8%	1.0%	2.9%	3.9%	0.0%
Royal Glamorgan	Total smears	20,721	17,863	1,359	91	1,174	20
	No. inadequate	725	660	38	1	26	-
	% inadequate	3.5%	3.7%	2.8%	1.1%	2.2%	0.0%
	No. adequate	19,996	17,203	1,321	90	1,148	20
	No. high grade ²	427	250	16	5	153	-
	% high grade ¹	2.1%	1.5%	1.2%	5.6%	13.3%	0.0%

NOTES:¹ % high grade of all adequate results² 'High grade' includes results reported as 'moderate dyskaryosis', 'severe dyskaryosis', 'severe dyskaryosis/?invasive carcinoma', or '?glandular neoplasia'

Table 10: Number of smears examined, by pathology laboratories and source of smear (continued)

Source: KC61, part A

Laboratory		Total	NHS			Private	Other
			GP	community clinic	GUM clinic		
Royal Gwent	Total smears	38,839	32,034	3,186	4	3,615	-
	No. inadequate	353	263	23	-	67	-
	% inadequate	0.9%	0.8%	0.7%	0.0%	1.9%	0.0%
	No. adequate	38,486	31,771	3,163	4	3,548	-
	No. high grade ²	687	421	56	-	210	-
	% high grade ¹	1.8%	1.3%	1.8%	0.0%	5.9%	0.0%
Swansea	Total smears	32,466	27,575	1,755	30	3,089	4
	No. inadequate	2,480	2,168	153	4	155	-
	% inadequate	7.6%	7.9%	8.7%	13.3%	5.0%	0.0%
	No. adequate	29,986	25,407	1,602	26	2,934	4
	No. high grade ²	660	358	24	1	277	-
	% high grade ¹	2.2%	1.4%	1.5%	3.8%	9.4%	0.0%
West Wales	Total smears	19,219	16,305	1,372	1	1,534	7
	No. inadequate	1,716	1,489	128	-	98	1
	% inadequate	8.9%	9.1%	9.3%	0.0%	6.4%	14.3%
	No. adequate	17,503	14,816	1,244	1	1,436	6
	No. high grade ²	313	193	20	-	100	-
	% high grade ¹	1.8%	1.3%	1.6%	0.0%	7.0%	0.0%
Withybush	Total smears	8,400	7,290	386	3	721	-
	No. inadequate	570	479	41	1	49	-
	% inadequate	6.8%	6.6%	10.6%	33.3%	6.8%	0.0%
	No. adequate	7,830	6,811	345	2	672	-
	No. high grade ²	136	97	5	-	34	-
	% high grade ¹	1.7%	1.4%	1.4%	0.0%	5.1%	0.0%
Wrexham Maelor	Total smears	13,047	10,221	1,559	13	1,217	36
	No. inadequate	609	513	47	-	46	3
	% inadequate	4.7%	5.0%	3.0%	0.0%	3.8%	8.3%
	No. adequate	12,438	9,708	1,512	13	1,171	33
	No. high grade ²	157	97	11	1	48	-
	% high grade ¹	1.3%	1.0%	0.7%	7.7%	4.1%	0.0%
Shrewsbury	Total smears	4,432	4,062	181	1	161	7
	No. inadequate	558	502	35	-	14	-
	% inadequate	12.6%	12.4%	19.3%	0.0%	8.7%	0.0%
	No. adequate	3,874	3,560	146	1	147	7
	No. high grade ²	55	40	2	1	11	-
	% high grade ¹	1.4%	1.1%	1.4%	100.0%	7.5%	0.0%
WALES	Total smears	223,112	185,946	16,876	606	19,298	91
	No. inadequate	13,257	11,144	1,167	20	909	5
	% inadequate	5.9%	6.0%	6.9%	3.3%	4.7%	5.5%
	No. adequate	209,855	174,802	15,709	586	18,389	86
	No. high grade ²	3,885	2,217	222	16	1,426	-
	% high grade ¹	1.9%	1.3%	1.4%	2.7%	7.8%	0.0%

NOTES:

¹ % high grade of all adequate results

² 'High grade' includes results reported as 'moderate dyskaryosis', 'severe dyskaryosis', 'severe dyskaryosis/?invasive carcinoma', or '?glandular neoplasia'

Figure 10a: Percentage of inadequate smears, by laboratory

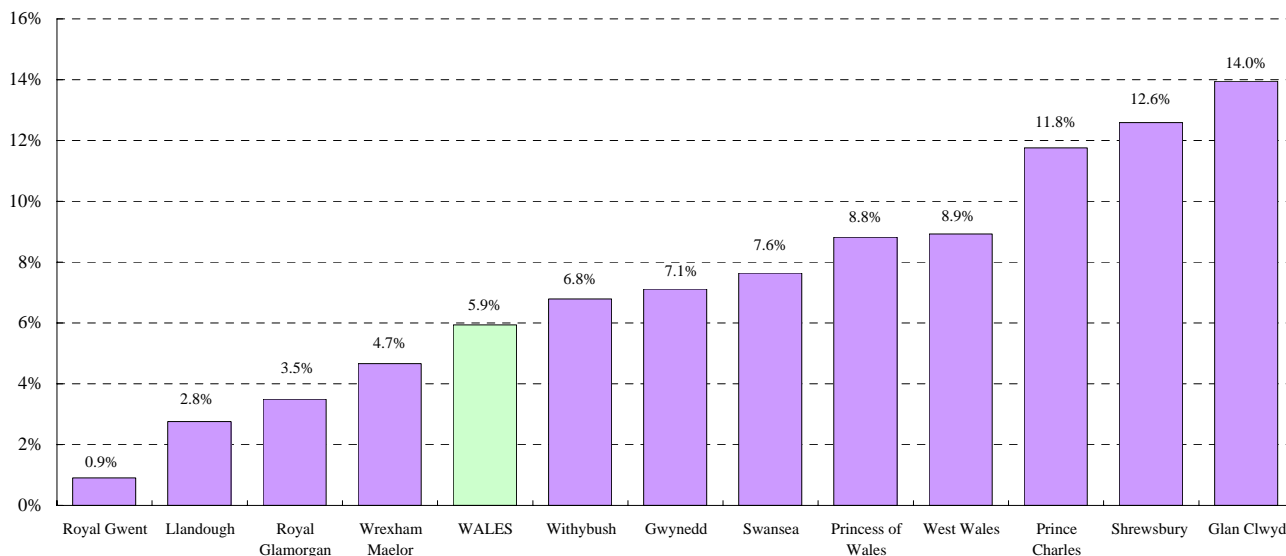


Figure 10b: Percentage of high grade smears^{1,2}, by laboratory

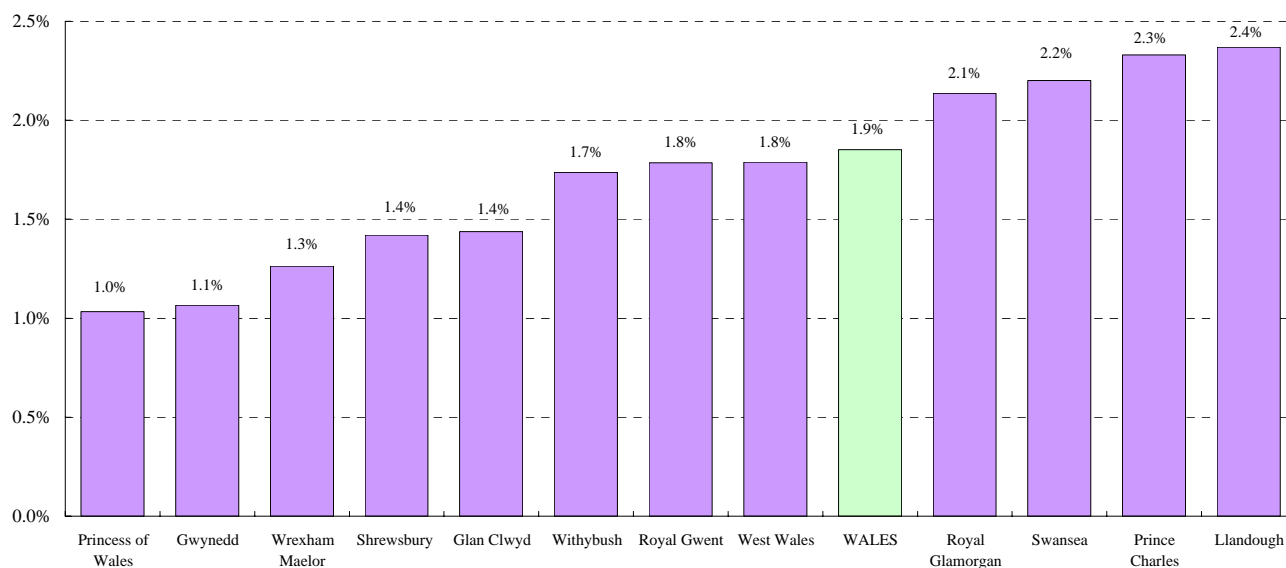
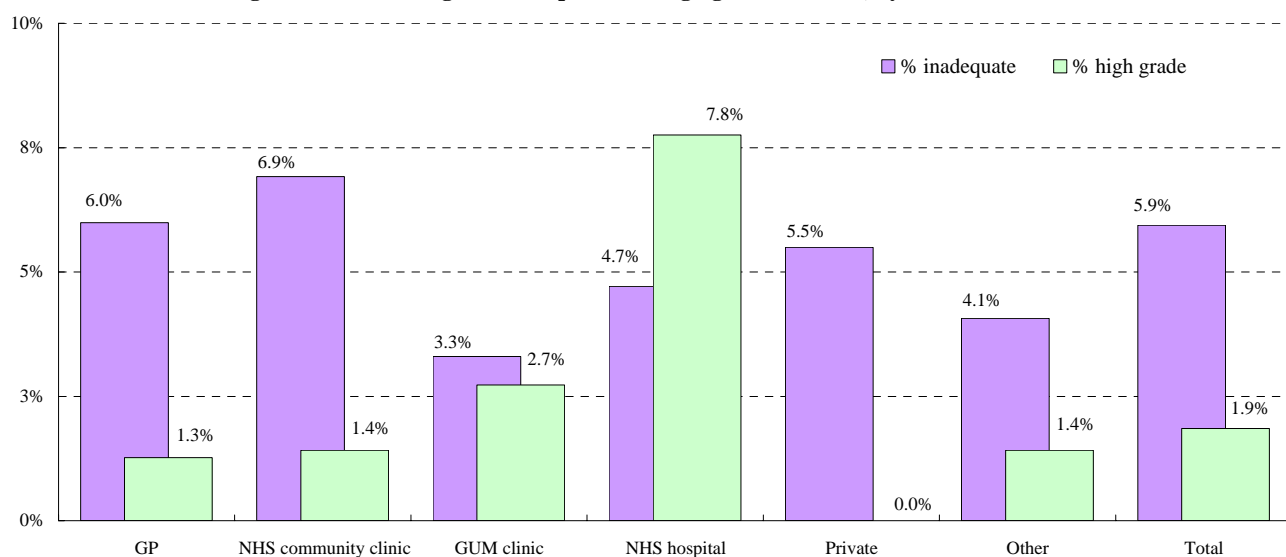


Figure 10c: Percentage of inadequate and high grade smears^{1,2}, by source of smear



NOTES:

¹ % high grade of all adequate results

² 'High grade' includes results reported as 'moderate dyskaryosis', 'severe dyskaryosis', 'severe dyskaryosis/?invasive carcinoma', or '?glandular neoplasia'

Table 11a: Result of test¹, by laboratory

Source: KC61, part B

Laboratory	Total		Borderline changes	Mild dyskaryosis	Moderate dyskaryosis	Severe dyskaryosis	Severe dyskaryosis	?Glandular neoplasia
	adequate smears	Negative					/?Invasive carcinoma	
Glan Clwyd	11,841	10,792	655	244	76	59	2	13
Gwynedd	13,709	13,042	314	219	72	52	1	9
Llandough	30,354	28,111	1,420	477	150	166	16	14
Prince Charles	6,956	6,010	479	324	89	53	1	-
Princess of Wales	9,042	8,501	339	126	45	23	2	6
Royal Glamorgan	18,524	17,449	440	369	164	93	2	7
Royal Gwent	34,934	32,511	1,110	836	259	199	6	13
Swansea	27,009	24,895	1,233	499	228	132	9	13
West Wales	16,060	14,289	600	958	145	52	3	13
Withybush	7,156	6,481	411	162	73	27	-	2
Wrexham	11,220	10,352	509	251	57	42	3	6
Shrewsbury	3,706	3,427	159	78	27	14	-	1
WALES	190,511	175,860	7,669	4,543	1,385	912	45	97

Table 11b: Result (as percentage of total adequate test)¹ by laboratory

Laboratory	Total		Borderline changes	Mild dyskaryosis	Moderate dyskaryosis	Severe dyskaryosis	Severe dyskaryosis	?Glandular neoplasia
	adequate smears	Negative					/?Invasive carcinoma	
Glan Clwyd	100%	91.1%	5.5%	2.1%	0.6%	0.5%	0.0%	0.1%
Gwynedd	100%	95.1%	2.3%	1.6%	0.5%	0.4%	0.0%	0.1%
Llandough	100%	92.6%	4.7%	1.6%	0.5%	0.5%	0.1%	0.0%
Prince Charles	100%	86.4%	6.9%	4.7%	1.3%	0.8%	0.0%	0.0%
Princess of Wales	100%	94.0%	3.7%	1.4%	0.5%	0.3%	0.0%	0.1%
Royal Glamorgan	100%	94.2%	2.4%	2.0%	0.9%	0.5%	0.0%	0.0%
Royal Gwent	100%	93.1%	3.2%	2.4%	0.7%	0.6%	0.0%	0.0%
Swansea	100%	92.2%	4.6%	1.8%	0.8%	0.5%	0.0%	0.0%
West Wales	100%	89.0%	3.7%	6.0%	0.9%	0.3%	0.0%	0.1%
Withybush	100%	90.6%	5.7%	2.3%	1.0%	0.4%	0.0%	0.0%
Wrexham	100%	92.3%	4.5%	2.2%	0.5%	0.4%	0.0%	0.1%
Shrewsbury	100%	92.5%	4.3%	2.1%	0.7%	0.4%	0.0%	0.0%
WALES	100%	92.3%	4.0%	2.4%	0.7%	0.5%	0.0%	0.1%

NOTES:¹ Results of smears from GP and NHS community clinics only

Figure 11a: Result of test¹, by laboratory

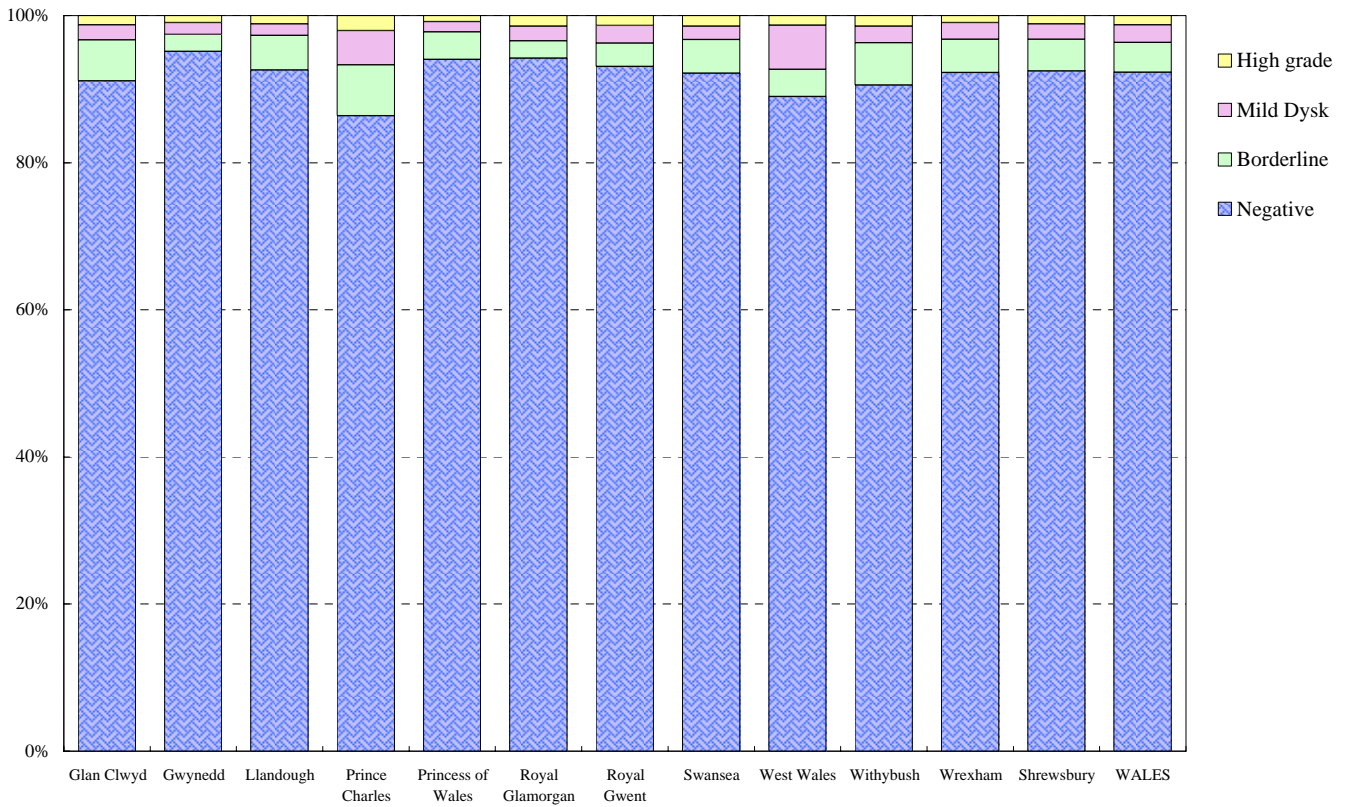
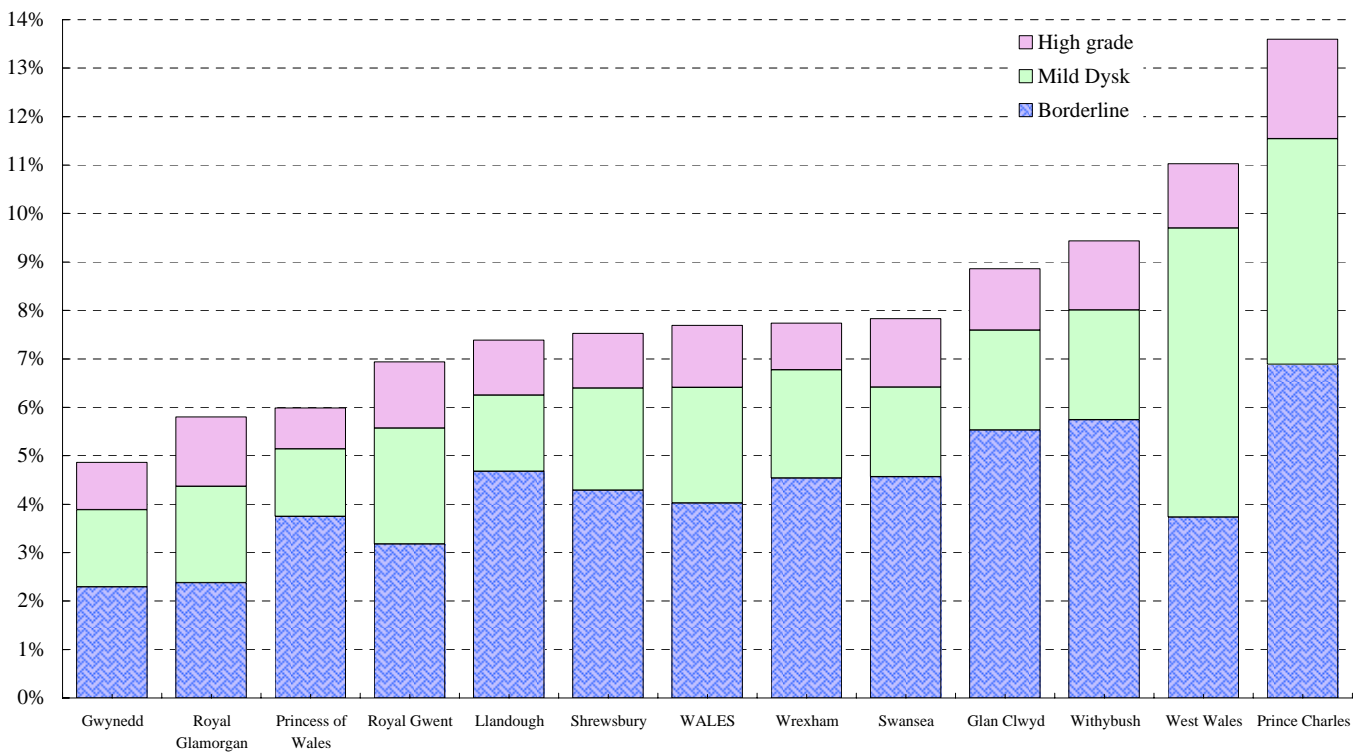


Figure 11b: Low grade² and high grade³ results as a percentage of adequate smears⁴, by laboratory



NOTES:

¹ Results of smears examined from GP and NHS community clinics only

² 'Low grade' results are 'borderline' or 'mild dyskaryosis' whilst 'High grade' results are 'moderate dyskaryosis' or worse

³ 'High grade' includes results reported as 'moderate dyskaryosis', 'severe dyskaryosis', 'severe dyskaryosis/?invasive carcinoma', or '?glandular neoplasia

Table 12a: Number of adequate smears examined by pathology laboratories¹, by result of test and age.

Source: KC61, part B

Results of tests	Total ²	Under 20	20-24	25-29	30-34	35-39	40-44	45-49	50-54	55-59	60-64	65+
Negative	175,848	394	18,600	16,953	21,855	24,335	23,053	19,559	18,698	17,926	12,948	1,527
Borderline changes	7,667	54	1,759	1,041	979	1,017	914	769	544	366	182	42
Mild dyskaryosis	4,543	47	1,483	738	654	545	374	272	210	143	67	10
Moderate dyskaryosis	1,385	10	393	319	243	167	118	46	40	27	13	9
Severe dyskaryosis	912	1	190	203	202	129	86	51	19	20	8	3
?Invasive carcinoma	45	-	4	3	15	8	4	3	3	3	1	1
?Glandular neoplasia	97	-	2	8	17	12	16	12	10	7	4	9
TOTAL	190,497	506	22,431	19,265	23,965	26,213	24,565	20,712	19,524	18,492	13,223	1,601

Table 12b: Percentage of adequate smears examined by pathology laboratories¹, by result of test and age.

Source: KC61, part B

Results of tests	Total ²	Under 20	20-24	25-29	30-34	35-39	40-44	45-49	50-54	55-59	60-64	65+
Negative	92.3%	77.9%	82.9%	88.0%	91.2%	92.8%	93.8%	94.4%	95.8%	96.9%	97.9%	95.4%
Borderline changes	4.0%	10.7%	7.8%	5.4%	4.1%	3.9%	3.7%	3.7%	2.8%	2.0%	1.4%	2.6%
Mild dyskaryosis	2.4%	9.3%	6.6%	3.8%	2.7%	2.1%	1.5%	1.3%	1.1%	0.8%	0.5%	0.6%
Moderate dyskaryosis	0.7%	2.0%	1.8%	1.7%	1.0%	0.6%	0.5%	0.2%	0.2%	0.1%	0.1%	0.6%
Severe dyskaryosis	0.5%	0.2%	0.8%	1.1%	0.8%	0.5%	0.4%	0.2%	0.1%	0.1%	0.1%	0.2%
?Invasive carcinoma	0.0%	0.0%	0.0%	0.0%	0.1%	0.0%	0.0%	0.0%	0.0%	0.0%	0.0%	0.1%
?Glandular neoplasia	0.1%	0.0%	0.0%	0.0%	0.1%	0.0%	0.1%	0.1%	0.1%	0.0%	0.0%	0.6%
TOTAL	100.0%	100.0%	100.0%	100.0%	100.0%	100.0%	100.0%	100.0%	100.0%	100.0%	100.0%	100.0%

Figure 12a: Abnormal smears, by age and result

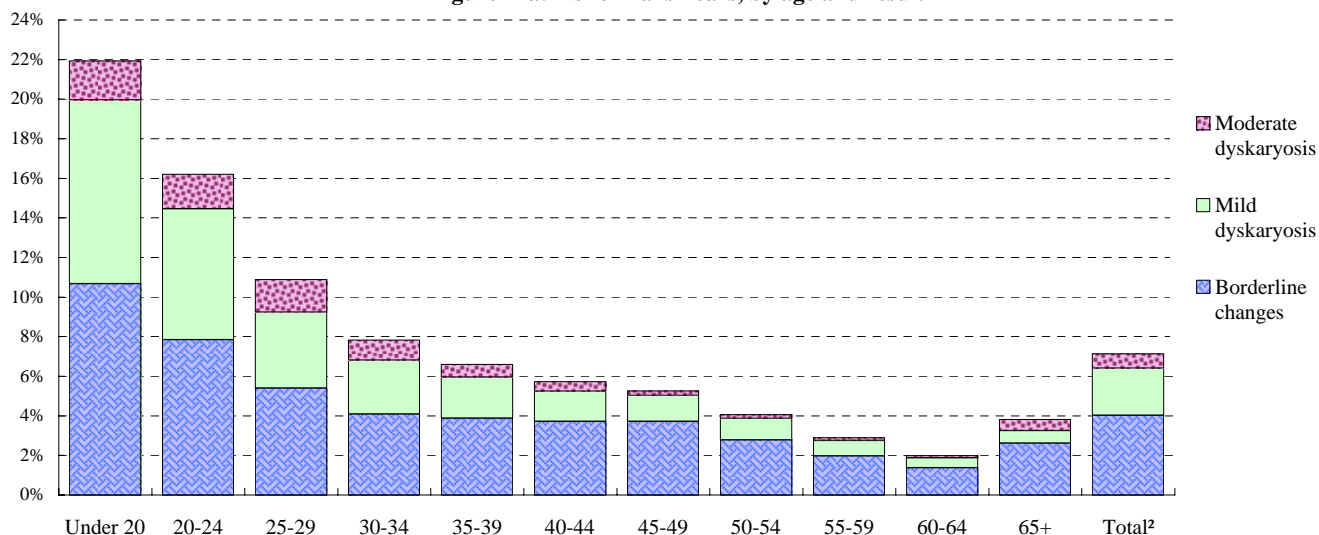
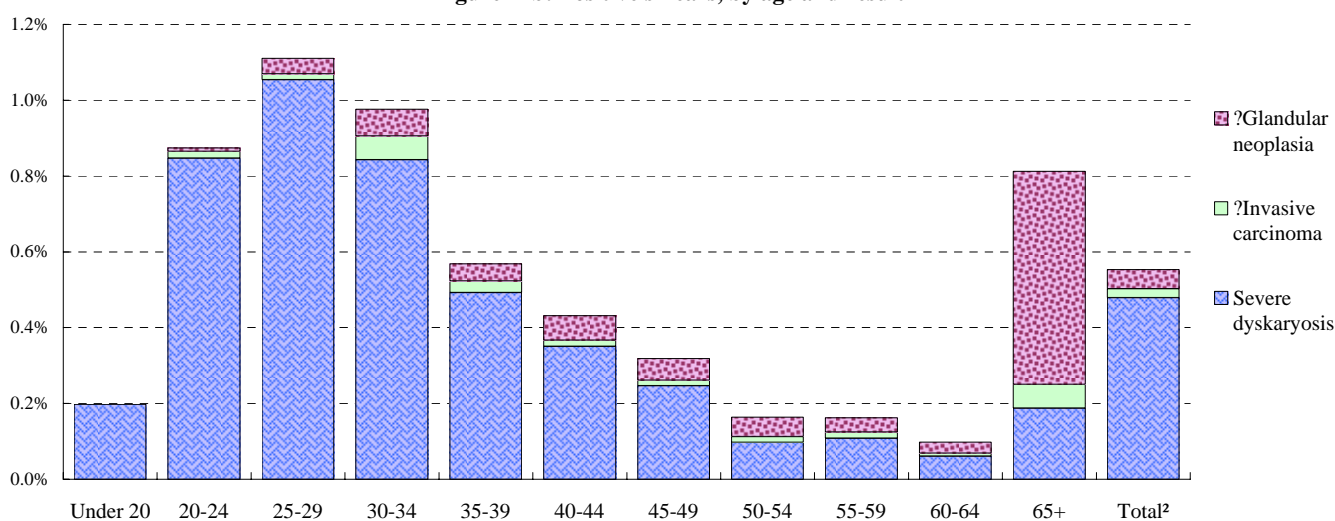


Figure 12b: Positive smears, by age and result



NOTES:

¹ Results of smears examined from GP and NHS community clinics only

² Age not knowns (2 negatives in Prince Charles, 3 negatives in Swansea, 1 negative in Princess of Wales, 1 negative in Royal Glamorgan and 5 negatives, 2 borderline in Glan Clwyd) not included in the total.

Table 13a: Number of inadequate smears, by age and laboratory¹

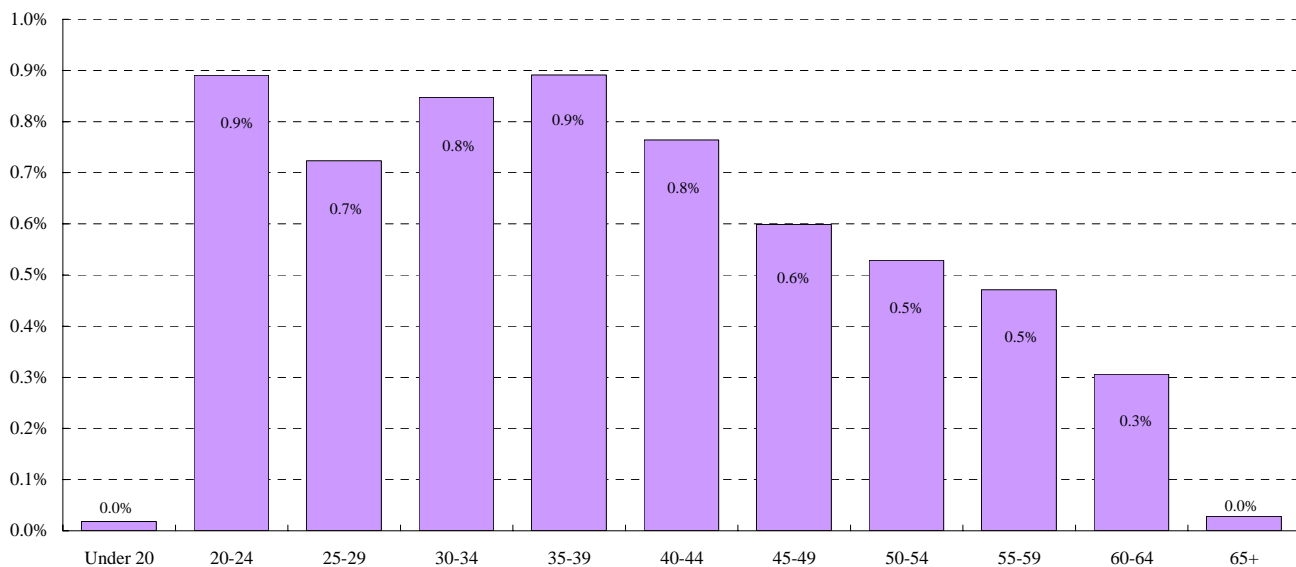
Source: KC61, part B

Laboratory	Total ³ inadequate smears											
	Under 20	20-24	25-29	30-34	35-39	40-44	45-49	50-54	55-59	60-64	65+	
Glan Clwyd	6	254	196	242	310	231	228	206	180	123	13	
Gwynedd	3	163	122	155	137	141	104	79	88	46	4	
Llandough	3	187	129	154	111	90	66	48	55	30	2	
Prince Charles	3	127	113	142	172	126	85	87	65	33	5	
Princess of Wales	1	94	119	140	106	125	73	83	98	65	2	
Royal Glamorgan	2	103	89	106	93	86	71	50	55	39	4	
Royal Gwent	1	37	27	39	23	32	25	32	34	34	2	
Swansea	9	382	306	294	356	298	205	197	151	109	13	
West Wales	4	265	181	196	232	219	187	143	106	78	5	
Withybush	-	79	76	80	83	57	48	39	36	21	1	
Wrexham	2	71	61	88	104	56	54	52	46	22	4	
Shrewsbury	3	44	48	83	80	89	68	57	42	21	2	
TOTAL	37	1,806	1,467	1,719	1,807	1,550	1,214	1,073	956	621	57	

Table 13b: Inadequate smears as a percentage³ of total smears, by age and laboratory

Laboratory	Total ³	Under 20	20-24	25-29	30-34	35-39	40-44	45-49	50-54	55-59	60-64	65+
Glan Clwyd	14.4%	0.0%	1.8%	1.4%	1.7%	2.2%	1.7%	1.6%	1.5%	1.3%	0.9%	0.1%
Gwynedd	7.1%	0.0%	1.1%	0.8%	1.1%	0.9%	1.0%	0.7%	0.5%	0.6%	0.3%	0.0%
Llandough	2.8%	0.0%	0.6%	0.4%	0.5%	0.4%	0.3%	0.2%	0.2%	0.2%	0.1%	0.0%
Prince Charles	12.1%	0.0%	1.6%	1.4%	1.8%	2.2%	1.6%	1.1%	1.1%	0.8%	0.4%	0.1%
Princess of Wales	9.1%	0.0%	0.9%	1.2%	1.4%	1.1%	1.3%	0.7%	0.8%	1.0%	0.7%	0.0%
Royal Glamorgan	3.6%	0.0%	0.5%	0.5%	0.6%	0.5%	0.4%	0.4%	0.3%	0.3%	0.2%	0.0%
Royal Gwent	0.8%	0.0%	0.1%	0.1%	0.1%	0.1%	0.1%	0.1%	0.1%	0.1%	0.1%	0.0%
Swansea	7.9%	0.0%	1.3%	1.0%	1.0%	1.2%	1.0%	0.7%	0.7%	0.5%	0.4%	0.0%
West Wales	9.1%	0.0%	1.5%	1.0%	1.1%	1.3%	1.2%	1.1%	0.8%	0.6%	0.4%	0.0%
Withybush	6.8%	0.0%	1.0%	1.0%	1.0%	1.1%	0.7%	0.6%	0.5%	0.5%	0.3%	0.0%
Wrexham	4.8%	0.0%	0.6%	0.5%	0.7%	0.9%	0.5%	0.5%	0.4%	0.4%	0.2%	0.0%
Shrewsbury	12.7%	0.1%	1.0%	1.1%	2.0%	1.9%	2.1%	1.6%	1.3%	1.0%	0.5%	0.0%
TOTAL³	6.1%	0.0%	0.9%	0.7%	0.8%	0.9%	0.8%	0.6%	0.5%	0.5%	0.3%	0.0%

Figure 13 : Inadequate smears as a percentage³ of total smears, by age



NOTES:

¹ Results of smears examined from GP and NHS community clinics only

² There are 4 'Age not knowns' (2 Glan Clwyd, 1 Swansea and 1 West Wales) not included in the number of total smears used to calculate the percentages for the laboratories concerned and TOTAL.

³ Percentage of known ages

Women referred following smear results: inadequate/borderline/mild dyskaryosis (ie HMR 101/5, category 1/8/3 results)

Number of women

Laboratory	Total	Adeno-carcinoma					HPV only	No CIN/No HPV	Inadequate biopsy	Colposcopy		Result not known
		Cancer	in-situ	CIN 3	CIN 2	CIN 1				NAD - no biopsy taken	Result known	
Glan Clwyd	381	2	3	24	21	82	40	156	1	45	7	
Gwynedd	168	-	-	27	18	40	4	31	-	43	5	
Llandough	405	1	3	49	40	41	101	110	6	43	11	
Prince Charles	364	1	2	17	20	82	84	92	24	32	10	
Princess of Wales	139	1	-	20	18	13	15	24	1	22	25	
Royal Glamorgan	314	-	-	18	29	57	39	55	5	71	40	
Royal Gwent	679	-	1	39	76	196	61	58	13	168	67	
Swansea	690	2	3	56	64	133	58	203	10	67	94	
West Wales	502	1	4	16	36	118	70	83	16	152	6	
Withybush	209	-	3	12	26	98	13	28	6	23	-	
Wrexham	386	-	1	28	44	97	7	94	6	102	7	
Shrewsbury	56	-	-	-	2	2	13	16	1	11	11	
TOTAL	4,293	8	20	306	394	959	505	950	89	779	283	

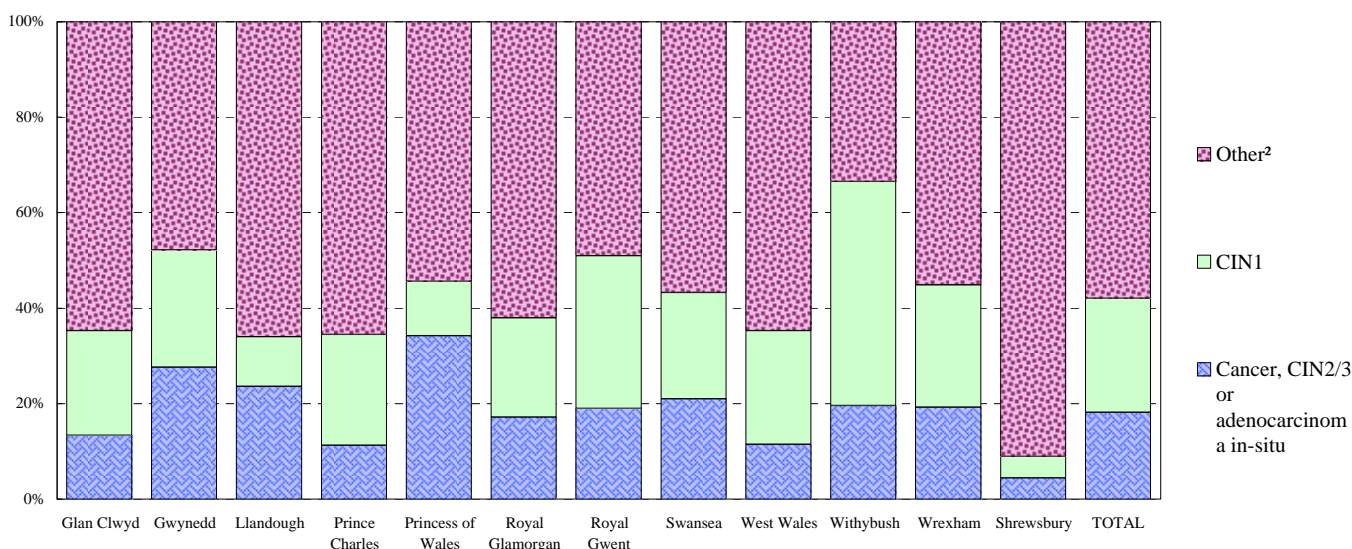
Table 14b: Outcome for women recommended for gynaecological referral during April 2002 - March 2003

Women referred following smear results: inadequate/borderline/mild dyskaryosis (ie HMR 101/5, category 1/8/3 results)

Percentage of cases with known result

Laboratory	Total with known result	Adeno-carcinoma					HPV only	No CIN/No HPV	Inadequate biopsy	Colposcopy		Result not known ¹
		Cancer	in-situ	CIN 3	CIN 2	CIN 1				NAD - no biopsy taken	Result known ¹	
Glan Clwyd	100%	0.5%	0.8%	6.4%	5.6%	21.9%	10.7%	41.7%	0.3%	12.0%	1.8%	
Gwynedd	100%	0.0%	0.0%	16.6%	11.0%	24.5%	2.5%	19.0%	0.0%	26.4%	3.0%	
Llandough	100%	0.3%	0.8%	12.4%	10.2%	10.4%	25.6%	27.9%	1.5%	10.9%	2.7%	
Prince Charles	100%	0.3%	0.6%	4.8%	5.6%	23.2%	23.7%	26.0%	6.8%	9.0%	2.7%	
Princess of Wales	100%	0.9%	0.0%	17.5%	15.8%	11.4%	13.2%	21.1%	0.9%	19.3%	18.0%	
Royal Glamorgan	100%	0.0%	0.0%	6.6%	10.6%	20.8%	14.2%	20.1%	1.8%	25.9%	12.7%	
Royal Gwent	100%	0.0%	0.2%	6.4%	12.4%	32.0%	10.0%	9.5%	2.1%	27.5%	9.9%	
Swansea	100%	0.3%	0.5%	9.4%	10.7%	22.3%	9.7%	34.1%	1.7%	11.2%	13.6%	
West Wales	100%	0.2%	0.8%	3.2%	7.3%	23.8%	14.1%	16.7%	3.2%	30.6%	1.2%	
Withybush	100%	0.0%	1.4%	5.7%	12.4%	46.9%	6.2%	13.4%	2.9%	11.0%	0.0%	
Wrexham	100%	0.0%	0.3%	7.4%	11.6%	25.6%	1.8%	24.8%	1.6%	26.9%	1.8%	
Shrewsbury	100%	0.0%	0.0%	0.0%	4.4%	4.4%	28.9%	35.6%	2.2%	24.4%	19.6%	
TOTAL	100%	0.2%	0.5%	7.6%	9.8%	23.9%	12.6%	23.7%	2.2%	19.4%	6.6%	

Figure 14a: Outcome of referral - following smear results of inadequate, borderline or mild dyskaryosis



¹ as percentage of total results (ie 'known' and 'not known')

² Other = 'HPV only', 'No CIN/No HPV', 'Inadequate biopsy', and 'Colposcopy NAD - no biopsy taken'

Table 14c: Outcome for women recommended for gynaecological referral during April 2002 - March 2003

Source: KC61, part C

Women referred following smear results: moderate dyskaryosis or worse, (ie HMR 101/5, category 7/4/5/6 results)

Number of women

Laboratory	Total	Cancer	Adeno-carcinoma				HPV only	No CIN/ No HPV	Inadequate biopsy	Colposcopy		Result not known
			in-situ	CIN 3	CIN 2	CIN 1				NAD - no biopsy taken	Result not known	
Glan Clwyd	189	6	2	80	43	25	1	22	-	6	4	
Gwynedd	191	5	2	107	39	16	3	10	-	5	4	
Llandough	380	4	15	203	62	21	27	34	2	8	4	
Prince Charles	163	2	3	59	37	25	18	9	1	8	1	
Princess of Wales	95	2	3	61	9	6	6	7	-	1	-	
Royal Glamorgan	422	2	5	129	87	54	23	40	7	24	51	
Royal Gwent	515	6	3	250	106	46	8	8	6	39	43	
Swansea	511	14	8	242	91	63	24	51	2	9	7	
West Wales	176	1	2	66	46	21	13	17	3	7	-	
Withybush	103	4	1	37	39	16	-	5	-	1	-	
Wrexham	99	5	3	41	28	12	-	6	1	2	1	
Shrewsbury	42	2	-	17	10	4	2	2	-	1	4	
TOTAL	2,886	53	47	1,292	597	309	125	211	22	111	119	

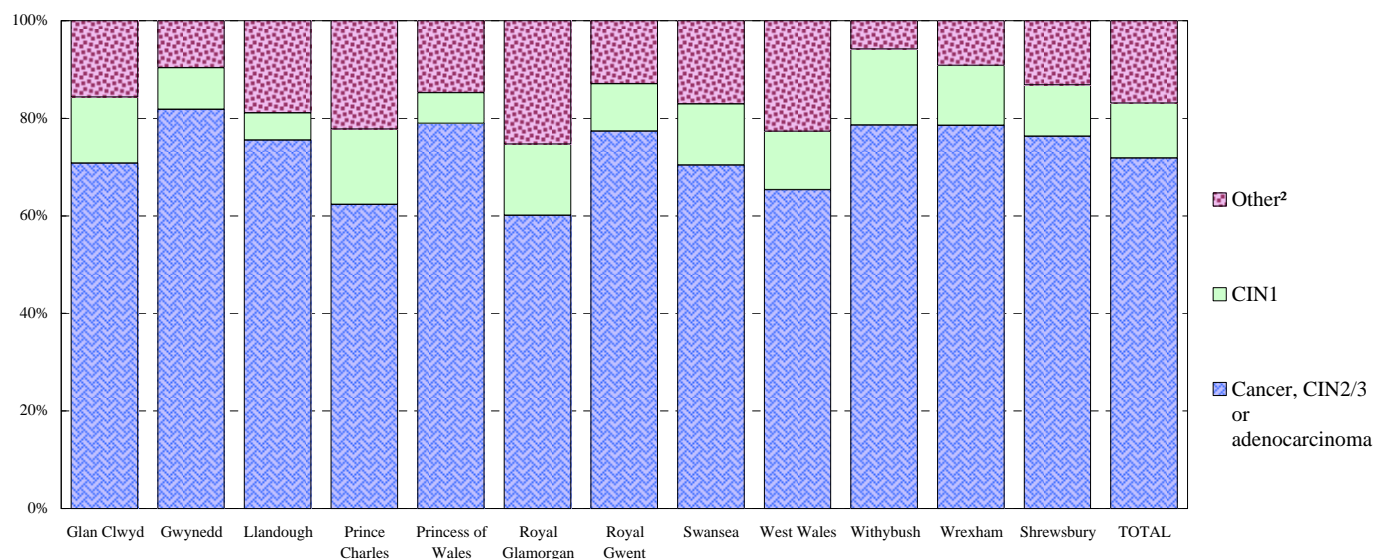
Table 14d: Outcome for women recommended for gynaecological referral during April 2002 - March 2003

Women referred following smear results: moderate dyskaryosis or worse, (ie HMR 101/5, category 7/4/5/6 results)

Percentage of cases with known result

Laboratory	Total with known result	Cancer	Adeno-carcinoma				HPV only	No CIN/ No HPV	Inadequate biopsy	Colposcopy		Result not known ¹
			in-situ	CIN 3	CIN 2	CIN 1				NAD - no biopsy taken	Result not known ¹	
Glan Clwyd	100%	3.2%	1.1%	43.2%	23.2%	13.5%	0.5%	11.9%	0.0%	3.2%	2.1%	
Gwynedd	100%	2.7%	1.1%	57.2%	20.9%	8.6%	1.6%	5.3%	0.0%	2.7%	2.1%	
Llandough	100%	1.1%	4.0%	54.0%	16.5%	5.6%	7.2%	9.0%	0.5%	2.1%	1.1%	
Prince Charles	100%	1.2%	1.9%	36.4%	22.8%	15.4%	11.1%	5.6%	0.6%	4.9%	0.6%	
Princess of Wales	100%	2.1%	3.2%	64.2%	9.5%	6.3%	6.3%	7.4%	0.0%	1.1%	0.0%	
Royal Glamorgan	100%	0.5%	1.3%	34.8%	23.5%	14.6%	6.2%	10.8%	1.9%	6.5%	12.1%	
Royal Gwent	100%	1.3%	0.6%	53.0%	22.5%	9.7%	1.7%	1.7%	1.3%	8.3%	8.3%	
Swansea	100%	2.8%	1.6%	48.0%	18.1%	12.5%	4.8%	10.1%	0.4%	1.8%	1.4%	
West Wales	100%	0.6%	1.1%	37.5%	26.1%	11.9%	7.4%	9.7%	1.7%	4.0%	0.0%	
Withybush	100%	3.9%	1.0%	35.9%	37.9%	15.5%	0.0%	4.9%	0.0%	1.0%	0.0%	
Wrexham	100%	5.1%	3.1%	41.8%	28.6%	12.2%	0.0%	6.1%	1.0%	2.0%	1.0%	
Shrewsbury	100%	5.3%	0.0%	44.7%	26.3%	10.5%	5.3%	5.3%	0.0%	2.6%	9.5%	
TOTAL	100%	1.9%	1.7%	46.7%	21.6%	11.2%	4.5%	7.6%	0.8%	4.0%	4.1%	

Figure 14b: Outcome of referral - following smear results of moderate dyskaryosis or worse



NOTES:

¹ as percentage of total results (ie 'known' and 'not known')

² Other = 'HPV only', 'No CIN/No HPV', 'Inadequate biopsy', and 'Colposcopy NAD - no biopsy taken'

Figure 14c: Results of tests on women recommended for gynaecological referral

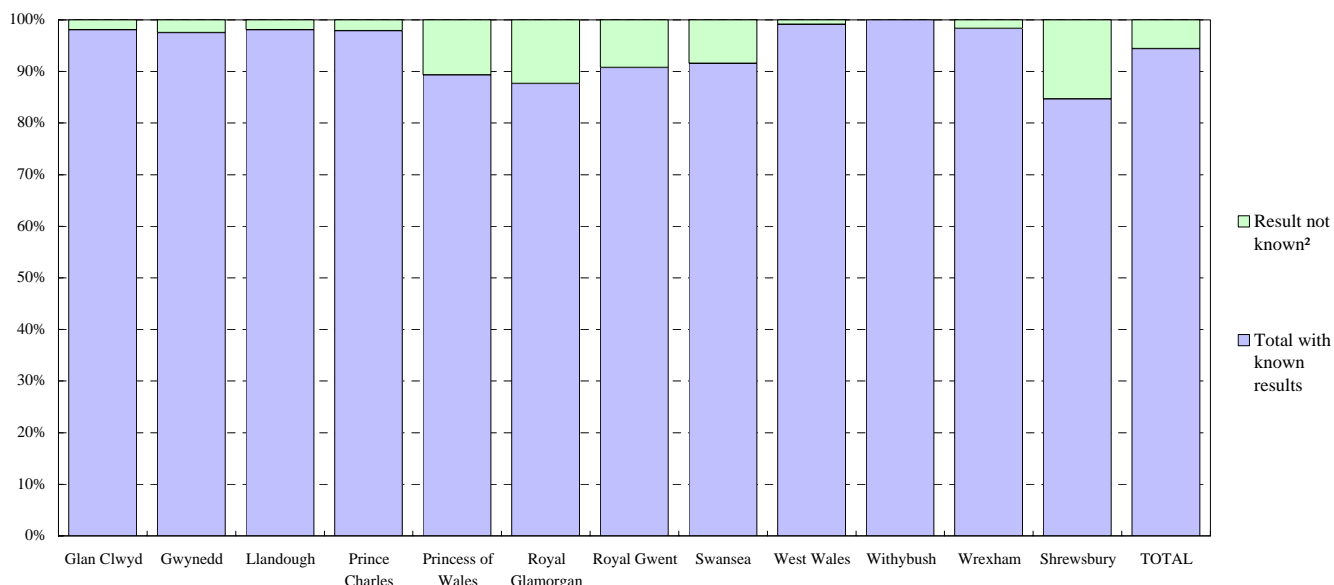


Table 15: Positive Predictive Value (PPV)¹ for high grade³ referral smears, by laboratory

Source: KC61, part D

Laboratory	Number of x ¹	Number of y ¹	PPV ¹
Glan Clwyd	131	48	73%
Gwynedd	153	29	84%
Llandough	284	82	78%
Prince Charles	101	52	66%
Princess of Wales	75	19	80%
Royal Glamorgan	223	117	66%
Royal Gwent	365	62	85%
Swansea	355	138	72%
West Wales	115	51	69%
Withybush	81	21	79%
Wrexham	77	18	81%
Shrewsbury	29	8	78%
TOTAL	1,989	645	76%

NOTES:

¹ PPV is calculated where the most significant result was moderate dyskaryosis or worse (categories 7/4/5/6) resulting in recommendation for gynaecological referral.

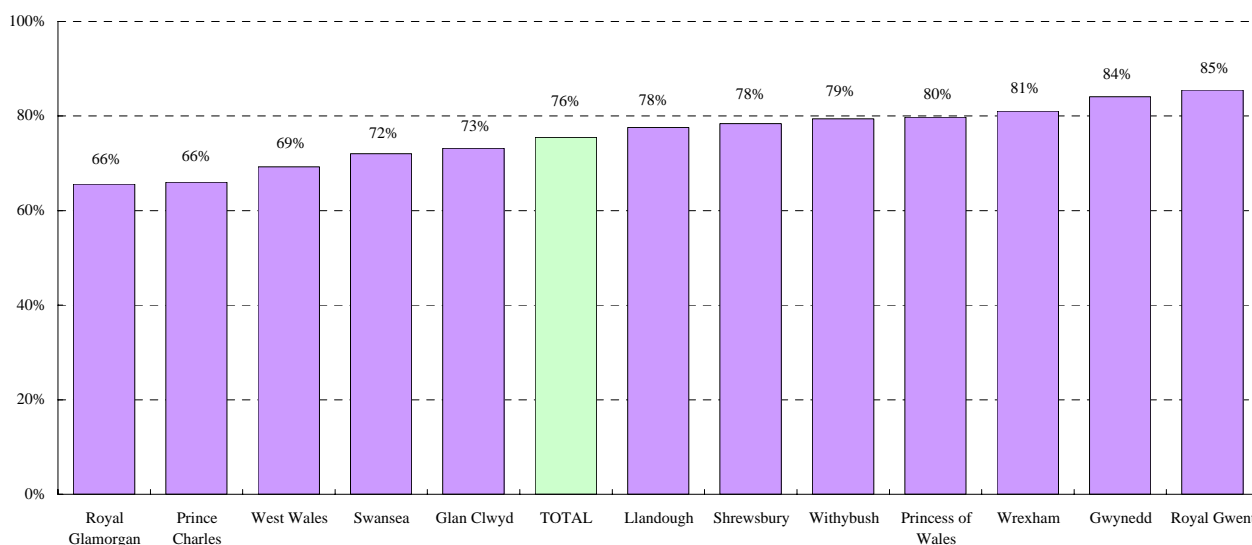
x = outcome of referral equal to 'cancer', 'adenocarcinoma in-situ', 'CIN3' or 'CIN2'.

y = outcome of referral equal to 'CIN1', 'HPV only' or 'No CIN/No HPV'.

% is calculated as Total x/(Total x + Total y) * 100

See the 'Introduction' for further information.

Figure 15: Positive Predictive Value (PPV)¹ for high grade³ referral smears, by laboratory



NOTES:

² Reasons for 'results not known' include women whose outcomes cannot be traced, women who have declined to attend for further investigations, women whose results are not yet available or women whose biopsies have not yet been carried out (for example due to pregnancy).

³ 'High grade' includes results reported as 'moderate dyskaryosis', 'severe dyskaryosis', 'severe dyskaryosis/?invasive carcinoma', or '?glandular neoplasia

Table 16a: Number of new patients seen, by referral smear result and colposcopy clinic

Source: KC65

Colposcopy Clinic	Inadequate	Negative	Borderline changes	Mild dysk	Moderate dysk	Severe dysk	Severe dysk /?Invasive carcinoma	?Glandular neoplasia	No referral smear	Total
Brecon	-	1	17	12	13	7	1	-	1	52
Bronglais	10	-	38	105	30	17	-	2	24	226
Caerphilly	5	2	33	62	69	37	-	1	27	236
Cardiff and Vale	10	10	258	236	165	176	17	16	218	1,106
Glan Clwyd	79	1	185	136	101	62	-	10	119	693
Gwynedd	30	-	46	67	72	51	1	2	151	420
Llandrindod Wells	6	-	8	10	4	4	-	-	-	32
Neath	37	-	162	114	101	59	5	6	42	526
Nevill Hall	3	3	88	134	69	68	-	3	84	452
Prince Charles	37	9	116	141	109	59	1	2	121	595
Prince Philip	15	1	35	95	45	13	-	5	18	227
Princess of Wales	30	-	69	66	55	23	2	7	20	272
Royal Glamorgan	9	1	65	94	101	58	1	4	-	333
Royal Gwent	6	3	190	279	195	138	5	4	70	890
Singleton	30	1	201	176	160	79	4	7	131	789
West Wales	26	-	85	229	82	26	2	6	39	495
Withybush	7	4	99	127	106	34	1	3	107	488
Wrexham	25	3	149	156	66	46	3	7	110	565
WALES	365	39	1,844	2,239	1,543	957	43	85	1,282	8,397

Table 16b: Percentage of new patients seen, by referral smear result and colposcopy clinic

Colposcopy Clinic	Inadequate	Negative	Borderline changes	Mild dysk	Moderate dysk	Severe dysk	Severe dysk /?Invasive carcinoma	?Glandular neoplasia	No referral smear	Total
Brecon	-	1.9	32.7	23.1	25.0	13.5	1.9	-	1.9	100.0
Bronglais	4.4	-	16.8	46.5	13.3	7.5	-	0.9	10.6	100.0
Caerphilly	2.1	0.8	14.0	26.3	29.2	15.7	-	0.4	11.4	100.0
Cardiff and Vale	0.9	0.9	23.3	21.3	14.9	15.9	1.5	1.4	19.7	100.0
Glan Clwyd	11.4	0.1	26.7	19.6	14.6	8.9	-	1.4	17.2	100.0
Gwynedd	7.1	-	11.0	16.0	17.1	12.1	0.2	0.5	36.0	100.0
Llandrindod Wells	18.8	-	25.0	31.3	12.5	12.5	-	-	-	100.0
Neath	7.0	-	30.8	21.7	19.2	11.2	1.0	1.1	8.0	100.0
Nevill Hall	0.7	0.7	19.5	29.6	15.3	15.0	-	0.7	18.6	100.0
Prince Charles	6.2	1.5	19.5	23.7	18.3	9.9	0.2	0.3	20.3	100.0
Prince Philip	6.6	0.4	15.4	41.9	19.8	5.7	-	2.2	7.9	100.0
Princess of Wales	11.0	-	25.4	24.3	20.2	8.5	0.7	2.6	7.4	100.0
Royal Glamorgan	2.7	0.3	19.5	28.2	30.3	17.4	0.3	1.2	-	100.0
Royal Gwent	0.7	0.3	21.3	31.3	21.9	15.5	0.6	0.4	7.9	100.0
Singleton	3.8	0.1	25.5	22.3	20.3	10.0	0.5	0.9	16.6	100.0
West Wales	5.3	-	17.2	46.3	16.6	5.3	0.4	1.2	7.9	100.0
Withybush	1.4	0.8	20.3	26.0	21.7	7.0	0.2	0.6	21.9	100.0
Wrexham	4.4	0.5	26.4	27.6	11.7	8.1	0.5	1.2	19.5	100.0
WALES	4.3	0.5	22.0	26.7	18.4	11.4	0.5	1.0	15.3	100.0

Figure 16: Percentage of new patients seen, by referral smear result and colposcopy clinic

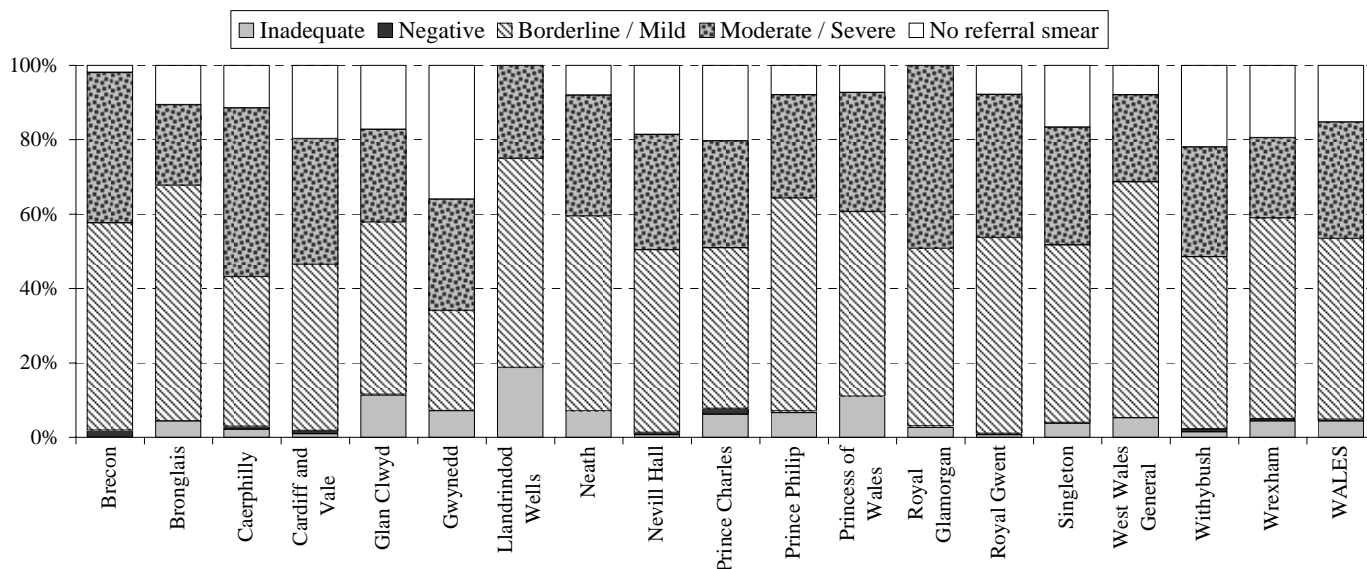


Table 17: Time from receipt of referral to first offered appointment, by colposcopy clinic (excluding patient instigated delays)

Source: KC65

Colposcopy Clinic	All smears			Moderate dyskaryosis or worse		
	< 8 weeks	> 8 weeks	Total	< 4 weeks	> 4 weeks	Total
Brecon	50	1	51	19	2	21
Bronglais	204	28	232	39	12	51
Caerphilly	169	78	247	65	44	109
Cardiff and Vale	1,134	22	1,156	354	27	381
Glan Clwyd	433	273	706	103	69	172
Gwynedd	369	63	432	88	43	131
Llandrindod Wells	27	6	33	4	4	8
Neath	182	341	523	69	99	168
Nevill Hall	330	144	474	104	41	145
Prince Charles	612	4	616	163	9	172
Prince Philip	181	55	236	48	18	66
Princess of Wales	249	27	276	77	13	90
Royal Glamorgan	298	44	342	95	73	168
Royal Gwent	556	372	928	300	62	362
Singleton	171	668	839	56	210	266
West Wales	402	97	499	97	16	113
Withybush	175	340	515	54	100	154
Wrexham	460	136	596	90	41	131
WALES	6,002	2,699	8,701	1,825	883	2,708
PERCENTAGE	69.0	31.0		67.4	32.6	

Figure 17a: Percentage of all new referrals offered an appointment within 8 weeks, by colposcopy clinic (excluding patient instigated delays)

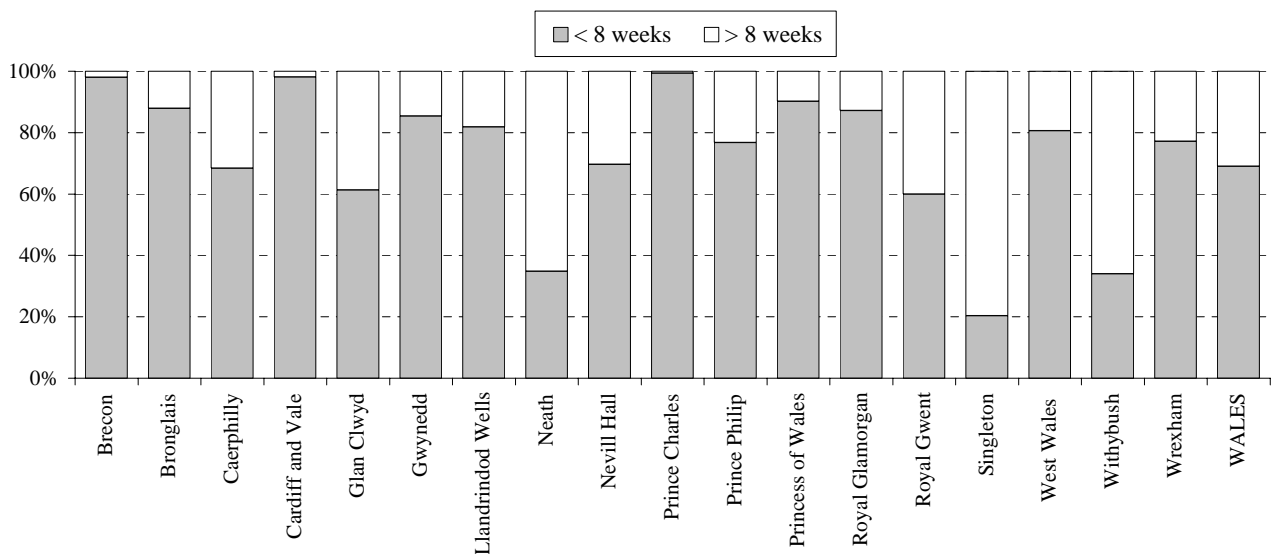


Figure 17b: Percentage of new referrals with moderate dyskaryosis or worse smears offered an appointment within 4 weeks, by colposcopy clinic (excluding patient instigated delays)

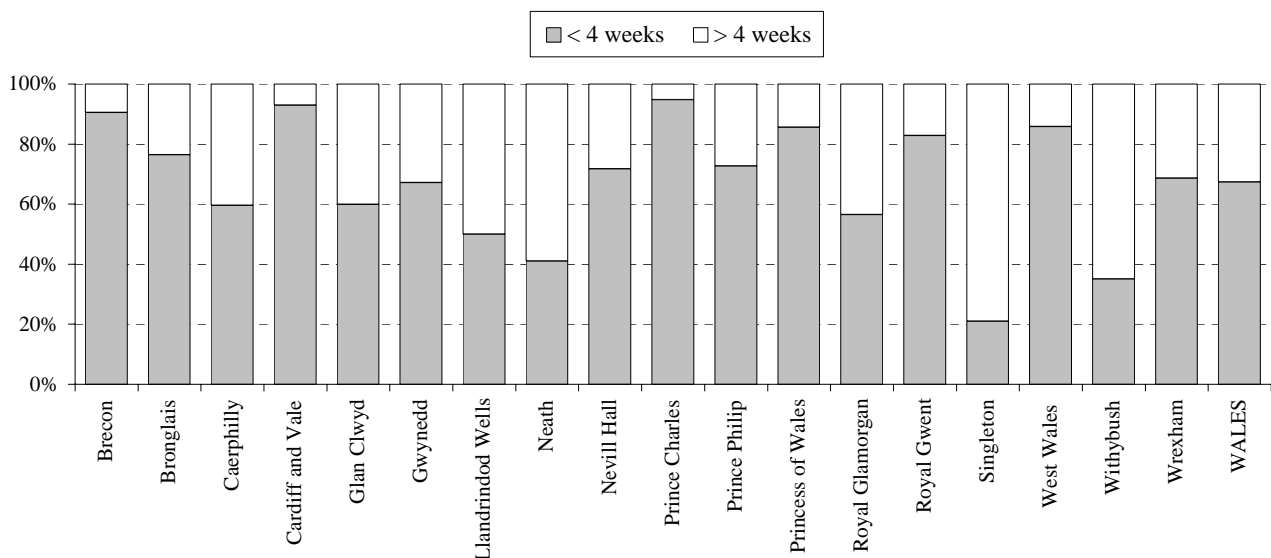


Table 18a: Total attended visits, by type of visit and colposcopy clinic

Source: KC65

Colposcopy Clinic	Colposcopic assessment	Select and treat	Planned treatment	Post treatment colp FU	Non treatment colp FU	Smear only - no colp	Consultation - no clinical activity	Not specified	Total
Brecon	58	19	18	23	-	20	47	1	186
Bronglais	170	43	20	48	96	104	1	125	607
Caerphilly	175	38	79	83	55	1	17	332	780
Cardiff and Vale	1,422	10	463	330	221	426	777	70	3,719
Glan Clwyd	575	29	229	404	307	115	14	989	2,662
Gwynedd	320	133	153	95	57	292	47	7	1,104
Llandrindod Wells	24	6	4	2	3	18	1	17	75
Neath	533	18	300	319	146	199	36	44	1,595
Nevill Hall	355	202	39	70	6	145	14	207	1,038
Prince Charles	529	37	465	506	136	122	118	94	2,007
Prince Philip	175	26	68	50	59	294	169	17	858
Princess of Wales	222	46	70	129	131	64	8	43	713
Royal Glamorgan	205	7	139	171	115	13	55	401	1,106
Royal Gwent	758	230	344	503	483	123	95	144	2,680
Singleton	779	53	234	206	519	54	33	95	1,973
West Wales	437	28	173	171	191	330	122	100	1,552
Withybush	92	21	22	11	3	20	2	560	731
Wrexham	598	42	168	30	56	729	37	219	1,879
WALES	7,427	988	2,988	3,151	2,584	3,069	1,593	3,465	25,265

Table 18b: Percentage of attended visits, by type of visit and colposcopy clinic

Colposcopy Clinic	Colposcopic assessment	Select and treat	Planned treatment	Post treatment colp FU	Non treatment colp FU	Smear only - no colp	Consultation - no clinical activity	Not specified	Total
Brecon	31.2	10.2	9.7	12.4	-	10.8	25.3	0.5	100.0
Bronglais	28.0	7.1	3.3	7.9	15.8	17.1	0.2	20.6	100.0
Caerphilly	22.4	4.9	10.1	10.6	7.1	0.1	2.2	42.6	100.0
Cardiff and Vale	38.2	0.3	12.4	8.9	5.9	11.5	20.9	1.9	100.0
Glan Clwyd	21.6	1.1	8.6	15.2	11.5	4.3	0.5	37.2	100.0
Gwynedd	29.0	12.0	13.9	8.6	5.2	26.4	4.3	0.6	100.0
Llandrindod Wells	32.0	8.0	5.3	2.7	4.0	24.0	1.3	22.7	100.0
Neath	33.4	1.1	18.8	20.0	9.2	12.5	2.3	2.8	100.0
Nevill Hall	34.2	19.5	3.8	6.7	0.6	14.0	1.3	19.9	100.0
Prince Charles	26.4	1.8	23.2	25.2	6.8	6.1	5.9	4.7	100.0
Prince Philip	20.4	3.0	7.9	5.8	6.9	34.3	19.7	2.0	100.0
Princess of Wales	31.1	6.5	9.8	18.1	18.4	9.0	1.1	6.0	100.0
Royal Glamorgan	18.5	0.6	12.6	15.5	10.4	1.2	5.0	36.3	100.0
Royal Gwent	28.3	8.6	12.8	18.8	18.0	4.6	3.5	5.4	100.0
Singleton	39.5	2.7	11.9	10.4	26.3	2.7	1.7	4.8	100.0
West Wales	28.2	1.8	11.1	11.0	12.3	21.3	7.9	6.4	100.0
Withybush	12.6	2.9	3.0	1.5	0.4	2.7	0.3	76.6	100.0
Wrexham	31.8	2.2	8.9	1.6	3.0	38.8	2.0	11.7	100.0
WALES	29.4	3.9	11.8	12.5	10.2	12.1	6.3	13.7	100.0

Figure 18: Percentage of attended visits, by type of visit and colposcopy clinic

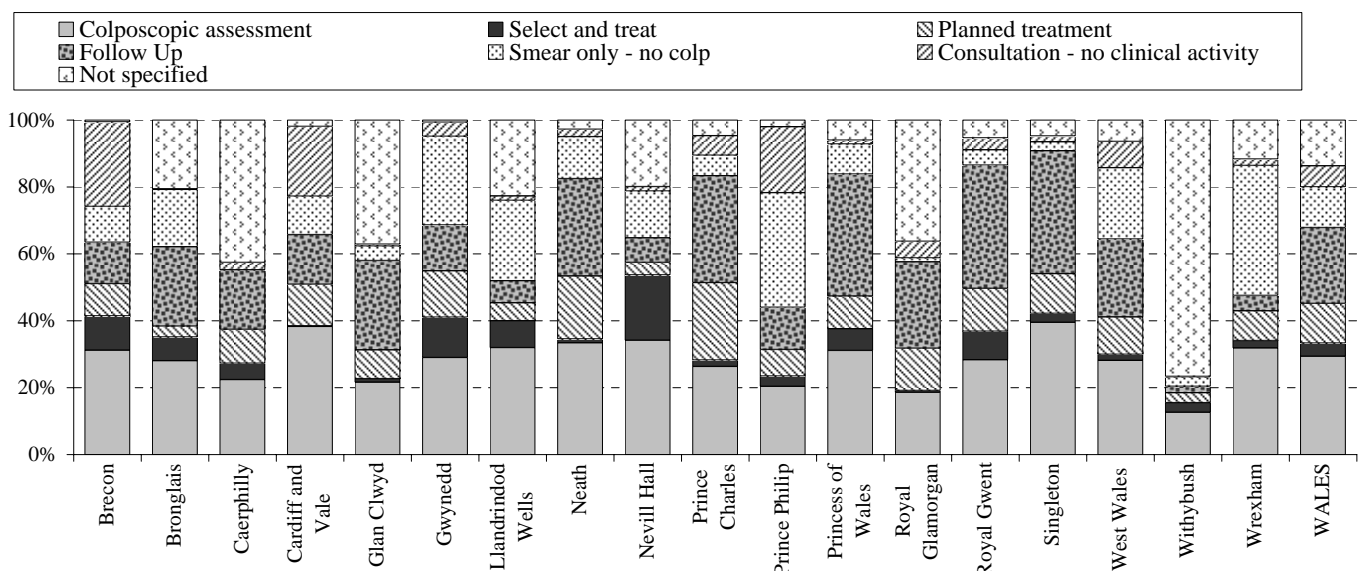


Table 19a: Number of new patients seen, by result of referral smear and most significant procedure at first visit

Source: KC65

Result of referral smear	Ablation no biopsy	Ablation & biopsy	Excision	Diagnostic biopsy	Other	No treatment	Total
Inadequate	3	1	-	152	6	203	365
Negative	4	-	1	10	1	23	39
Borderline changes	6	13	59	1,137	28	601	1,844
Mild dyskaryosis	11	29	123	1,479	16	581	2,239
Moderate dyskaryosis	5	2	292	999	8	237	1,543
Severe dyskaryosis	-	3	274	517	7	156	957
Severe dyskaryosis /?invasive carcinoma	-	-	11	26	-	6	43
Severe dyskaryosis /?glandular neoplasia	-	-	14	50	1	20	85
No referral smear	60	12	43	366	42	759	1,282
Total	89	60	817	4,736	109	2,586	8,397

Table 19b: Percentage of new patients seen, by result of referral smear and most significant procedure at first visit

Result of referral smear	Ablation no biopsy	Ablation & biopsy	Excision	Diagnostic biopsy	Other	No treatment	Total
Inadequate	0.8	0.3	-	41.6	1.6	55.6	100.0
Negative	10.3	-	2.6	25.6	2.6	59.0	100.0
Borderline changes	0.3	0.7	3.2	61.7	1.5	32.6	100.0
Mild dyskaryosis	0.5	1.3	5.5	66.1	0.7	25.9	100.0
Moderate dyskaryosis	0.3	0.1	18.9	64.7	0.5	15.4	100.0
Severe dyskaryosis	-	0.3	28.6	54.0	0.7	16.3	100.0
Severe dyskaryosis /?invasive carcinoma	-	-	25.6	60.5	-	14.0	100.0
Severe dyskaryosis /?glandular neoplasia	-	-	16.5	58.8	1.2	23.5	100.0
No referral smear	4.7	0.9	3.4	28.5	3.3	59.2	100.0
Total	1.1	0.7	9.7	56.4	1.3	30.8	100.0

Figure 19: Percentage of new patients seen, by result of referral smear and most significant procedure at first visit

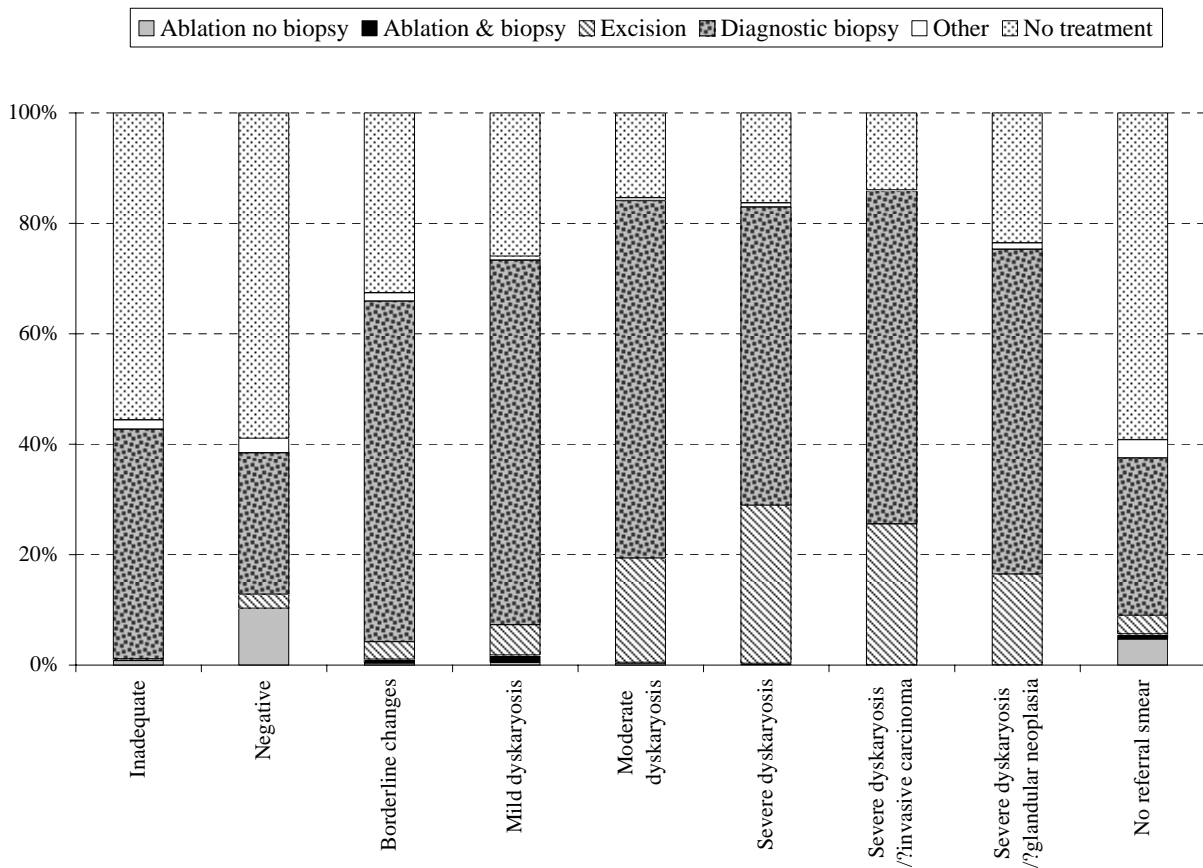


Table 20a: Number of new patients seen, by most significant procedure at first visit and colposcopy clinic

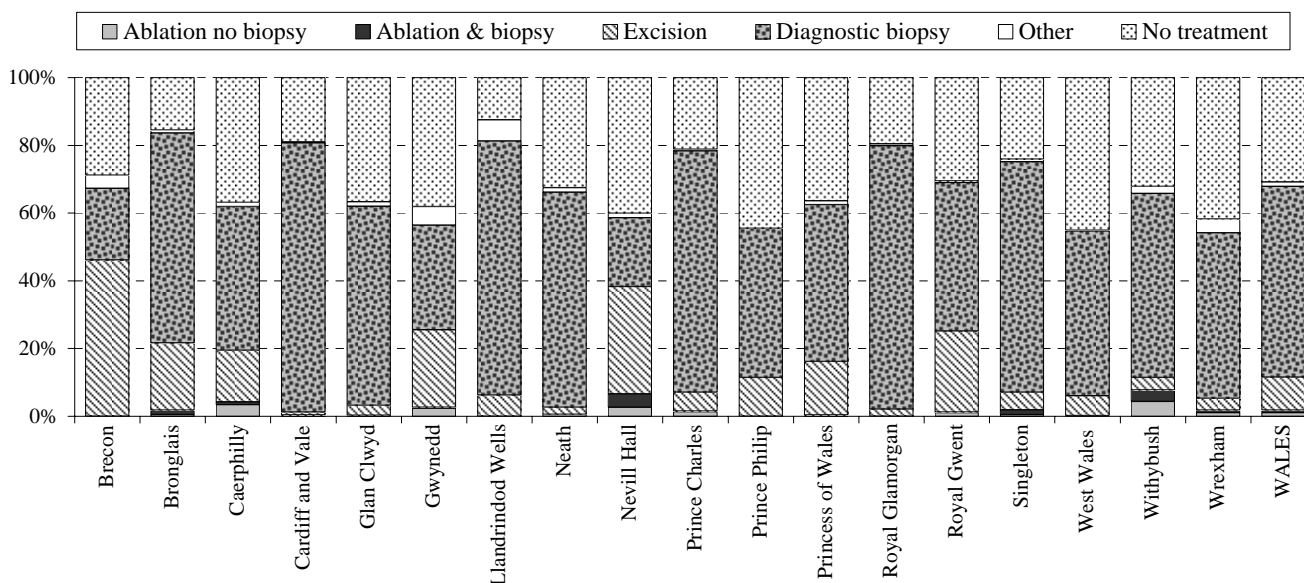
Source: KC65

Colposcopy Clinic	Ablation no biopsy	Ablation & biopsy	Excision	Diagnostic biopsy	Other	No treatment	Total
Brecon	-	-	24	11	2	15	52
Bronglais	1	3	45	140	2	35	226
Caerphilly	8	2	36	100	3	87	236
Cardiff and Vale	4	-	10	879	3	210	1,106
Glan Clwyd	2	-	20	408	9	254	693
Gwynedd	10	1	96	130	23	160	420
Llandrindod Wells	-	-	2	24	2	4	32
Neath	3	-	11	334	7	171	526
Nevill Hall	12	18	143	92	6	181	452
Prince Charles	8	1	33	424	3	126	595
Prince Philip	-	-	26	100	-	101	227
Princess of Wales	1	-	43	126	3	99	272
Royal Glamorgan	-	-	7	259	2	65	333
Royal Gwent	9	2	213	390	4	272	890
Singleton	4	11	41	537	6	190	789
West Wales	-	1	29	241	1	223	495
Withybush	21	17	18	265	10	157	488
Wrexham	6	4	20	276	23	236	565
WALES	89	60	817	4,736	109	2,586	8,397

Table 20b: Percentage of new patients seen, by most significant procedure at first visit and colposcopy clinic

Colposcopy Clinic	Ablation no biopsy	Ablation & biopsy	Excision	Diagnostic biopsy	Other	No treatment	Total
Brecon	-	-	46.2	21.2	3.8	28.8	100.0
Bronglais	0.4	1.3	19.9	61.9	0.9	15.5	100.0
Caerphilly	3.4	0.8	15.3	42.4	1.3	36.9	100.0
Cardiff and Vale	0.4	-	0.9	79.5	0.3	19.0	100.0
Glan Clwyd	0.3	-	2.9	58.9	1.3	36.7	100.0
Gwynedd	2.4	0.2	22.9	31.0	5.5	38.1	100.0
Llandrindod Wells	-	-	6.3	75.0	6.3	12.5	100.0
Neath	0.6	-	2.1	63.5	1.3	32.5	100.0
Nevill Hall	2.7	4.0	31.6	20.4	1.3	40.0	100.0
Prince Charles	1.3	0.2	5.5	71.3	0.5	21.2	100.0
Prince Philip	-	-	11.5	44.1	-	44.5	100.0
Princess of Wales	0.4	-	15.8	46.3	1.1	36.4	100.0
Royal Glamorgan	-	-	2.1	77.8	0.6	19.5	100.0
Royal Gwent	1.0	0.2	23.9	43.8	0.4	30.6	100.0
Singleton	0.5	1.4	5.2	68.1	0.8	24.1	100.0
West Wales	-	0.2	5.9	48.7	0.2	45.1	100.0
Withybush	4.3	3.5	3.7	54.3	2.0	32.2	100.0
Wrexham	1.1	0.7	3.5	48.8	4.1	41.8	100.0
WALES	1.1	0.7	9.7	56.4	1.3	30.8	100.0

Figure 20: Percentage of new patients seen, by most significant procedure at first visit and colposcopy clinic



Colposcopic Opinion	Cancer	Adeno-carcinoma in-situ	CIN 3	CIN 2	CIN 1	HPV only	No CIN/ no HPV	Inadequate biopsy	Result not known	Colposcopy NAD - no biopsy taken	Total
?Invasive	16	1	16	2	1	1	4	-	9	5	55
High grade	7	13	950	485	205	82	124	15	115	35	2,031
Low grade	1	2	251	361	726	389	460	87	219	151	2,647
Inflammatory	-	3	27	37	96	102	241	36	133	150	825
Normal	-	-	2	3	4	5	18	1	9	71	113
Other	2	-	4	7	13	1	9	3	12	9	60
Not specified	1	-	22	12	14	6	21	-	19	278	373
No assessment	6	4	79	74	95	78	212	38	127	1,580	2,293
Total	33	23	1,351	981	1,154	664	1,089	180	643	2,279	8,397

Table 21b: Percentage of new patients seen, by colposcopic opinion and worst outcome of histology

Colposcopic Opinion	Cancer	Adeno-carcinoma in-situ	CIN 3	CIN 2	CIN 1	HPV only	No CIN/ no HPV	Inadequate biopsy	Result not known	Colposcopy NAD - no biopsy taken	Total
?Invasive	29.1	1.8	29.1	3.6	1.8	1.8	7.3	-	16.4	9.1	100.0
High grade	0.3	0.6	46.8	23.9	10.1	4.0	6.1	0.7	5.7	1.7	100.0
Low grade	0.0	0.1	9.5	13.6	27.4	14.7	17.4	3.3	8.3	5.7	100.0
Inflammatory	-	0.4	3.3	4.5	11.6	12.4	29.2	4.4	16.1	18.2	100.0
Normal	-	-	1.8	2.7	3.5	4.4	15.9	0.9	8.0	62.8	100.0
Other	3.3	-	6.7	11.7	21.7	1.7	15.0	5.0	20.0	15.0	100.0
Not specified	0.3	-	5.9	3.2	3.8	1.6	5.6	-	5.1	74.5	100.0
No assessment	0.3	0.2	3.4	3.2	4.1	3.4	9.2	1.7	5.5	68.9	100.0
Total	0.4	0.3	16.1	11.7	13.7	7.9	13.0	2.1	7.7	27.1	100.0

Figure 21: Percentage of new patients seen having colposcopic assessment, by colposcopic opinion and worst outcome of histology

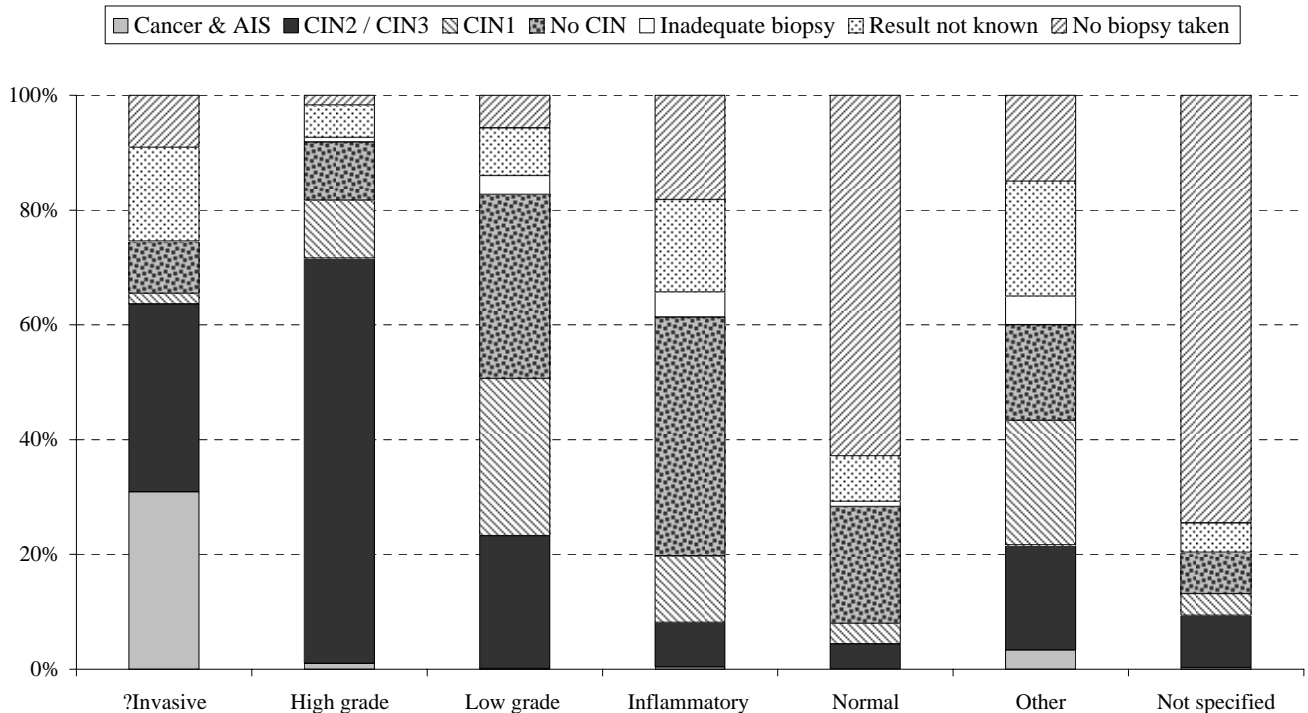


Table 22a: Number of new patients having a biopsy taken, by colposcopy clinic and worst outcome of histology

Source: KC65

Colposcopy Clinic	Cancer	Adeno-carcinoma					HPV only	No CIN/ no HPV	Inadequate biopsy	Result		Total
		in-situ	CIN 3	CIN 2	CIN 1	not known				No biopsy taken		
Brecon	-	-	14	10	12	6	-	-	-	-	10	52
Bronglais	-	-	21	8	10	71	27	23	33	33	33	226
Caerphilly	-	-	19	21	19	-	3	3	85	86	86	236
Cardiff and Vale	2	9	253	111	70	158	149	40	133	181	1,106	
Glan Clwyd	2	-	72	50	76	47	201	6	39	200	693	
Gwynedd	7	1	91	48	62	9	29	-	5	168	420	
Llandrindod Wells	1	-	3	4	4	1	11	-	6	2	32	
Neath	6	1	102	59	99	1	81	5	14	158	526	
Nevill Hall	-	-	68	43	77	58	10	7	11	178	452	
Prince Charles	2	-	90	44	88	103	41	21	102	104	595	
Prince Philip	2	1	27	16	41	21	15	10	10	84	227	
Princess of Wales	5	4	56	27	18	20	22	6	22	92	272	
Royal Glamorgan	-	1	51	58	35	24	84	16	6	58	333	
Royal Gwent	2	-	186	183	172	39	38	15	49	206	890	
Singleton	1	3	135	96	67	52	219	6	45	165	789	
West Wales	1	-	49	66	111	19	56	8	4	181	495	
Withybush	1	1	49	63	116	25	14	6	49	164	488	
Wrexham	1	2	65	74	77	10	89	8	30	209	565	
WALES	33	23	1,351	981	1,154	664	1,089	180	643	2,279	8,397	

Table 22b: Percentage of new patients having a biopsy taken, by colposcopy clinic and worst outcome of histology

Colposcopy Clinic	Cancer	Adeno-carcinoma					HPV only	No CIN/ no HPV	Inadequate biopsy	Result		Total
		in-situ	CIN 3	CIN 2	CIN 1	not known				No biopsy taken		
Brecon	-	-	26.9	19.2	23.1	11.5	-	-	-	19.2	100.0	
Bronglais	-	-	9.3	3.5	4.4	31.4	11.9	10.2	14.6	14.6	100.0	
Caerphilly	-	-	8.1	8.9	8.1	-	1.3	1.3	36.0	36.4	100.0	
Cardiff and Vale	0.2	0.8	22.9	10.0	6.3	14.3	13.5	3.6	12.0	16.4	100.0	
Glan Clwyd	0.3	-	10.4	7.2	11.0	6.8	29.0	0.9	5.6	28.9	100.0	
Gwynedd	1.7	0.2	21.7	11.4	14.8	2.1	6.9	-	1.2	40.0	100.0	
Llandrindod Wells	3.1	-	9.4	12.5	12.5	3.1	34.4	-	18.8	6.3	100.0	
Neath	1.1	0.2	19.4	11.2	18.8	0.2	15.4	1.0	2.7	30.0	100.0	
Nevill Hall	-	-	15.0	9.5	17.0	12.8	2.2	1.5	2.4	39.4	100.0	
Prince Charles	0.3	-	15.1	7.4	14.8	17.3	6.9	3.5	17.1	17.5	100.0	
Prince Philip	0.9	0.4	11.9	7.0	18.1	9.3	6.6	4.4	4.4	37.0	100.0	
Princess of Wales	1.8	1.5	20.6	9.9	6.6	7.4	8.1	2.2	8.1	33.8	100.0	
Royal Glamorgan	-	0.3	15.3	17.4	10.5	7.2	25.2	4.8	1.8	17.4	100.0	
Royal Gwent	0.2	-	20.9	20.6	19.3	4.4	4.3	1.7	5.5	23.1	100.0	
Singleton	0.1	0.4	17.1	12.2	8.5	6.6	27.8	0.8	5.7	20.9	100.0	
West Wales	0.2	-	9.9	13.3	22.4	3.8	11.3	1.6	0.8	36.6	100.0	
Withybush	0.2	0.2	10.0	12.9	23.8	5.1	2.9	1.2	10.0	33.6	100.0	
Wrexham	0.2	0.4	11.5	13.1	13.6	1.8	15.8	1.4	5.3	37.0	100.0	
WALES	0.4	0.3	16.1	11.7	13.7	7.9	13.0	2.1	7.7	27.1	100.0	

Figure 22: Percentage of new patients having a biopsy taken, by colposcopy clinic and worst outcome of histology

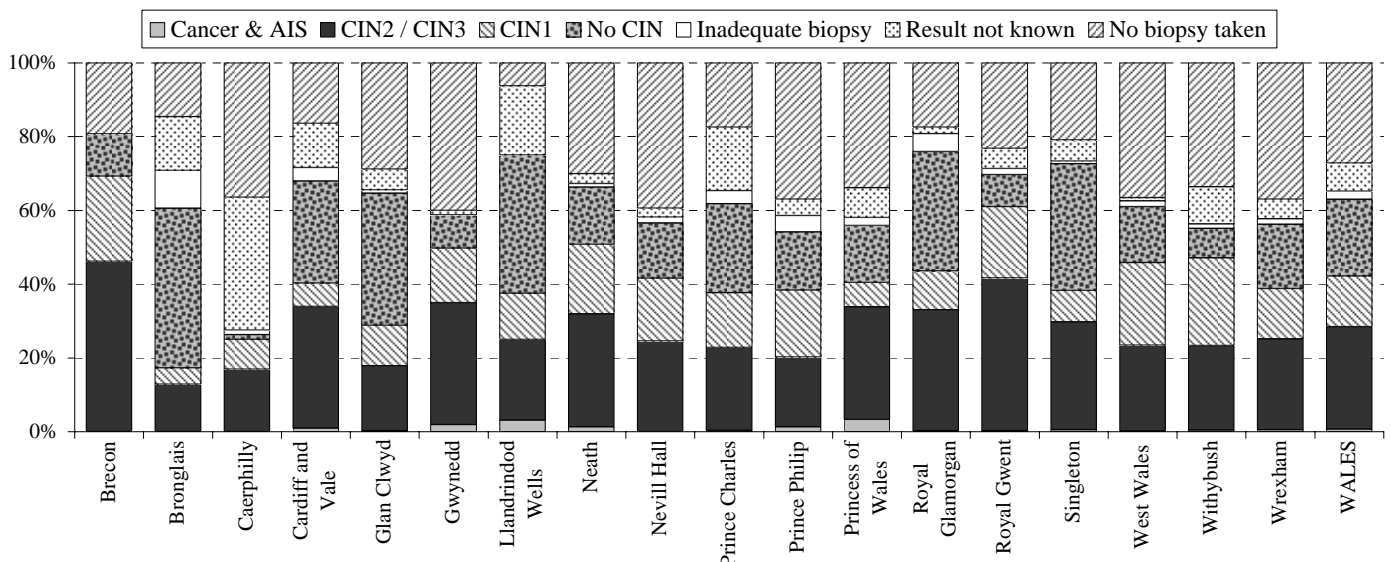


Table 23a: Number of cervical biopsies taken, by type and outcome of histology

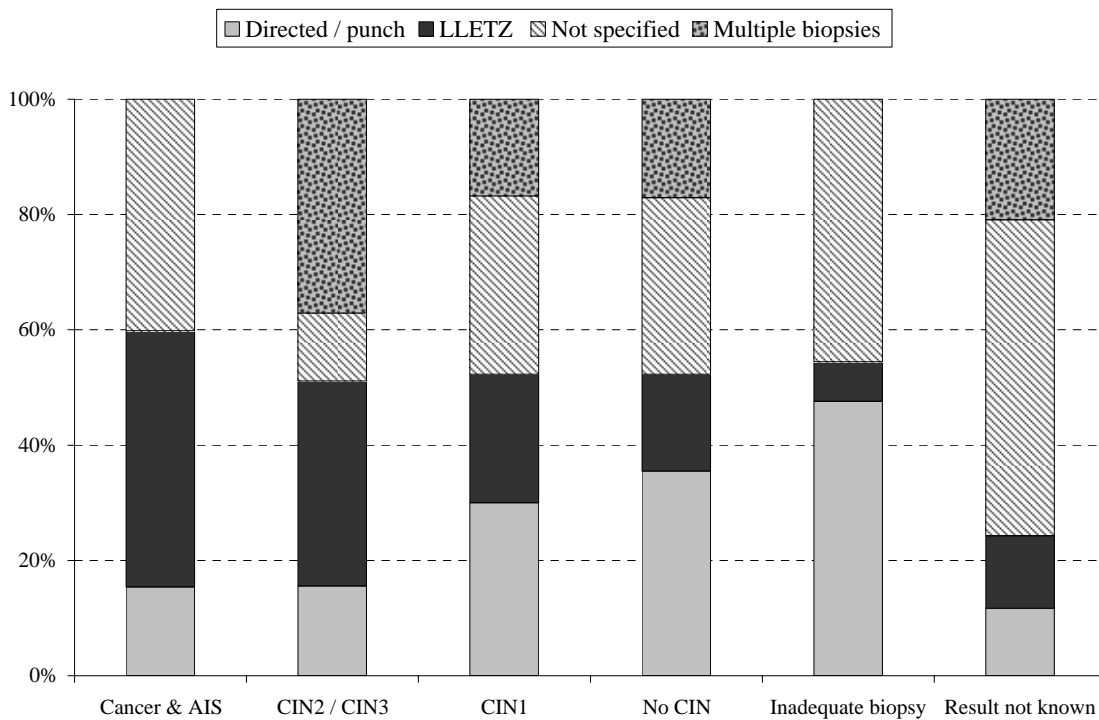
Source: KC65

Biopsy Type	Adeno-carcinoma						HPV only	No CIN/ no HPV	Inadequate biopsy	Result not known	Total
	Cancer	in-situ	CIN 3	CIN 2	CIN 1						
Not specified	1	-	13	7	21	8	33	5	15	103	
Directed / punch	15	10	760	966	1331	856	2248	341	209	6,736	
LLETZ	17	17	1137	713	465	126	564	23	106	3,168	
Multiple biopsies	-	-	10	12	4	-	8	-	2	36	
Total	33	27	1,920	1,698	1,821	990	2,853	369	332	10,043	

Table 23b: Percentage of cervical biopsies taken, by type and outcome of histology

Biopsy Type	Adeno-carcinoma						HPV only	No CIN/ no HPV	Inadequate biopsy	Result not known	Total
	Cancer	in-situ	CIN 3	CIN 2	CIN 1						
Not specified	1.0	-	12.6	6.8	20.4	7.8	32.0	4.9	14.6	100.0	
Directed / punch	0.2	0.1	11.3	14.3	19.8	12.7	33.4	5.1	3.1	100.0	
LLETZ	0.5	0.5	35.9	22.5	14.7	4.0	17.8	0.7	3.3	100.0	
Multiple biopsies	-	-	27.8	33.3	11.1	-	22.2	-	5.6	100.0	
Total	0.3	0.3	19.1	16.9	18.1	9.9	28.4	3.7	3.3	100.0	

Figure 23: Percentage of cervical biopsies taken, by type and outcome of histology

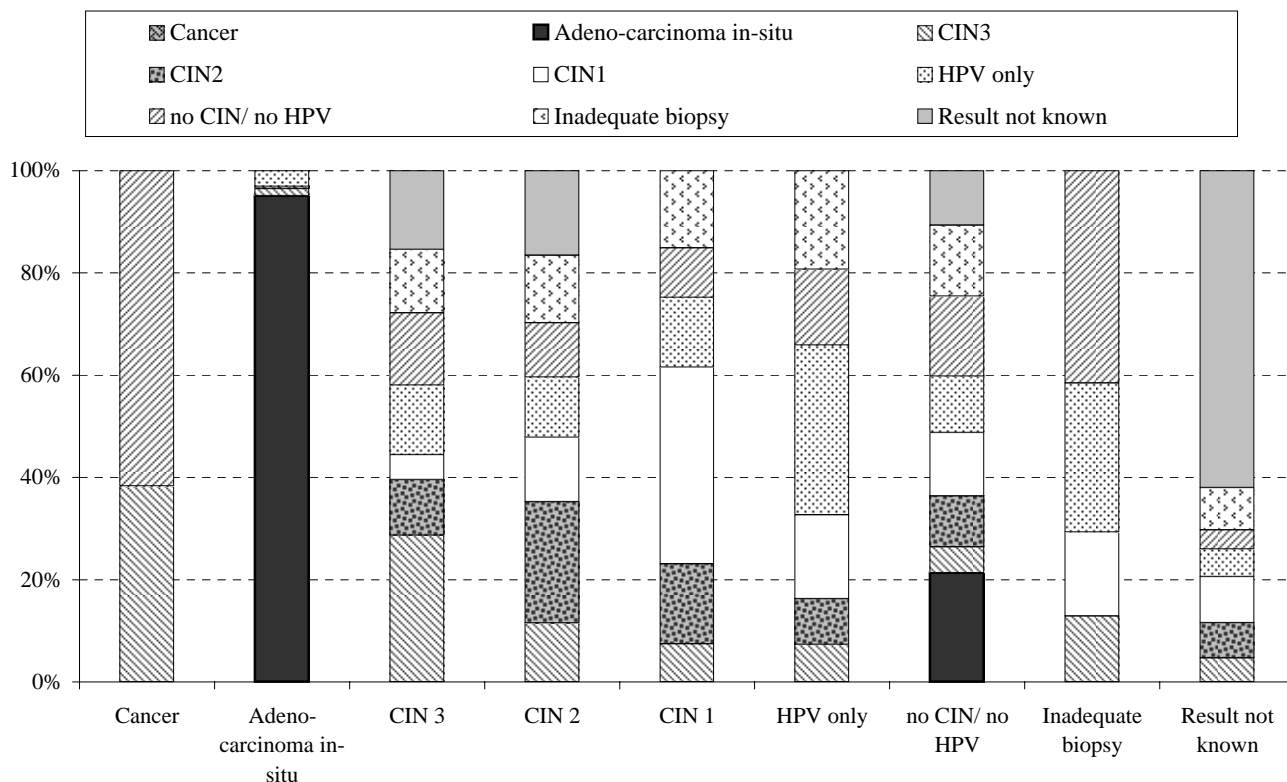


Outcome of initial punch biopsy	Cancer	Adeno-carcinoma in-situ	CIN 3	CIN 2	CIN 1	HPV only	No CIN / no HPV	Inadequate biopsy	Result not known	Total
Cancer	-	-	-	-	-	-	-	-	-	-
AIS	-	1	-	-	-	-	1	-	-	2
CIN3	3	3	244	73	26	12	50	3	6	420
CIN2	-	1	95	155	56	15	101	-	9	432
CIN1	-	-	11	21	35	7	32	1	3	110
HPV only	-	1	17	11	7	8	16	1	1	62
no CIN/no HPV	1	-	25	14	7	5	32	2	1	87
Inadequate	-	-	10	8	5	3	13	-	1	40
Unknown	-	-	5	4	-	-	4	-	3	16
Total	4	6	407	286	136	50	249	7	24	1,169

Table 24b: Correlation of outcome from an initial punch biopsy with a subsequent LLETZ (percentages)¹

Outcome of initial punch biopsy	Cancer	Adeno-carcinoma in-situ	CIN 3	CIN 2	CIN 1	HPV only	No CIN / no HPV	Inadequate biopsy	Result not known	Total
Cancer	-	-	-	-	-	-	-	-	-	0.0
AIS	-	50.0	-	-	-	-	50.0	-	-	100.0
CIN3	0.7	0.7	58.1	17.4	6.2	2.9	11.9	0.7	1.4	100.0
CIN2	-	0.2	22.0	35.9	13.0	3.5	23.4	-	2.1	100.0
CIN1	-	-	10.0	19.1	31.8	6.4	29.1	0.9	2.7	100.0
HPV only	-	1.6	27.4	17.7	11.3	12.9	25.8	1.6	1.6	100.0
no CIN/no HPV	1.1	-	28.7	16.1	8.0	5.7	36.8	2.3	1.1	100.0
Inadequate	-	-	25.0	20.0	12.5	7.5	32.5	-	2.5	100.0
Unknown	-	-	31.3	25.0	-	-	25.0	-	18.8	100.0
Total	0.3	0.5	34.8	24.5	11.6	4.3	21.3	0.6	2.1	100.0

Figure 24: Correlation of outcome from an initial punch biopsy with a subsequent LLETZ¹



¹ Where LLETZ biopsy is taken within three months of the initial punch biopsy being taken