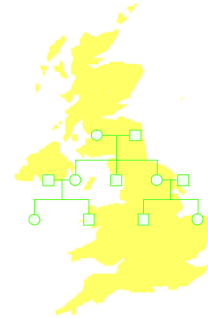


FH01 Spring News



May 2006 Issue 6



4700 Recruits

Thanks to everybody's hard work our target of 6400 recruits by December 2006 is slowly materialising, BUT it is vitally important to ensure as many recruits as possible are entered into the study during the next eight months.

Thank You



Reminders!!

FH01 collaborators meeting

The collaborators meeting is on 16th June in London. If you wish to attend, please contact Stephen Duffy Stephen.duffy@cancer.org.uk before the end of May. We will cover the meeting dinner the night before, hotel accommodation the night before and where needed, travelling expenses. More details are available from Stephen Duffy.

Consent forms

Please can you send me a copy of the consent forms of new recruits at the end of each month. Please can centres add the study number to the consent forms before sending them to me. Recruits are entered onto the NCRN Trials Portfolio accrual database when I receive a copy of the consent form and study number. Without these they cannot be entered and your hard work is not being acknowledged

Any Cancers?

Please remember to record the relevant cancer data of any cancers identified. Sue will help if needed.

2nd, 3rd, 4th, Screening round?

Some of the first recruits will be having their 4th study mammograms now. Please ensure the mammogram results are being entered onto the database. Database checks have shown many in this data. Please ask if anyone is not sure how to complete this screen.

Centres recruiting to fh01

Arden CRN	Humber & Yorkshire CRNCoast	North East london CRN	South Essex CRN	Yorkshire CRN
Coventry & Warwickshire Hospital	Scarborough Hospital	St Bartholomew's Hospital, London	Basildon Hopsital	Airedale NHS Trust
Avon CRN	Lancashire & South Cumbria CRN	North London CRN	Southend Hospital	Leeds Teaching Hospital
Bath	Burnley General Hospital	Royal Free, Hampstead, London	Surrey CRN	Scotland
Frenchay Hospital Bristol	Leicester, Northampton and Rutland	UCLH	Jarvis Screening Centre, Guildford	Aberdeen
Weston General Hospital, W-S-M	Kettering General Hospital	North West Midlands CRN	Sussex CRN	Ardmillan Breast Screening Centre
Black Country CRN	Northampton General Hospital	Shrewsbury & Telford Hospital, NHS Trust	Brighton & Sussex University Hospitals	Glasgow Royal Infirmary
New Cross Hospital, Wolverhampton	Merseyside & Cheshire CRN	Northern CRN	Worthing Hospital	Hairmyres Hospital, Lanarkshire
Central South Coast CRN	Aintree Hospitals NHS Trust	Newcastle Upon Tyne Hospital	SW London CRN	Ninewells Hospital, Dundee
Queen Alexandra Hospital, Portsmouth	Countess of Chester	Pan Birmingham	Mayday Hospital London	Stobhill Hospital, Glasgow
Basingstoke	Royal Liverpool University Hospital	Birmingham City Hospital	Royal Marsden Hospital, London	Victoria Infirmary Glasgow
Derby & Burton CRN	Southport & Ormskirk Hospital NHS Trust	Sandwell Hospital, West Bromwich	S.W. Thames Regional Genetics Service	Western Infirmary, Glasgow
Burton Hospitals	Whiston Hospital, Prescot	Peninsula CRN	Teeside, South Durham & Yorkshire CRN	Wishaw Hospital, Lanarkshire
Derby Hospitals NHS Foundation Trust	Mid Anglia CRN	Derriford Hospital, Plymouth	Darlington Memorial Hospital	Ayrshire & Arran
Greater Manchester CRN	Ipswich Hospital	Mermaid Centre, Cornwall	Stockton on Tees	Crosshouse Hospital, Kilmarnock
Hope Hospital, Salford	Mid Trent CRN	Royal Devon & Exeter	West London CRN	Wales
Leighton Hospital, Crewe	City Hospital, Nottingham	SE London CRN	Queen Mary's Hospital, Roehampton	Glan Clwyd Hospital
Macclesfield District General Hospital	West Anglia CRN	Guys Hospital, Genetics Service	Northwick Park Hospital, London	Singleton Hospital, Swansea
Trafford Healthcare Trust	Addenbrookes Hospital, Cambridge	Thames Valley	St Mary's Hospital, Paddington	University Hospital of Wales
Withington Hospital, Manchester	Hinchingbrooke Hospital	Parapet Breast Screening Centre, Windsor		Northern Ireland
		Milton Keynes		Craigavon Area Hospital Group

For more information, please contact:
Sue Thomas, Study Co-ordinator.

Information Team, Breast Test Wales, 18, Cathedral Road, Cardiff. CF11 9LJ
Phone: 02920 787877 Email: Susan.Thomas@velindre-tr.wales.nhs.uk

www.fh01.org.uk